



Put Some **SPRING**
 Into Your Collectible
 Shopping with a
 Subscription to
YESTERYEAR!

12 Monthly Issues
 for **\$22** a Year

Each month, You'll Get the Best
 Regional Listings for Upcoming
 Antique Shows, Flea Markets,
 Festivals & More
 ~ Plus Columns by Experts
 on Vintage & Collecting!

(Use this coupon or a reasonable facsimile)

YES! I want to subscribe to Yesteryear!

- Send me one year (12 issues). Enclosed is \$22
- Save a few dollars...2 years (24 issues). Enclosed is \$40

This subscription is...

NEW RENEWAL A GIFT

NAME _____

ADDRESS _____

CITY _____ STATE _____ ZIP _____

Mail to: Yesteryear Publications • PO Box 306 • Montello, WI 53949
 Please allow 4-6 weeks for delivery of first issue

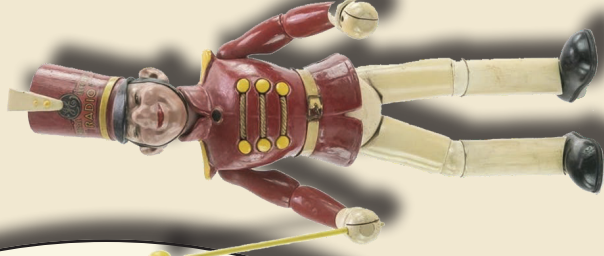
No. 599 • APRIL 2025 • \$ 1.50

YESTERYEAR!

Check
 Out Our Huge
 Monthly Calendar of
 Events!



Celebrating
 Our 50th Year
 of Promoting
 Antique &
 Collector
 Events!



**LOOK INSIDE TO FIND.....Listings for Upcoming
 ANTIQUE SHOWS, FLEA MARKETS, FESTIVALS & ART FAIRS
 Plus Columns by Collecting Experts!**



Kovels: Antiques and Collecting

By Terry & Kim Kovel



Promotional toys have been a popular form of advertising for a long time. The doll pictured here is Bandy, an advertising mascot created for General Electric in the 1920s. General Electric had many other advertising toys, including the Hotpoint doll and a circus set. Bandy promoted their radios; his name comes from the “big band” jazz music that was popular at the time, even if his colorful uniform and tall hat, which undoubtedly helped catch customers’ attention, might be a better fit for leading a marching band.

This example, complete with his baton, sold for \$504 at Donley Auction services. Bandy dolls were 18 inches tall, made of wood and composition with jointed limbs, and appeared in shop window displays with General Electric radios. They were made by the Cameo Doll Company, known for familiar figures like Kewpies, Betty Boop dolls and other advertising mascots and cartoon characters. Designer Joseph Kallus created many of their dolls. His designs for Bandy and his fellow (or perhaps rival) radio advertising mascot, RCA’s Radiotron, may have been based on work by illustrator Maxfield Parrish, who designed promotional posters and calendars for General Electric that are highly collectible today.



Bandy the bandmaster helped advertise General Electric radios starting in the 1920s. Now, vintage Bandy dolls appeal to collectors of dolls, radios and advertising. Photo Credit: Donley Auction Services

In 1936, Paolo Venini hired the company’s first freelance designer, Tyra Lundgren. She was also the first woman to design for the company. Like many modern designers, Lundgren worked in several media, including ceramics and textiles.

By the time Paolo Venini met her, she had years of experience designing glassware for major companies. She worked at the famous Moser factory in Karlsbad, known for its heavily enameled pieces and later experimental glass, in the 1920s. She was also a freelance designer for the Finnish factory Riihimäki and, in the 1930s, worked for Kosta in Sweden.

Her designs for Venini rendered forms from the natural world, like birds, fish, leaves and flowers, in the clean, abstract lines of modernism. They are some of her most enduring works. This leaf-shaped dish by Venini, which sold for \$756 at a Wright auction, was made in 1995 from a design Lundgren created in 1938.



In the 20th century, Venetian glass factories brought modern style and international influence to their products. This leaf-shaped bowl made by Venini was the work of Swedish designer Tyra Lundgren. Photo Credit: Courtesy of Wright



There’s no doubt that a vase like this one belongs to the famille verte, or “green family,” of Chinese porcelain. Spring peonies and foo dogs are popular symbols. Photo Credit: Leland Little

“Famille verte” is a term collectors use for a popular style of Chinese porcelain. If you speak French (the term was coined by French collector Albert Jacquemart in the 1860s), you know it means “green family.” It refers to a type of porcelain decorated with multicolor enamel, called wucai, or “five-color” in Chinese, where green is the dominant color. In Chinese, it is usually called Kangxi wucai because it was developed during the reign of the Kangxi emperor of the Qing dynasty, who ruled from 1661 to 1722. It experienced a resurgence in popularity in the 19th century, when it was made for export to the West.

The predominance of green enamel lends itself well to designs with leafy plants, like this 19th-century vase that sold for \$600 at an auction by Leland Little. Like many Chinese porcelains, its decorations have symbolic meanings. The plants that cover the background are peonies, which are associated with royalty and wealth. They are also the flowers of spring.

The auction house described the animals on the vase as “Buddhist lions,” after the guardian lion statues often seen outside Buddhist shrines. However, English-speaking collectors often call them “foo dogs” because of their resemblance to certain Chinese dog breeds known as “lion dogs.”

Venetian glass has been prized since the 13th century, but it has never been stuck in the past. The Venini glass factory in Murano has been at the forefront of modern design since it was founded in 1921. It also brought in talent from other parts of Europe.

Do you enjoy collecting vintage? Subscribe to YESTERYEAR!

12 Monthly Issues for \$22 a Year

Each month, You’ll Get the Best Regional Listings for Upcoming Antique Shows, Flea Markets, Festivals & More!
~ Plus Columns by Experts on Vintage & Collecting!

Use the form on the back cover to subscribe today!

Yesteryear delivers great information for vintage dealers & collectors!

Contact us for advertising opportunities now!

www.yesteryearpublications.com
email: yesteryearantiques@frontier.com
Facebook: Yesteryear Publications
or call: 608-297-7755

Find Yesteryear at Many Antique Shops, Shows & Flea Markets!

CIVIL WAR & MILITARY EXTRAVAGANZA

2025 • CHICAGOLAND • NATIONAL

SATURDAY April 26 | SATURDAY Sept. 20

9am to 4pm / \$10 • Early Buyer 8am / \$25 • Free Parking

1,000's of Civil War Treasures! Plus!

Revolutionary War • Spanish-American War
Indian Wars • Mountain Men • Bowie Knife
Collector Arms • Fur Traders • World Wars I & II

Zurko Promotions 715-526-9769
www.ChicagoCivilWarShow.com

DuPage Co. Fairgrounds
2015 W. Manchester • Wheaton, IL 60189

Q: I am downsizing and have a beautiful bowl that I would like to sell. It has pink roses in the center and a lot of gold work. On the back, it has a blue mark that looks like a leaf with letters under it. The words "Hand Painted" are next to it in cursive. Can you help me find a value for my bowl and tell how to sell it?

A: The mark on your bowl sounds like one used by Morimura, a trading company founded in Japan in 1876. One of their marks was a maple leaf with the word "Nippon" underneath and "Hand Painted" in larger letters next to it. "Nippon," the Japanese name for "Japan," was used on exports from 1891 to 1921. Nippon ceramics sell frequently at shops and auctions, but usually for low prices. Bowls usually sell for less than \$50, unless they are a very rare shape like a punch bowl. Selling your bowl at a local antiques or consignment shop may be the easiest option, but a pattern-matching service that deals in individual pieces of discontinued china, glass and silverware may get you a better price. There is also an International Nippon Collectors Club (nipponcollectorsclub.com) that may have more information or help connect you with buyers.

TIP: Repainting an antique doll's head never adds to the value.

Q: I have a picture, probably a lithograph, of a young girl done by a 14th-century artist from Italy. There is an inscription on the back of the picture: "Florentine Master / A Young Lady / About 1460 / Museum Berlin." The picture was passed down to me from my English-American grandmother, a lover of art, who traveled widely after having her seven children, one of whom was my father. She traveled alone throughout Europe and South America during the 1930s. I would love to know the picture's value, other than aesthetic.

A: Your picture is a copy of a famous portrait from the Italian Renaissance. Sometimes called "Profile Portrait of a Young Lady," it has been copied by many other artists, printed on decorative pieces like ceramic plates and reproduced as a color or black-and-white print. It appears in the reference book "The Picture History of Painting" by H.W. Janson and Dora Jane Janson, first published in 1957. The original painting was acquired by the Gemaldegalerie in Berlin in about 1898 and is still displayed there. The museum attributes it to Piero del Pollaiuolo, who was active in Florence, Italy, in the 1400s, but some historians believe it was painted by another artist, possibly Piero's brother Antonio. Your grandmother may have purchased her copy as a souvenir during her travels in Europe. The Gemaldegalerie licensed copies painted in oil on plywood in the early to mid-20th century. One sold at a European auction a few years ago for the equivalent of about \$750 in U.S. currency. Vintage prints sell for less, about \$100 to \$200.

Q: I have a pair of Queen Anne receiving chairs from 1870 to 1880. They are lady's and gent's chairs. Can you confirm that or give me the correct information for these chairs? Do they have any possible value?

A: It sounds like your chairs come from the Centennial period. About 1876, as the U.S. celebrated its centennial, furniture design experienced a revival of styles from the Colonial and Federal periods. This included Queen Anne furniture, which was popular in America from about 1720 to 1750. It is characterized by blocky shapes with the addition of a few curves; most notably cabriole legs. Chairs typically

have curved tops and a solid back splat that whose base touches the seat. Some Centennial furniture pieces were exact copies of Colonial or Federal furniture, some of which were convincing enough to fool museums, but many are clearly made with 19th-century sensibilities in mind.

Lady's and gent's chairs were creations of the 19th century. A lady's chair is slightly smaller, lower and has low or no arms. The back is sometimes sloped. This accommodated 19th-century women's dress. Today, pairs of lady's and gent's chairs typically sell for low prices; about \$150 to \$250. If you can identify your chairs' maker, their value will be higher.

Q: My brass spyglass has been in my family for years, and I was wondering if there was anything you might be able to tell me about it. If there is a way you might tell me what it would be worth, I would appreciate it. There is a small dent on the end cap.

A: Brass spyglasses were made throughout the 19th century and used for surveying, for nautical purposes and by hobbyists. Most follow similar designs, with three or four draws and a wood or leather grip. Some are marked with the maker's name on the end cap or eyepiece. It is extremely difficult to identify the maker of an unmarked spyglass. There were many makers throughout England, France and the U.S. Brass spyglasses sell for about \$150 to \$300 at auctions.

The dent on yours will probably not affect the value unless it affects its function. Large, conspicuous dents on the body or damage that keeps the spyglass from working would lower its value. Most antique spyglasses and telescopes show signs of wear and age. In fact, pristine condition is considered a sign of a modern reproduction. There are fakes on the market, and forgers may deliberately damage a reproduction, add a fake patina or add a maker's name, sometimes for a nonexistent maker.

For more information, you may want to contact a collector's club like the Antique Telescope Society (antiquetelescopesociety.org) or a science museum in your area. Your library may have books on the history of telescopes or collecting scientific instruments.

TIP: Remove stains from old ceramic vases by scrubbing them with salt.

Q: We have a chest sent to us after WWII that looks like it was made in Japan. It is rectangular with a flat top, landscape design on the lid and front, and bracket feet. Could you identify it and tell us its worth? It is 18 inches high, 17 inches wide, 35 inches long.

A: Many countries in East Asia made furniture to export to the United States in the mid-20th century. These included chests like the ones you describe. The chest's material may provide clues to its origin. Chests from Japan are often decorated with designs painted on lacquer or with applied metal plaques. Chests with carved designs, often made of camphor wood, were a

popular export from China and Hong Kong. Today, most mid-century exported chests like these are worth about \$50 to \$100.

TIP: Look through the wrong end of a telescope you plan to buy. If it can be focused, all the parts are there.

Q: I have a Singer treadle sewing machine and would like to know what you thought it would be worth if sold. I can't find any dates on it, but it has an oval brass with the trademark that reads "The Singer Mfg. Co N.Y." It needs a belt to use it and it has sewing accessories.

A: Isaac Singer (1811-1875) was an American inventor who developed and brought into general use the first practical domestic sewing machine. While working in a Boston machine shop in 1851, Singer was asked to repair a Lerow and Blodgett sewing machine; 11 days later, he had designed and built an improved model, which he patented and sold through I.M. Singer & Company.

The Singer machine was the first to embody features allowing continuous and curved stitching. His revolutionary sewing machine employed an overhanging arm holding the needle bar over a horizontal table, thus making it possible to sew on any part of the work. So impressive was Singer's design that its basic design features have been followed in almost all subsequent machines. Up to the 1950s, Singer sewing machines were by far the most popular in the United States.

The company started using a brass trademark badge like the one you describe in 1875. After 1885, the badge no longer had "N.Y." on it. Currently, treadle sewing machines sell for about \$100 or less.

For more information about yours, look for books like "The Encyclopedia of Early American Sewing Machines" by Carter Bays or "Antique Sewing Machines" by Brian Jewell. The International Sewing Machine Collectors' Society (ismacs.net) also has more information about identifying, collecting and evaluating antique sewing machines. Whatever you decide to do with your Singer sewing machine, know that you have a significant piece of history in your home.

Register on Kovels.com to access subscriber content for FREE! Learn from our expert answers to readers' questions about marks, values and identification. Find auction houses, collectors' clubs, museums, repair services, and more in our Business Directory. Discuss antiques and collectibles with other collectors on our forums. Find events on our Event Calendar. Stay up to date with our latest news. And sign up on Kovels.com to receive our free weekly email full of information about antiques and collectibles. Look for it every Wednesday.

Uff da!

Sorted and Unsorted
- Many 100+ Years Old!
States - Topics - International
Quantity Discounts up to 30%

66,523 Postcards - All at \$1 each!

See Them at a New Location:
River District Antique Mall
420 Winton St. - Wausau, WI 54403
Open 4 Days a Week
Wed-Fri 10-5; Sat 10-3

Uffdahhh LLC
www.uffdahhh.com
uffdahhh@aol.com

Promote your business or event in

Yesteryear!

Yesteryear has served the antiques & collecting communities since 1975!

In addition to our subscribers, we distribute Yesteryear at many **Antique shops, Flea Markets and Collector Shows** in Wisconsin & surrounding states.

Visit our website for advertising info:
www.yesteryearpublications.com

On Facebook: **Yesteryear Publications**
Email: yesteryearantiques@frontier.com

We look forward to helping you promote your business!

GRAYSLAKE ANTIQUE & VINTAGE MARKET™

Market Schedule:
April 12 & 13, 2025 • Oct. 11 & 12, 2025
Nov. 8 & 9, 2025 • Dec. 13 & 14, 2025

Sat. 9-4 & Sun. 9-3 / \$8. Free Parking
LAKE COUNTY FAIRGROUNDS
1060 E. Peterson Rd., Grayslake, IL

**Antiques • Collectibles • Jewelry
Furniture • Vintage & More!**
NEW DEALERS WELCOME!
CALL 715-526-9769 FOR INFO.

WWW.ZURKOPROMOTIONS.COM





Kovels: Antiques and Collecting

By Terry & Kim Kovel



Q: I have a small vase from my grandmother. It is brown with flowers and reads "Louwelsa Weller" on the bottom, but I have never seen one like it. Can you tell me about it and an average resale value, please?

A: In the early 20th century, Weller Pottery was the largest art pottery in the world. Its pieces are still popular among art pottery collectors. Weller opened in 1872 in Fultonham, Ohio, moved to Zanesville, Ohio, in 1882 and began making artware in 1893. It closed in 1948. Louwelsa, introduced in 1896, was one of its first art pottery lines. It has a glossy glaze over a shaded background. Flowers are a common decoration, but some Louwelsa pieces are decorated with portraits or pictures of animals or fruit. The style of the mark can help you estimate the age of your vase. The earliest Weller marks look handwritten. A stamped mark with the name of the pottery line (in your case, Louwelsa) in a half circle over the word "Weller" was used from about 1896 to 1910. A full circle mark was used after 1910. Small Weller Louwelsa vases generally sell for about \$50 to \$100. Yours may sell for more if it is an especially rare shape or if it has an artist's signature.

TIPS on framing paper documents and prints:
 No glue, transparent tape, or rubber cement. No scissors -- don't trim anything. No pencils or pens, and don't try to rewrite an autograph. No staples or clips. No extremes of temperature or humidity. No direct sunlight -- it fades the ink.

Q: I am curious about the bronze sculpture my father purchased from an estate sale around 1950. He converted the sculpture into a lamp. The sculpture shows a woman in a draped gown with one hand raised and the other arm outstretched. It is 27 inches high and weighs 26 pounds. I did not find any markings or signatures. Where was it made, when was it made, who was the artist and is there any value?

A: Bronze sculptures like yours were a common decoration in the late nineteenth to early twentieth centuries. They were often made in the art nouveau style of the time. The most famous were made in France, but some were made in other European countries and the U.S. as well. They were often copies of sculptures by famous artists. Many were made into lamp bases, like yours. Unmarked bronze sculptures or lamp bases usually sell for about \$200. We have not been able to identify its maker, but a book like "The Encyclopedia of Bronzes, Sculptors & Founders" by Harold Berman may help. A library or museum in your area may have a copy.

Q: I would like more information on a Harker semi-porcelain pitcher that I inherited. It has a bird pattern and a bow and arrow mark.

A: Harker Pottery Company was incorporated in East Liverpool, Ohio, in 1890. Initially, the pottery made brown glazed pottery and yellowware using local clay. They were making semi-porcelain by about 1890, which is also when they started using the bow and arrow mark. The mark included the word "Semi-porcelain" until about 1920. Harker stopped production in 1972. The company made many popular dinnerware patterns. For more information, look for the book *The Collector's Guide to Harker Pottery: Identification and Values* by Neva Colbert (Collector Books, Paducah Kentucky, 1993).



Nautical antiques are popular decorations. Their appeal has many aspects: a call back to another time; a sense of seafaring adventure; even the durability and practicality of something made to survive the high seas. This pair of copper anchor lights from the early 20th century sold for \$384 at an auction by Eldred's.

Anchor lights, an important safety feature, were made to hang from the top of the highest mast, casting light when the ship was at anchor. Like most models, the lamps shown here have Fresnel lenses, invented in 1822 as a lightweight, efficient way to increase the distance and visibility of the beam cast by a lighthouse.

Many companies manufactured anchor lights, but some, like these, are only marked with the word "Anchor." Lamps like these are still made today and still made to burn oil or kerosene. Ships carry them in case they lose electricity. The pair pictured here, however, are electrified and mounted to wooden bases. With their seafaring careers long over, they make an attractive and useful pair of table lamps.

Q: I would like to know the price of some old wooden toys. I have a box of alphabet blocks and a box of Lincoln Logs.

A: Alphabet blocks with carved, molded or painted letters sell for about \$15 to \$30. Wooden blocks with lithographed paper designs sell for higher prices, especially if they are in their original boxes. Vintage Lincoln Logs sell for similar prices. Like most toys, they are worth more with the original packaging. If you have the packaging for your Lincoln Logs, it may help you determine how old they are.

Alphabet blocks and Lincoln Logs are not only classic construction toys; they both have connections to a famous family of architects. According to the Strong National Museum of Play in New York,

which inducted alphabet blocks into its Toy Hall of Fame in 2003,

Frank Lloyd Wright claimed that playing with blocks as a child was what sparked his interest in architecture. His son John, also an architect, invented Lincoln Logs in 1916 and trademarked the name in 1923. He was inspired by the earthquake-resistant construction used in the Imperial Hotel in Tokyo, Japan, which his father had designed.

Initially, Lincoln Logs were made by John Lloyd Wright's company, the Red Square Toy Company, and sold through the Montgomery Ward catalog. Playskool bought the company in 1943. The rights to Lincoln Logs went to Milton Bradley in 1968 and Hasbro in 1984. Some sets of plastic logs were made in the 1970s and 1980s, but, other than that, they are always wood.

Q: I have an Edison Disc Phonograph made by Thomas A. Edison, Inc. I can't find any dates on it but it comes with those heavy, thick records. It needs the cloth for the front where the sound comes out. I would like to know what you think these are worth.

A: Thomas A. Edison, Inc., started selling disc phonographs in 1912. By then, disc records had become much more popular than cylinders. Edison's early disc records and the phonographs that played them are called Diamond Disc because the phonographs had a hard diamond stylus instead of the steel needle used in most record players.

Edison Diamond Disc records are 10 inches across and 1/4 inch thick, making them much thicker and heavier than other records. They can only be played on Edison Diamond Disc phonographs, and the phonographs are not compatible with other types of records. Edison made disc phonographs and records until 1929.

You can estimate the date of your records by their labels. The earliest Edison discs had the company logo, song title and composer's name pressed into the disc. The artist's name was added starting in 1915. The company started using black paper labels in 1921. They changed to white labels in 1923. However, to most collectors, the rarity of a recording is more important than the date of a record.

Groups of Edison Disc records sell for about \$20 to \$50. Individual records can be worth anywhere from about \$5 to over \$150. For more information, look for books like "The Collector's Guide to Edison Records" by George Copeland and Michael Sherman. Early Edison disc phonographs are worth about \$150 to \$300, depending on their condition. A collector's club like the Antique Phonograph Society (antique-phono.org) may have more information.

Kovels answers readers' questions sent to the column. Send a letter with one question describing the size, material (glass, pottery) and what you know about the item. Include only two pictures, the object and a closeup of any marks or damage. Be sure your name and return address are included. By sending a question, you give full permission for use in any Kovel product. Names, addresses or email addresses will not be published. We do not guarantee the return of photographs, but if a stamped envelope is included, we will try. Questions that are answered will appear in Kovels Publications. Write to Kovels, Yesteryear, King Features Syndicate, 628 Virginia Dr., Orlando, FL 32803 or email us at collectorsgallery@kovels.com.



18,000 SF! More than 120 DEALERS!

Just 1/4 mile E. of Hwy. 51 in the Rolling Meadows Shopping Center
 4748 Cottage Grove Rd., MADISON, WI 53716
 ••• 608-222-2049 •••

Open: Mon-Tues-Wed & Fri 10-6 • Thurs 10-8 • Sat 10-5 • Sun 11-5

BUSES & TOURS WELCOME!

Visit our website to see a sampling of items for sale!

www.antiquesmadison.com

Celebrating Over
40 Years
In Business!
Madison's Oldest!!

QUALITY • INTEGRITY • SERVICE • APPRAISE • BROKER



Janet's Antiques

ACGA, NADA

608-238-3300

Open Mon.-Sat. 11-7

3800 University Ave.
 Madison, WI

MIDVALE UNIVERSITY
 HWY. 12 & 18

BUY & SELL • MADISON'S OLDEST ANTIQUE SHOP

TOMAH ANTIQUE MALL



Dealer Space Available

Booth or Case
 Call for Details

www.tomahantiquemall.com

1510 Eaton Ave.
 I-94 & Hwy. 21-East
 Tomah, WI 54660
 1-888-757-0044

Jewelry, Coins, Furniture, Paper, Primitives, Tools, Linens, Crocks, Glassware, Die Cast, Collectibles, And More...

Open 7 Days A Week!
Stop in and See Us!

Common Sense Antiques

• **Antique & Collectible Furniture** •
By Fred Taylor



The headboard post of the walnut bed has a trefoil on the top, an element of the Gothic Revival style of the 19th century. The footboard of the bed has rounded corners of the type most often seen in Rococo Revival furniture of mid century but also in Renaissance Revival of the later part of the century.

Q. Hi Fred - I was wondering if you could tell me anything about our bed. I think it may be a country bed that I've heard you talk about. My mom had it for some time but we don't have any idea on its age or if it is even worth \$100. We did have a 3/4 custom bed made for it at a cost of \$500 but with a new baby on the way we can't decide if we should keep it or try and recoup the cost of the mattress. Thanks, Chris

A. Chris - Your interesting bed is made of walnut. It shows elements of two distinct 19th century revival styles. The rounded corners on the footboard and the acorn cluster on the headboard speak to the Renaissance Revival style of mid to late 19th century. The headboard posts however have a trefoil element on the top which is a Gothic Revival element. Gothic Revival was made in this country beginning around 1825 and was popular off and on again for the better part of the century, peaking around 1865.

The bed does appear to be of less formal construction than that seen in major metropolitan areas so it could be a country made bed. The key to the age of the bed will be found in the hardware used to attach the siderails to the head and foot boards. A bolt concealed in the side rail that attaches to an implanted nut in the

posts is probably from the mid century and slightly later. A single cast iron cleat that fits into a metal sleeve is slightly later and two smaller cast iron cleats that fit into a double slotted sleeve likely means 1870+. One or two flat steel hooks that engage pins means much later toward the end of the century or even after the turn of the 20th century. All of this is illustrated and explained in my book "HOW TO BE A FURNITURE DETECTIVE". If you send me photos of the hardware I will identify it for you.

You should easily be able to recoup the cost of the mattress if you decide to sell but you probably will never have the chance to buy a bed just like that again. Thanks for writing and thanks for the photos.

Q. I am looking for information on the company and history of a piece we just inherited. The label says "Manufactured by R.E. Lasher & Co, St Louis, MO. April 1882 Patent Portable Dovetail se (unreadable)." There is also written in crayon or marker, "JES Brazil IND." I assume this may be the dealer that sold it. From the inside it looks like walnut to me, but the outside is a more bleached out color, more like perhaps cypress. I believe it has been refinished and we are considering doing it again (properly).

My mother-in-law recently passed away and we inherited the piece. She tells the story that in the 60's a trucking company delivered this to her door. She did not order it. She thought perhaps a relative sent it to her, but no one admitted to it. She tried to track it through the trucking company but they said there was no return address or information so we have no idea where it came from or any history on it. Any information you can provide would be welcomed. Thanks, Pete R.

A. Pete - Your armoire is made in the Eastlake style of the 1880s, a very widespread factory made style. The wood is definitely walnut that has been severely bleached. That was a fad several decades ago and the results are unmistakable. The piece can be refinished back to the right warm walnut color. Since the original finish has already been disturbed you will lose nothing by having the piece restored properly. I have a feeling the label about the "portable dovetail" refers to the joinery in the drawer. They are probably the mysterious "scallop and dowel" joints that are correctly known as Knapp joints. The Knapp machinery was put into service in 1870 and was widely used in the mid West until around the turn of the century. They are significantly different from standard dovetail joints.

I couldn't find any reference material on R. E. Lasher and I also assume the Brazil, IND reference is the retail dealer. Since it is a factory made piece and has been refinished it does not have a great deal of collector's value but it is an interesting artifact of the period when houses had few or no closets and armoires such as this provided the only enclosed hanging storage space.

With many years of experience in the antique furniture restoration and identification business, Fred Taylor is a household name when it comes to the practical methods of identifying older and antique furniture using the three main categories of construction techniques, construction materials and style. Fred has authored a book on the subject, along with many syndicated columns.

 "like" us on **facebook**
Yesteryear Publications

Promote your business or event in Yesteryear!

Yesteryear has served the antiques and collecting communities since 1975! In addition to our subscribers, we distribute Yesteryear at many **Antique shops, Flea Markets and Collector Shows** in Wisconsin & surrounding states.

Visit our website for advertising info:
www.yesteryearpublications.com

On Facebook: **Yesteryear Publications**
Email: yesteryearantiques@frontier.com

We look forward to helping you promote your business!

YESTERYEAR

Contact Us At:
yesteryearantiques@frontier.com
608-297-7755
Web: antiqueswisconsin.com

Yesteryear (ISSN 1949349) is published monthly by Yesteryear Publications LLC, P.O. Box 306, Montello, WI 53949. Mail subscriptions are \$22 per year. (Sorry, credit cards not accepted.) Periodical Rate postage paid at Montello, WI, and additional mailing offices. POSTMASTER: Send address changes to: Yesteryear, P.O. Box 306, Montello, WI 53949. (UPS/Ground Shipping Address: W3618 County Rd. K, Montello, WI 53949)

Publishers.....Rich & Mary Faltz
Editor & Advertising DirectorMary Faltz

Columnists & Contributors:
Terry & Kim Kovel, Harry Rinker
Fred Taylor, Donald-Brian Johnson

—Advertising Deadline—

10th OF THE MONTH
FOR THE FOLLOWING MONTH'S ISSUE
(Some months later ads may be accepted—call first)

Entire contents Copyright©2025 by
Yesteryear Publications LLC
Nothing may be reprinted without written permission of the publisher.

 "like" us on **facebook** Visit Us On Facebook: **Yesteryear Publications**

Yesteryear Publication Schedule

Cover Date:	Mailed On:
APRIL 2025	MAR 21
MAY 2025	APR 18
JUNE 2025	MAY 23
JULY 2025	JUNE 20
AUGUST 2025	JULY 25
SEPTEMBER 2025	AUG 22
OCTOBER 2025	SEPT 19
NOVEMBER 2025	OCT 24
DECEMBER 2025	Nov 21
JANUARY 2026	DEC 19
FEBRUARY 2026	JAN 23
MARCH 2026	FEB 20

Yesteryear is published monthly. The 10th OF THE MONTH prior to cover date is the deadline for ALL ADVERTISING. At times we may be able to make exceptions —Call for confirmation.

Proof Ads must reach us one week prior to deadline. PUBLICATION SCHEDULE SUBJECT TO CHANGE.

Phone: 608-297-7755
Email: yesteryearantiques@frontier.com
We're on Facebook: **Yesteryear Publications**



Kovels: Antiques and Collecting

By Terry & Kim Kovel



CURRENT PRICES

Current prices are recorded from antiques shows, flea markets, sales and auctions throughout the United States. Prices vary in different locations because of local economic conditions.

Consolidated, vase, chickadees, blue, on branch, brown and green leaves, custard glass, satin finish, shoulders, four-sided, square base, 6 1/2 inches, \$50.

Glass-Venetian, bowl, short foot, red to amber, mottled, matte finish, signed, Gino Cenedese, Murano, 5 x 8 1/2 inches, \$130.

World's Fair, banner, 1876, Philadelphia International Exhibition, Centennial, George Washington portrait, multicolor, jacquard, blue fringe, silk, 10 1/2 x 7 inches, \$160.

Bradley & Hubbard, lamp, paneled shade, pierced stylized flowers, caramel slag glass, marked, 25 x 20 1/2 inches, \$200.

Sevres, box, jewelry, dome lid, bud finial, round, blue enamel, allover tonal pattern, gilt fleurs-de-lis, bronze mounted base, four-footed, mark, c. 1780, 7 inches, \$320.

Doll, Madame Alexander, Cissy, hard plastic head, dark blonde wig, blue sleep eyes, plastic body, jointed vinyl arms, pink flowered hat, black wool suit, 1957, 60 inches, \$390.

Trunk, nagamochi, lift lid, lacquer, gilt armorial devices, scrolling leaves, latch closure, handle, paper lining, Japan, late 1800s, 14 x 29 x 17 inches, pair, \$500.

Rug, soumak, six medallions, blue field, red, orange, brown, ivory, stylized flower border, Uzbekistan, 9 feet 6 inches x 5 feet 7 inches, \$745.

Pewabic, vase, blue and gold iridescent glaze, shoulders, slightly flared lip, tapered base, 7 3/4 inches, \$1,185.

Railroad, poster, London & Northeastern Railway, family on beach, "An East Coast Tonic," canvas mount, frame, England, 43 x 53 inches, \$1,720.

Clothing, bodice, Edwardian, needle lace collar, frilly trim, French knot embroidery, trapunto, bracelet length sleeves, button back, cotton, 1905, 18 inches, \$110.

Toy, car, racer, King Roadster, multicolor, red, yellow, green, driver, blue wheels, spare wheel on back, tin lithograph, windup, Marx, 9 inches, \$185.

Auto, sign, Texaco, Fire-Chief Gasoline, fire-fighter's helmet graphic, red & black lettering, enamel, dated, 1953, 18 x 12 inches, \$190.

TIP: When rewiring an old lamp, put a dimmer on the cord to turn the lamp on and off. This will protect the original switch and pull chains.

Furniture, table, Adirondack, folk art, painted, rectangular top, multicolor flower vase, black ground, dots, three legs, stretcher base, 23 x 20 inches, \$215.

Wedgwood, cup and saucer, coffee, jasperware, green, white garlands, purple oval plaques, Neoclassical style, mid-1800s, cup 2 3/4 inches, saucer 5 1/4 inches, \$320.

Furniture, chest, hinged lid, twig decorated, robin's egg blue paint, applied stars and crescent moons, shaped bracket base, 20th century, 23 1/2 x 33 1/2 inches, \$450.

Vase, Lalique, Tournai, leafy arched panels, frosted, cut to clear, shoulders, tapered base, R. Lalique, 5 inches, \$500.

Cloisonne, vase, flowering trees, perching birds, multicolor, midnight blue ground, marked, Japan, late 18th century, 12 inches, \$1,050.

Glass-Venetian, lamp, electric, figural, fruit basket, multicolor, turquoise blue base, paper label, Murano, c. 1980, 8 1/2 x 9 inches, pair, \$2,065.

Railroad, oil can, Great Northern, cone top, pouring spout, top bail handle, square side handle, marked, the Johnson Mfg. Co., 9 x 8 inches, \$50.

Meissen, figurine, bird, lark, crested, perching, grasses, round base, Blanc de Chine, crossed swords mark, 19th century, 6 x 4 inches, \$65.

Toy, airplane, yellow, pilot figure, felt helmet and jacket, propeller front, wheels, friction, flywheel, Schuco, Germany, 3 x 4 1/2 x 4 inches, \$95.

Furniture, cabinet, oak, two short drawers over panel door, molded bracket feet, Germany, 1800s, 40 inches, \$125.

Poster, advertising, Les Capitales du Monde, book series, center art nouveau figure, Librairie Hachette, frame, Eugene Grasset, France, c. 1892 50 x 33 inches, \$390.

Pewter, tea set, teapot, coffeepot, sugar and creamer, pitcher, angular wood handles, round tray, handles, wood inset, marked, Royal Holland, six pieces, \$865.

Lamp, electric, slag glass, cone shade, panels, caramel slag, metal overlay, pierced flowers, cherubs, blue panels around base, Northwest Aluminum Specialty Co., 23 x 19 1/2 inches, \$875.

Pewabic, vase, blue and gold iridescent glaze, shoulders, slightly flared lip, tapered base, 7 3/4 inches, \$1,185.

Rug, qum, allover leafy vines, trees, beige field, stylized flower border, Persian, 11 feet 7 inches x 6 feet 6 inches, \$1,410.

Tiffany silver, demitasse spoons, Audubon pattern, 4 inches, eight pieces, \$660.

Disneyana, cookie jar, Donald Duck, bust, hat as lid, head on hand, Treasure Craft, box, 11 1/2 inches, \$25.

Shaving mug, occupational, woodworker, in shop, multicolor scene, gilt lettering, marked, T&V Limoges, 3 1/2 inches, \$60.

Pottery-midcentury, bowl, asymmetrical, scroll handle, black spiral, yellow spots, footed, marked, Ruscha Ceramic, 7 x 13 1/2 x 11 inches, \$85.

Rug, needlework, Aubusson style, large center oval medallion, leafy scrolled spandrels, bellflower vine border, Lacey Champion, 20th century, 11 feet 10 inches x 15 feet 6 inches, \$160.

Lamp, electric, banker's, green shade, cased glass, metal base, fluted column, ridged dome foot, scalloped edge, c. 1920, 7 1/2 x 11 inches, \$175.

Furniture, daybed, G. Nelson, birch, upholstered cushion, two pillows, springs, tapered legs, metal tag, Herman Miller, 16 x 74 inches, \$625.

Longwy, vase, bottle shape, red ground, dense multicolor flowers and leaves, slightly flared neck, cobalt blue elephant's head handles, metal top and base, marked, c. 1900, 12 inches, \$690.

Clock, Gubelin, silver, guilloche enamel, garland, oval dial, rectangular case, marked, Swiss, 2 3/4 x 2 inches, \$960.

Railroad, poster, London & Northeastern Railway, family on beach, "An East Coast Tonic," canvas mount, frame, England, 43 x 53 inches, \$1,720.

Furniture, buffet, A. Ungentum, art nouveau, mahogany, two tiers, four upper doors, glass panels, marble top, two lower doors, carved trim, c. 1905, 75 x 76 inches, \$1,835.

Advertising, cabinet, Dr. B.J. Kendall's, patent medicines, veterinary, wood, glass door, two interior shelves, 38 x 18 inches, \$1,030.

Furniture, chest, painted, blanket, painted, sailor on shore, mermaids, on stand, green paint, door, shaped base, signed, Martha Cahoon, 13 1/2 x 29 1/2 x 18 inches, \$1,455.

Teddy bear, Shuco, panda, mohair, black and white, yes/no, glass eyes, stitched nose, 13 inches, \$595.

FOX CITIES ANTIQUE GUIDE

With over 150 Vendors in one well-lit single story building, you can spend hours grooving to the great music and walking down memory lane.

Layaway & Shipping options available

Major Credit Cards accepted

Snacks

Clean Restrooms

MEMORIES **ANTIQUE MALL** **THE AUCTION HOUSE**
POP CULTURE • VINTAGE • COLLECTIBLES
LITTLE CHUTE, WISCONSIN
400 Randolph Drive • Appleton, WI 54913
920-788-5553

Open Daily 10 - 6
Call for Holiday Hours

Follow us on Social Media!

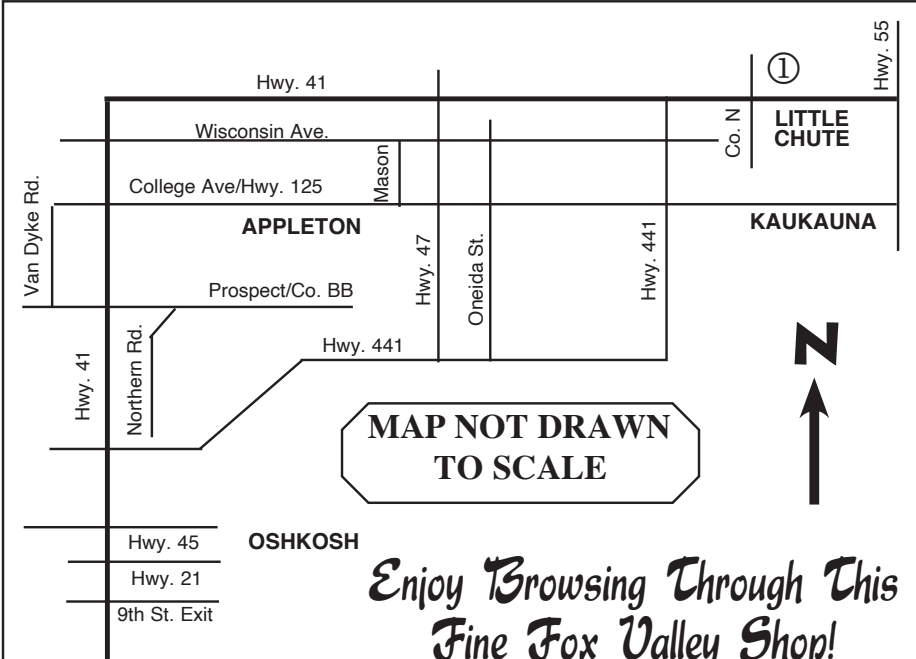
Celebrating 30 Years
1994-2024

4000 sq ft Auction House Available for Rental

Two Professional In-House Auctioneers

Occasional and Seasonal LIVE and ONLINE Auctions

See Facebook for Upcoming Events



Enjoy Browsing Through This Fine Fox Valley Shop!





Rinker On Collectibles

BY HARRY L. RINKER

London Bridge Is Falling Down

(This column was released in January 2016)

When "Rinker on Collectibles" first appeared in 1987, its focus was the emerging twentieth century collectibles market. Twenty-nine years later, the twentieth century collectibles secondary market has achieved a level of equality with the secondary market for antiques. In fact, many of the collectible categories about which I wrote in the last half of the 1980s and the 1990s have evolved and become viable members of the antiques community.

With the arrival of the 21st century, I shifted the "Rinker on Collectibles" focus to objects made after 1945. I make exceptions, especially if the object allows me to discuss collecting and/or secondary market pricing trends.

From its inception, "Rinker on Collectibles" also focused on analyzing and interpreting developments within the trade. While the focus was on developments within the collectibles sector, the column occasionally ventured into looking at what was happening to antiques.

When launching "Rinker on Collectibles," I made two basic assumptions. First, the antiques and collectibles secondary markets were separate entities. This is no longer true. In 2016, the collecting, economic, societal, and other trends that impact one also impact the other.

Second, the high-end objects, whether antiques or masterpiece and upper echelon collectibles, were relatively safe from the shifting market trends of the middle and lower portions of a collecting category's secondary market. As the 21st century dawned, some antiques and collectibles market analysts questioned the concept of "blue chip" antiques. The same applied to the top-end prices in collectibles collecting categories with an aging collector base.

As "Rinker on Collectibles" goes forward, a few of its text columns will digress and explore developments and trends in the antiques sector, especially when they mirror what is happening in the collectibles sector.

[Author's Aside #1: I was a collectible when I began "Rinker on Collectibles." I turn 75 in 2016. Like it or not, I am an antique. I make this point not to imply there is anything wrong with being an antique, albeit some may disagree. My defense, not that one is needed, is that I remain a Twentysomething is a Seventysomething body.]

Dick Wise, a participant in the Institute for the Study of Antiques and Collectibles 2015 Summer Camp, called my attention to an article that appeared in the December 19, 2015 issue of the magazine "The Economist." The article was entitled "The future of the Past / Out with the old / Why the bottom has dropped out of the antiques market." It came after an earlier article in the May 24, 2014 "The Economist" entitled "Money for old rope / A trade falls victim to technology and changing tastes."

The 21st century's digital age has created a global marketplace. The antiques and collectibles market is part of it. Just as the American stock market is incapable of ignoring developments in Asia, the Mediter-

ranean, and around the world, the American antiques and collectibles market cannot ignore what is happening elsewhere.

The May 24, 2014 "The Economist" article begins: "For the past four decades Britons have been hooked by 'Antiques Roadshow,' a television programme in which dusty old chairs discovered in a corner of somebody's attic are occasionally revealed to be worth thousands of pounds...But while the format of the show has hardly changed over the years, the antiques market has. Technology, immigration and changing tastes mean the televised ideal of the trade is dating quickly." The article notes the number of English antiques dealers fell by close to 25 percent. American tourism is down. Asians and younger Europeans are no longer interested in English antiques.

[Author's Aside #2: The Europeans define antiques far differently than do Americans. Only recently have they reluctantly [interpret as kicking and screaming] agreed that middle to late Victorian material might, if one is willing to stretch the truth, be considered antique.]

"The Economist's" choice to revisit this topic a year and one-half later is significant. The December 19, 2015 article indicates the decline in the antiques marketplace went from bad to worse in 18 short months. Reading the article leads to the obvious conclusion that the end of an over one hundred-year-old era is close at hand.

The remainder of this column will present excerpts from the December 19, 2015 "The Economist" article. Readers will recognize many of the themes discussed in "Rinker on Collectibles" columns during the past decade. The article begins by discussing the decline of antiques shops on the Rue de Rivoli in Paris where only half a dozen antiques shops survive on a street that once housed hundreds of shops.

"Shops selling furniture that has passed the century mark – the generally accepted definition of an antique – are closing on both sides of the Atlantic. Fulham Road in London used to have so many stores selling

old wood furniture that it was known as 'the brown mile.' Today all but three have closed. Bermondsey Market and Portobello Road, two other well-known stomping grounds for antique-hunters, are suffering, too....Bonham's, Christie's and Sotheby's, three big auction houses have all cut back on antique furniture to focus on what they see now as bigger moneymakers: contemporary art, jewellery, and wine....

"High rent is one problem for antique-sellers. But the other, much bigger issue is falling demand....even lower prices have not drawn buyers back....

"For a long time antique-buyers believed that scarcity meant that value of old furniture would rise, or at least hold steady. They perhaps underestimated the capriciousness of taste....Appreciating antiques, and knowing what to buy and at what price, takes study and training that few people have...Dealers complain that time-pressed young buyers show little interest in the past....young people do not entertain as they used to...Young people do not want period rooms, no matter how much money they have, says Bunny Williams, an American interior designer....

"Baby-boomers are downsizing, while their own parents are dying and leaving them their old furniture. But their children have no interest in it. Many of those who go to antiques shows are not looking to buy, but to gauge how much their own antiques are worth....hundreds of auctions take place every month on sites such as Bidsquare, Invaluable and LiveAuctioneers, and you do not need to be a professional to take part....It can be harder for customers to spot true quality online—and fraudsters find it easier to flourish. But buyers who take care should be able to find tremendous bargains..."

It would be easy to take an "I heard it all before" or "this is nothing new" approach and dismiss the above. But, this is new information. It offers indisputable evidence that all is not well in many sectors of the high-end antiques market. It is a subject that will encourage other publications to investigate. "On the way down" stories sell. The media sets and encourages trends. If similar articles appear in other leading publications, their sheer number will result in the "decline of the antiques market" story becoming a self-fulfilling prophecy.

In the December 20, 2015 email that I received from Dick Wise calling my attention to "The Economist" article, he raised this question: "When retrenchment occurs, is it a top down process (higher levels to lower levels), a bottom up process (lower grade establishments and merchandise first, trickling up to the top), or a two-stage process – trickle down from the top but accelerating as it moves down and then rebounding upward intensifying in strength? " Look for my answer in a future "Rinker on Collectibles" column.

Readers wishing to read the full text of the December 19, 2015 "The Economist" article, see:

<http://www.economist.com/news/christmas-specials/21683982-why-bottom-has-dropped-out-antiques-market-out-old>



**ANTIQUE CENTER OF
LACROSSE**
Featuring a Full Line of Antiques & Collectibles!
75 BOOTHS ON 3 FLOORS!
110 S. 3rd St. - Downtown LaCrosse, WI
Open Mon-Sat 9-5:30 • Sun 11-5:30
608-782-6533 www.anticquecenteroflacrosse.com

60+ DEALERS
Open Daily 10 to 5
Dark on Holidays
920-887-1116
142 Front St.
(Bus. 151 & Hwy. 33)
Beaver Dam, WI
DEALER INQUIRIES ALWAYS WELCOME!
Large Variety! Books to Jewelry,
Cookie Jars to Furniture...and so Much More!
Layaway • Gift Certificates • Mastercard/Visa

VINTAGE TITLES
Buying & Selling
Automobile & Motorcycle Titles
PO Box 540
S91W27850 National Ave.
Mukwonago, WI 53149

Ralph@greenfieldgallery.net
262-363-5885

Enjoy a Day of Flea Marketing & Fun in Princeton, Wisconsin!



The Famous Princeton Flea Market

Princeton, Wisconsin

Every Saturday in the City Park • 6 am – 1 pm

50th Anniversary!! April 19 to October 11, 2025

Join the fun all season long at the Princeton Flea Market. A destination in itself, Princeton's Flea Market is the largest outdoor flea market in Central Wisconsin. Enjoy a Saturday stroll in Princeton's City Park on Hwy 23 to browse through hundreds of vendor goodies. The treasures abound every week as new vendors enter the mix, so make it your weekly stop to find that long sought after item or just to get a tasty snack at the food stand.

Admission and parking are free and there is an abundance of great things to eat. Local service groups and organizations serve snacks, sandwiches, and beverages from the historic food stand in the center of the Park. Other vendors serve a wide variety of delectable delights including egg rolls, heavenly fresh-made warm donuts, and much more. The Information Center is also housed in the food stand.

Visit their website at princetonwi.com or see their Facebook page at Princeton WI Chamber of Commerce for more information for both shoppers and vendors.

About Princeton

Princeton, WI is centrally-located in Wisconsin just west of Green Lake. Its location on the Fox River and near the Mekan River makes it a destination for outdoor adventurers. Princeton is home to the largest outdoor flea market in Wisconsin and its downtown offers small town shopping with some of the finest urban flair goods in the state.



Badger Steam & Gas Spring Swap Meet, Flea Market & Auction

May 2-3-4, 2025

S3347 Sand Rd. off Hwy. 33-West, Baraboo, WI



The Badger Steam & Gas Engine Club has two large events - one in May and during their show in August!

The May Swap Meet will be May 2-3-4 on their almost 300-acre showgrounds. Set-up is on Thursday, May 1st and there will be an auction on May 3rd, starting at 10:00 am as well.

The club has over five acres of outdoor area with more than 600 vendor sites. Also an additional 40+ vendor indoor sites are in the craft building.

The Swap Meet runs 7:00 AM until 5:00 PM daily over the event.

Early vendor setup starts at 8:00 AM on the Thursday prior to the weekend.

For vendor information, contact:

Robert & Robert Mattson
E11259 Shady Lane Rd
Baraboo WI 53913
608-393-3021

Email: fleamktmgr@badgersteamandgas.com
Auction Info: Anne Beard
608-381-0630;

woodbrook5656@gmail.com

Badger Steam & Gas
PO Box 255
Baraboo, WI 53913

Mark your calendars: The annual Flea Market will be held during the club's annual Steam & Gas Show, August 17-19, 2025. This show will feature Ferguson and Ford-Fordson brands.

What Cheer Flea Market Starts Season May 1-4 Spring, Summer & Fall – A Treasure For All!

What Cheer, Iowa, is the place to be for 3 big weekends in 2025 as the What Cheer Flea Market comes to the Keokuk County Fairgrounds.

This venue with well over 400 dealers was listed as one of the 11 "Don't Miss" flea markets in the Midwest, so if you love to shop flea markets, you'll want to check it out! The fairgrounds are located at 13061 170th Street in What Cheer, Iowa.

Each flea market runs from Thursday through Sunday with various admission rates depending on the day. This year's dates are:

May 1-2-3-4

July 31, August 1-2-3

October 2-3-4-5

Hours: Thursday 8-4, Friday & Saturday 7-5;

Sunday 7-2

Thursday Admission is \$6.00

Friday & Saturday Admissions are \$4.00

Sunday: FREE!

Shoppers are welcome to bring a bag, wagon or cart for their purchases. Golf carts and some other forms of transportation are allowed for people who are physically unable to get around the grounds on their own. You are asked to go slow and be careful.

There are 4 concession stands plus the popcorn shack and funnel cake booth available for food purchases. Breakfast, lunch, and supper are all available on the grounds.

There are 3 entry gates and parking lots are located outside of each gate. You can purchase What Cheer Flea Market T-shirts, sweatshirts and hats at the Gate #1 entrance. Lost & found, along with an information booth are also at Gate #1.

Dealer information can be obtained at their website: www.whatcheerfleamarket.com or by calling Bill Ludwig at (319) 404-4066. Check out their Facebook page for other current information.



Spring Gold Rush, Rochester, Minnesota - Now In Its 53rd Year! May 9, 10, 11 - Mother's Day Weekend



Townsend Promotions Inc. is excited to bring two fabulous Gold Rush events and looks forward to seeing everyone at Graham Park, Rochester, MN, for the following dates:

May 9, 10, & 11, 2025
August 15, 16, & 17, 2025

Hours: Friday & Saturday 8 am – 6 pm;
Sunday 8 am – 2 pm

Gold Rush exhibitors will fill all three Graham Arenas: Graham 1, Graham 2, Graham 3 and the lobby. Parking will be free. A \$10 admission with proper wristband will allow attendees to go back and forth to all three arenas and lobby.

Admission with proper wristband is good all three days of Gold Rush; just show your wristband at the main lobby west entrance door or east lobby door.

No public will be allowed in the three Graham Arenas and Lobby on Thursday. Only paid exhibitors with proper wristband will be allowed.

The Spring Gold Rush returns with a bang and will be setting the stage for Spring picking! We have an outstanding lineup of dealers from around the country who will be bringing a wide and varied selection of vintage items, antiques and collectibles representing all eras of collecting. Expect to

find primitives, crocks, art glass, Tiffany, French Cameo, art pottery, Victorian glass, Depression glass, porcelains, bronzes, silver, antique lighting, lamps, clocks, advertising signs, hunting and fishing reels/fishing memorabilia, gasoline and oil memorabilia, tools, furniture, retro, mid-century modern, graniteware, tinware, quilts, linens, folk art, vintage clothing, hatpins, snuff boxes, compacts, perfume bottles, vintage toys, dolls, teddy bears, holiday items, children's dishes/children's items, kitchenware, Pyrex, fine jewelry, costume jewelry, door stops, bookends, political & historical items, ephemera, postcards, sports cards, stereo cards, tools, coins, stamps, books, American Indian, military, Civil War, farm toys, farm related items, repurposed vintage items, Scentsy, Pampered Chef, Tastefully Simple, Eclectic Cupboard, home-baked pies, cookies, bread, jams and so much more.

Bring mother to Gold Rush and make lasting memories! Come and be part of the vast treasure hunt and plan to have an enjoyable weekend at Gold Rush.

Townsendshows.com
Like and share us on Facebook.
Dealer inquires invited. Call 507-269-1473
Email: Townsendshows@gmail.com



44th Season – Elkhorn Antique & Flea Market Wisconsin's Finest Antique Market

Welcome to the Elkhorn Antique Flea Market! You've obviously got the "antique bug" just like us. In fact, that's how the Elkhorn Antique Flea Market began in 1982. A set of collectors and antique dealers saw potential in a perfect setting at the Walworth County Fairgrounds for the start of something big.

Not that you'd know it back then, when a good day was more than 50 dealers per show. Add another zero and you've got our current average of over 500 dealers!

They bring with them a wide range of merchandise from furniture in the rough to fine refinished, glassware to pottery, advertising to linens, decoys to dolls, and everything else in between. Besides seasoned show dealers, grandpa's attic might show up in the back of a truck! The pickin' is great, and so are the people.

The Elkhorn Antique Flea Market is located at the Walworth County Fairgrounds, Hwy. 11 (411 Court St.). 2025 dates are:

ELKHORN
ANTIQUE
FLEA MARKET
May 18
June 29
August 10
September 28

This event is open from 7am to 3pm on each date. Admission is \$5.00 per person. Free parking and great food on site.

So come on out for a real antiquing experience this season. No cyberspace here! Get a good look at what you want. Talk with our wonderful dealers. Ponder a decision over some great food...and go home happy!

For vendor or shopper information, see our website at elkhornantiquefleamarket.com or call (414) 525-0820.

Spring Flea Market, Antique & Collectible Show Monticello, Iowa Sunday, April 27, 2025

Make plans now to attend our annual Spring Flea Market, Antique, and Collectible Show being held on Sunday, April 27, 2025 at the Jones County Fairgrounds in Monticello, Iowa.

This is one of Iowa's largest flea markets with over 100 exhibitors (indoor and outdoor, weather permitting) selling a vast array of antiques and vintage items.

If you are a collector, antique dealer, or simply a nostalgia seeker or bargain hunter, then this is one show you do not want to miss.

There will be great food trucks on site.

The hours of the show are 8:30 AM to 3:30 PM. Admission is only \$5, with anyone 10 years and under free. Parking is also free. For buyers wanting to get an early start, early bird shoppers are welcome between the hours of 6:30 AM and 8:30 AM for an admission of \$10 per person.

The Jones County Fairgrounds is located at 766 North Maple Street, on the far northeast side of Monticello. For more information on the show, please call Waterman Promotions, LLC at 319-462-0135.



Wisconsin Rummage-O-Rama Indoor Flea Market 2025 in Waukesha, Wisconsin

Milwaukee's best indoor flea market is back! Mark your calendars for the next show! The 2025 season is underway for Wisconsin Rummage-O-Rama at the Waukesha Expo Center in Waukesha, Wisconsin.

Rummage-O-Rama, LLC is an indoor flea market in Waukesha County, held several times throughout the year. As one of the finest winter markets in Wisconsin, it is a tremendous draw for lovers of antiques, collectibles, toys, crafts, handmade jewelry, and more. Our huge variety of items ensures everyone will find something they'll love for years. Discover why people come from Wisconsin and Illinois to visit our flea market. We won't disappoint you.

Each show takes place on weekends, Saturdays from 9am-5pm and Sundays from 9am-4pm, for some one of a kind treasure hunting. You'll find some amazing vendors with tons to offer.

Over 30 Years of Experience in Flea Markets

Though we have been in business for eight years, our team has experience running flea markets from the 1980s. Over the years, we have learned how to facilitate the best event possible for our vendors and visitors. When you walk

through our doors, you will find a world teeming with possibilities and more antiques, crafts, handmade goods, collectibles, and more than you can imagine. Whether you are a vendor or a shopper, you will enjoy a unique experience designed to cater to your every need. Visit our flea market today to discover your next unique find.

Our location makes it easy for shoppers and vendors to travel from throughout Wisconsin – and even Illinois. The Waukesha County Expo Center is located 20 minutes from Milwaukee with easy access from I-94. Take I-94 exit 294 (Highway J) south to Northview Road (Highway FT) and turn right. From there, you can find the entrance to the expo. There are three large parking areas, all accessible from Northview Road.

Waukesha Expo Center is located at 1000 Northview Drive in Waukesha (Milwaukee), Wisconsin. Admission is \$5.00 per person and there's free parking at the Expo.

Upcoming dates are:

- April 12-13, 2025
- October 11-12
- November 15-16
- December 20-21

New vendors are welcome. Get more information on how to reserve a booth by calling (414) 481-5859 or visit: www.wirummageorama.com



CHICAGOLAND'S NATIONAL CIVIL WAR SHOW & SALE

DuPage County Fairgrounds

Wheaton, Illinois • Saturday, April 26, 2025

The DuPage County Fairgrounds are the site for the semi-annual MASSIVE Chicagoland CIVIL WAR & Collector Arms (CADA) Show and Sale. The DuPage, IL, Civil War Show will bring delight to the Civil War Enthusiast.

Show hours are from 9am to 4pm. General admission is \$10.00 and parking is free. Kids 16 & under are free. Early Buyer Admission: \$25.00 - 8am

Civil War dealers from throughout the United States will be offering 1000's of Civil War Treasures and Memorabilia for sale! The history of America's Great Heritage can be viewed on the 100's of tables of unique artifacts offered for sale.

In addition to CIVIL WAR ANTIQUITIES for sale, there will also be memorabilia from the Revolutionary War, the Spanish-American War, and World Wars I & II, along with Mountain Men, Bowie Knives, Collector Arms, Fur Traders and more.

A special display of CIVIL WAR cannons and artillery will also be there for viewing.

For additional information contact: Zurko's Promotions, 715-526-9769 or email at irenezurko@zurkopromotions.com or visit us online at: chicagocivilwarshow.com

Location:

DuPage County Fairgrounds
2015 W. Manchester Road
Wheaton, IL 60189



Outdoor Shawano Wisconsin Flea Market 2025 – 55th BIG Season!

The Outdoor Shawano Flea Market is a massive weekly Wisconsin flea market at the Shawano County Fairgrounds with 1,000's of treasures! Look for Antiques, Collectibles, Crafts, Vintage, Mid-Century Modern, Gardening, New & Old, Advertising, Old Toys, & More.

The Flea Market takes place every Sunday starting April 27 thru October 5, 2025, except on Labor Day Weekend when the Shawano Flea Market moves to Fairgrounds in Eagle River.

* Shawano Flea Market Fall Car Show is also Oct 5, 2025 held during the Flea Market! Car Show, Food, Music, and more!

Special Holiday Markets:

- Saturday, May 24 & Sunday, May 25
- Saturday, July 5 and Sunday, July 6

Please follow us on x at: <https://x.com/zurkopromotions> for announcements such as flea market cancellations due to weather, etc.

HOURS: 7AM TO 4PM

Admission: \$2

Early Buyers: Before 7am: \$10

– sorry, no dogs allowed

Shawano County Fairgrounds
990 E Green Bay Street
Shawano, WI 54166

New vendors welcome!

For dealer inquiries please call Zurko Promotions at 715-526-9769 or email office@zurkopromotions.com

Collector's Clique Celebrates 52nd Anniversary of its Annual Sale in Juneau, WI

By Paul Marose

JUNEAU, WISCONSIN--Fifty-two years and counting.

That was the look-back and the outlook at the Juneau Community Center February 23, when the Collector's Clique celebrated its fifty-second anniversary with their annual, antique and collectible sale.

Little did the 19 hobbyists who met at a park in Horicon, just a few miles from Juneau, know that their first, open-to-the-public sale in September 1973, would be followed by 52 yearly shows that outgrew Horicon City Hall and attracted enthusiasts from miles around.

"We were bottle and fruit-jar collectors when I got into it," longtime Juneau resident Bob Krueger said March 12, during the Clique's regular meeting at the Juneau American Legion.

"We decided to branch out and we originally called it 'The Collectors Club,'" said Krueger, who recalled the group, which had yet to formally organize, quickly found that name a bit too plain.

According to Krueger, "somebody said, 'how about a collectible thing, ... how about a clique?'"

The new name and new group clicked.

Krueger was joined March 12, by about 25 other Clique members for pizza, a little patter and reports from secretary/treasurer Karen Brown and show-organizer Carolyn Birr on the outcome of their recent event.

Birr said 450 paid admissions and 10 free, promotional passes came through between 9 a.m. to 2 p.m., creating a slightly smaller crowd than last year's, when 507 came to the community center gym to scour more than 50 tables stocked with bargains. Whether this year's entry fee increase from \$2.00 to \$3.00 caused the downturn was a matter of debate, with one member quoting a customer from Milwaukee who thought three bucks still was a bargain.

Attendance since the turn of this century has averaged about 500, according to Birr's records and those who signed up for prize drawings this year came to the Dodge County Seat from Wisconsin locales like Van Dyne, Red Granite, Brookfield, Hartland, Madison and West Bend.

Recent shows generally have been blessed with good weather, but February in Wisconsin can be fickle and can affect attendance.

Still, Stan Smith, of Juneau, once reported after a blizzard-blasted Sunday show, "plenty of folks got here and they were in a buying mood."

Smith, who like a lot of Clique vendors started as a bargain hunter, said he has been involved for at least 20 years and although longevity has its benefits, as the Clique tries to expand, age is a factor.

"Younger people don't collect," he observed March 12, adding that 25-to-40-year-olds who do collect, "are interested in things from the 70s and 80s."

Smith confesses a fondness for "stuff from the late 1800s and early 1900s," but always is on the lookout for Davy Crockett memorabilia even though "a lot of people don't remember him anymore."

Clique member and show vendor Kurt Mauer-mann, who operates Kurt's Classics collectible shop in Hustisford, just east of Juneau, aims to satisfy appetites of a younger crowd. He specializes in Star Wars everything, while stocking plenty of time-honored items like coins, breweriana and model kits for the traditional collector.

Krueger's interests have expanded to World War II memorabilia, rocks and minerals, marbles, Native-American artifacts and outboard motors, even

though he and the late Arnold Oathout posed for the show's first publicity photo May 30, 1973, with a few antique bottles and a display case of stone arrow-heads.

Krueger, 76, is the last living Collector's Clique charter member. He recalled that with the success of their first show, the founders were inspired to organize regular meetings which involved election of officers, a bit of formal business and plenty of "show and tell," a feature still popular at Clique meetings.

Be they quick displays of members' collections, longer discussions about corners of the hobby or field trips to members' homes, Clique show-and-tell sessions offer everybody a chance to share and expand knowledge.

Mark Schoenberger is the latest of a long line of Clique presidents and heads a roster of about 50, dues-paid members who encourage anyone to join or just stop by. There is an on-going effort to revive former members' participation and attract newcomers with family memberships at \$5.00 per year.

One of the perks of membership is first-dibs on show-table space, which always takes up the entire community center basketball court and decorates the surrounding walls. The walk-up counter open to the kitchen is the only space unoccupied by vintage values so beverages and hot food can be sold.

Children are welcome to the show and those under 12 years of age are admitted free.

In the early days, the Clique had to combat an incursion of crafters, rummagers and resellers, according to Krueger, to preserve the place for the strictly collectible. Today, all antiques, vintage items and collectibles, except pornography and firearms, are welcome.

Whether filled with who-knows-what from grandpa's attic or specialty items like Birr's vintage jewelry, Steve Mueller's antique area advertising or Madisonian Charles Doherty's seemingly acres of post cards, the Collector's Clique show offers something for the serious buyer and the casual, after-church browser who can't help telling somebody they "remember that" or "had one of those."



Vintage glassware was one of the hot items February 23, at the 52nd Annual Collector's Clique Antique and Collectible sale at the Juneau Community Center in Juneau, Wisconsin. From humble beginnings in Horicon, Wisconsin, the Collector's Clique now attracts an average 500 attendees each year.



Joe Sciascia, of Juneau, Wisconsin, stands by as buyers peruse his collectible military documents, books and plastic model kits February 23, at the 52nd Annual Collector's Clique Antique and Collectible sale at the Juneau Community Center in Juneau, Wisconsin.



Longtime Collector's Clique member and breweriana enthusiast Tom Gibson, left, of Oak Grove, Wisconsin, hawks a keg to a potential buyer February 23 at the 52nd Annual Collector's Clique Antique and Collectible sale at the Juneau Community Center in Juneau, Wisconsin.



WANT MORE OF THESE IN YOUR LIFE?

ANTIQUE SHOPS & MALLS

Our Directory guides you to shops and malls all over Wisconsin & surrounding states!

FLEA MARKETS, ANTIQUE/COLLECTIBLE SHOWS AND OTHER RELATED EVENTS

Our Calendar of Events, updated each month, lists events by date!

ARTICLES ON ANTIQUES AND COLLECTIBLES

Keep updated on a vast array of antique and collectible items!
Learn about new collecting fields!

Join all the subscribers who have found...

(Use this coupon or a reasonable facsimile)

YES! I want to subscribe to Yesteryear!

- Send me one year (12 issues). Enclosed is \$22
 Save a few dollars...2 years (24 issues). Enclosed is \$40

This subscription is...

- NEW RENEWAL A GIFT?

NAME _____

ADDRESS _____

CITY _____ STATE _____ ZIP _____

Mail to: Yesteryear Publications • PO Box 306 • Montello, WI 53949

Please allow 4-6 weeks for delivery of first issue



CALENDAR

An Ad This Size
in YESTERYEAR can cost as little as
\$27.75 per month!
(When placed in 12 monthly issues)

**And it will be read by 1,000's
of dealers & collectors!**

Contact us TODAY for complete details!
Ph: 608-297-7755
Email: yesteryearantiques@frontier.com
YESTERYEAR, PO Box 306, Montello, WI 53949

SATURDAY 8-5 ↔ SUNDAY 8-3
ADMISSION: \$2.00 ↔ FREE PARKING

GREEN COUNTY MARKET
JUNE 7-8, 2025
SEPTEMBER 6-7, 2025

FOOD ON GROUNDS

ANTIQUE & FLEA ARTISANS
BOUTIQUE FARMERS

VENDOR SPACES AVAILABLE
VENDOR APPLICATIONS AVAILABLE ONLINE
OR BY REQUEST.

2600 Tenth Street
Monroe, WI 53566
608-325-9159
greencountyfairgrounds@gmail.com

WHAT CHEER FLEA MARKET
2025 - 49th Year!

Early Bird Thursday - \$6.00
Fri & Sat Admission-\$4.00 per day
Sunday FREE!
OPEN AT 7 AM

Antiques • Collectibles • Well over 400 Dealers!
Fairgrounds on Hwy. 21, 20 mi. S. of I-80 (exit 201)

WHAT CHEER, IOWA
Dealer info: What Cheer Flea Market, Inc.
Bill Ludwig • (319) 404-4066
PO Box 2362, Waterloo, IA 50704
email: WhatCheerFleaMarket@gmail.com
www.whatcheerfleamarket.com

Outside Dealer Space \$55 in advance; \$60 at the gate

JEFFERSON BARGAIN FAIR
LARGE OUTDOOR FLEA MARKET & CRAFT FAIR

Located 6 miles W. of Jefferson, WI on Hwy. 18
at the Jefferson Speedway grounds

\$ Open Every Sunday
April 6th thru October 19th

ONLY \$20 Set-up Fee
Space approx. 18x25 • Larger Spaces Available
No Reservation Needed • Open 6:30a.m. to 2p.m.

FREE PARKING & ADMISSION!
Food-Beverages-Restrooms all on grounds
For more information call:
920-650-5755 or 920-648-2705
Come out for a Fun Day and look for a Bargain at the BARGAIN FAIR!

2025 A Cedarburg Fire Department Tradition for 59 YEARS!

MAXWELL ST. DAYS

The "Treasure Hunt" will continue
at Firemen's Park in historic Cedarburg, WI
W65N796 Washington Ave

MAY 25 • JULY 13 • AUG 31 • OCT 5
Our Legion Post 288 Has Convenient & Adjacent
Parking North of Grounds - \$10
Join us as an Attendee or a Vendor

We can accommodate over
500 QUALITY VENDORS of:
Antiques, Collectibles, Vintage,
Seasonal, Rummage,
Attic/Basement Treasures,
Pottery, Toys, Books, Tools,
Farm Items, Garage Finds,
Grandma's Keepsakes,
Crafters, Produce, Garden & More...

Gates Open 6 am - 2 pm
FREE Admission Rain/Shine

Great Food, Beverages & Volunteers!

For your convenience we offer a pick-up service from
vendor stands to loading zones for a small fee & a
place to drop off your smaller items, while you shop.
For More Information Visit:
cedarburgfiremenspark.com
cedarburgfiremenspark@gmail.com
Sorry, no animals allowed on grounds

Proceeds Benefit Cedarburg Fire Department
Serving The Community Since 1866

FREE LISTINGS!

We still offer FREE LISTINGS for events in our monthly
Calendar of Events--the largest found in any antique and
collectible publication circulated in the North Central States!
We welcome your listing of Antique Shows, Flea Markets,
Arts & Crafts Shows, Auctions and Events of Special Interest.

Please send showcard, flyer or handwrite
your event information and send/email to:
YESTERYEAR CALENDAR OF EVENTS
P.O. Box 306, Montello, WI 53949
yesteryearantiques@frontier.com

Remember, there is NO Charge for this service!
(Deadline is the 10th of the month prior to event month)

**EVENTS ARE SUBJECT TO CHANGE!
BEFORE TRAVELING IT IS A GOOD IDEA
TO CONFIRM EVENT**

**EVENTS MAY BE
SUBJECT TO CHANGE -**
Please Call Ahead or check
show status online for updates
prior to traveling!

SATURDAY, MARCH 22

ALSIP, IL: Tri-State Swap-O-Rama, 7am-4pm indoors/
outdoors at 4350 West 129th St. Admission: adults \$3.00;
seniors \$2.00. (708)344-7300

BELOIT, WI: Beloit Winter Crafter & Farmers' Market,
9am-Noon, Downtown Beloit Association, 557 E. Grand
Ave. (608) 365-0150

CALEDONIA, WI: 7 Mile Fair flea market. Indoor/Outdoor
9am-5pm. Admission: \$3 for 12 & up; \$1.00 Seniors. 2720
W. 7 Mile Rd. www.7milefair.com

CHICAGO, IL: Swap-O-Rama, 7am-4pm Indoors/Outdoors
at 4200 S. Ashland Ave. Admission: adults \$3.00; seniors
\$2.00 (708)344-7300

KENOSHA, WI: Kenosha Public Market's Indoor Winter
Market, Kemper Center, 6501 3rd Ave. 10am-2pm. Vari-
ety of local vendors, food trucks, full bar and SNAP market
match program available. www.visitkenosha.com

MANITOWOC, WI: Winter Farmers Market, The Venue
at Union Square, 702 York St. 8am to 12 noon. Local
produce, jams & jellies, baked goods, handmade crafts,
demonstrations, kids activities & musuc. www.grow-it-forward.org/manitowoc-winter-farmers-market

MELROSE PARK, IL: Swap-O-Rama, 7am-4pm indoors/
outdoors at 4600 W. Lake St. Admission Adults \$3.00;
Seniors \$2.00. (708)344-7300

SUNDAY, MARCH 23

ALSIP, IL: Tri-State Swap-O-Rama, 7am-4pm indoors/
outdoors at 4350 West 129th St. Admission: adults \$3.00;
seniors \$2.00. (708)344-7300

CALEDONIA, WI: 7 Mile Fair flea market. Indoor/Outdoor
9am-5pm. Admission: \$3 for 12 & up; \$1.00 Seniors. 2720
W. 7 Mile Rd. www.7milefair.com

CHICAGO, IL: Swap-O-Rama, 7am-4pm Indoors/Outdoors
at 4200 S. Ashland Ave. Admission: adults \$3.00; seniors
\$2.00 (708)344-7300

MELROSE PARK, IL: Swap-O-Rama, 7am-4pm indoors/
outdoors at 4600 W. Lake St. Admission Adults \$3.00;
Seniors \$2.00. (708)344-7300

OREGON, IL: 73rd Annual Antique Show, Sponsored
by the Oregon Woman's Club. Blackhawk Center, 1101
West Jefferson Street. Sat 9-5; Sun 10-3. Entry \$8.00
per person. Featuring over 40 Midwest antique dealers.
Appraisals on Sunday 10-2 (\$5 per item). Free parking.
Concessions. Proceeds from this annual event are used
for local community projects and charities. Facebook:
GFWC Oregon Woman's Club

ST. CLOUD, MN: Quad Con Comic & Toy Show at Cross-
roads Center, 4101 W. Division St. Over 50 vendors/
artists/authors will be taking over the Crossroads Center
during normal mall hours with Funko Pop vinyls, vintage
comics, posters, toys and much more, plus cosplay show-
case. Free Event. quadcitycon.com

****WAUKESHA, WI (MILWAUKEE):** Wisconsin Rummage-
O-Rama, Waukesha Co. Expo, 1000 Northview Rd.,
Waukesha Sat 9-5; Sun 9-4. Admission: \$4.00; FREE
Parking. Shop a huge variety of quality antiques, collect-
ibles, crafts, misc. & much more, all under 1 roof! Bargains
galore & a whole lot more! 414-481-5859. Facebook:
wirummageorama

27th ANNUAL
**Spring Swap Meet
Flea Market & Auction**

BADGER STEAM & GAS

- Gas Engines
- Tractors
- Farm Primitives
- Collectibles • Tools
- Cars & Trucks Parts

SWAP MEET IS 3 DAYS ON
OUR ALMOST 300 ACRE
SHOW SITE

**ENGINE CLUB
BARABOO, WIS**

MAY 2-3-4, 2025
7am-5pm • Food on Grounds!

MAY 3 - AUCTION AT 10AM
S3347 Sand Rd. off Hwy. 33-West, 4 miles N. of
BARABOO, WI

VENDOR RESERVATIONS: INDOOR SPACE available inside our Feature
Building for \$40 by reservation only. OUTSIDE SPACE \$40 for entire swap
meet, no reservation needed. Early set-up Thurs. May 1st starting at 8 a.m.

For More Information Contact
Robert Mattson 608-393-3021 - Swap Meet
fleamktmgr@badgersteamandgas.com
Anne Beard 608-381-0630 - Auction Info & Consignments
woodbrook5656@gmail.com
Mail: P.O. Box 255, Baraboo, WI 53913
(608) 393-3021 • www.badgersteamandgas.com

62nd Badger Steam & Gas Show:
August 15-16-17, 2025
FEATURING:

Mark Frey 608-212-6114 (Ferguson)
Neal Stone 608-963-5776 (Ford & Fordson)

Monticello, IA
Huge Flea Market
Antique & Collectible Show
Sunday, April 27th
JONES COUNTY FAIRGROUNDS
ONE OF IOWA'S LARGEST SHOWS WITH OVER 100 SELLERS!

8:30 A.M. TO 3:30 P.M. • ADM. \$5.00
319-462-0135
\$10 FOR EARLY BIRD ADMISSION:
6:30 - 8:30 A.M.

OF EVENTS

****WAUSAU, WI:** 41st Year Wausau Antique Sale & Show, DC Everest Sr. High School, G-T Field House, 6400 Alderson St., Weston, WI (Wausau suburb). 50 fantastic booths plus Victrola Repairer & more! Sat 9-5, Sun 10-3. Admission: \$7.00; Under 16 are free; good both days. Free parking. (715) 526-9769. www.zurkopromotions.com/wausau-wisconsin-antique-show-and-sale

WEDNESDAY, MARCH 26

ALSIP, IL: Tri-State Swap-O-Rama, 7am-2pm outdoors at 4350 West 129th St. Admission: adults \$1.00; seniors 50¢. (708)344-7300

THURSDAY, MARCH 27

APPLE VALLEY, MN: Dutch Door Vinage, 7570 W. 147th St., 5 miles south of Mall of America, Thurs 9am-7pm, Fri 9-6, Sat 9-5, Sun 11-4. www.hauptantiek.com (612) 860-5660. *HOP INTO SPRING* theme.

CHICAGO, IL: Swap-O-Rama, 7am-3pm outdoors at 4200 S. Ashland Ave. Admission: adults \$1.00; seniors 50¢ (708)344-7300

FRIDAY, MARCH 28

APPLE VALLEY, MN: Dutch Door Vinage, 7570 W. 147th St., 5 miles south of Mall of America, Thurs 9am-7pm, Fri 9-6, Sat 9-5, Sun 11-4. www.hauptantiek.com (612) 860-5660. *HOP INTO SPRING* theme.

****JANESVILLE, WI:** Annual Badger Knife Show, Holiday Inn Express & Conference Center, I-90 & US 14 at 3100 Wellington Place (Exit 171-B). Friday 12-5, Sat 9-5, Sun 9-2. Admission: \$5.00/3-day pass for \$8.00; children under 13 free w/adult. \$20 early bird pass. 175 tables featuring custom knives, factory knives, antique knives, dealers, suppliers, silent auction & displays. 414-479-9765; badgerknifeclub@aol.com

MELROSE PARK, IL: Swap-O-Rama, 7am-2pm outdoors at 4600 W. Lake St. Admission: Free (708)344-7300

SATURDAY, MARCH 29

ALSIP, IL: Tri-State Swap-O-Rama, 7am-4pm indoors/outdoors at 4350 West 129th St. Admission: adults \$3.00; seniors \$2.00. (708)344-7300

APPLE VALLEY, MN: Dutch Door Vinage, 7570 W. 147th St., 5 miles south of Mall of America, Thurs 9am-7pm, Fri 9-6, Sat 9-5, Sun 11-4. www.hauptantiek.com (612) 860-5660. *HOP INTO SPRING* theme.

BELOIT, WI: Beloit Winter Crafter & Farmers' Market, 9am-Noon, Downtown Beloit Association, 557 E. Grand Ave. (608) 365-0150

CALEDONIA, WI: 7 Mile Fair flea market. Indoor/Outdoor 9am-5pm. Admission: \$3 for 12 & up; \$1.00 Seniors. 2720 W. 7 Mile Rd. www.7milefair.com

CHICAGO, IL: Swap-O-Rama, 7am-4pm Indoors/Outdoors at 4200 S. Ashland Ave. Admission: adults \$3.00; seniors \$2.00 (708)344-7300

DES MOINES, IA: Quad Con Comic & Toy Show at Merle Hay Mall, 3800 Merle Hay Rd. It's a pop culture celebration inside the Merle Hay Mall in Des Moines. Quad Con is a family friendly event focusing on comics, art, video games, cosplay, toys, board games, sci-fi, pop vinyls, & more. Free Entry! quadcitycon.com

GREEN BAY, WI: Market on Military Indoor Winter Market at Green Bay Plaza, 1555 W. Mason St. 9am-1pm. Shop a variety of seasonal produce, preserved foods, bakery, plants, meat, eggs and crafts.

****JANESVILLE, WI:** Annual Badger Knife Show, Holiday Inn Express & Conference Center, I-90 & US 14 at 3100 Wellington Place (Exit 171-B). Friday 12-5, Sat 9-5, Sun 9-2. Admission: \$5.00/3-day pass for \$8.00; children under 13 free w/adult. \$20 early bird pass. 175 tables featuring custom knives, factory knives, antique knives, dealers, suppliers, silent auction & displays. 414-479-9765; badgerknifeclub@aol.com

KENOSHA, WI: Kenosha Public Market's Indoor Winter Market, Kemper Center, 6501 3rd Ave. 10am-2pm. Variety of local vendors, food trucks, full bar and SNAP market match program available. www.visitkenosha.com

MELROSE PARK, IL: Swap-O-Rama, 7am-4pm indoors/outdoors at 4600 W. Lake St. Admission Adults \$3.00; Seniors \$2.00. (708)344-7300

OSHKOSH, WI: Oshkosh Indoor Farmers Market, Oshkosh Convention Center, 2 N. Main St. 9am-12:30pm. 50+ vendors. <http://www.osfmi.com>; Weather Updates: (920) 509-1830

SUNDAY, MARCH 30

ALSIP, IL: Tri-State Swap-O-Rama, 7am-4pm indoors/outdoors at 4350 West 129th St. Admission: adults \$3.00; seniors \$2.00. (708)344-7300

APPLE VALLEY, MN: Dutch Door Vinage, 7570 W. 147th St., 5 miles south of Mall of America, Thurs 9am-7pm, Fri 9-6, Sat 9-5, Sun 11-4. www.hauptantiek.com (612) 860-5660. *HOP INTO SPRING* theme.

CALEDONIA, WI: 7 Mile Fair flea market. Indoor/Outdoor 9am-5pm. Admission: \$3 for 12 & up; \$1.00 Seniors. 2720 W. 7 Mile Rd. www.7milefair.com

CHICAGO, IL: Swap-O-Rama, 7am-4pm Indoors/Outdoors at 4200 S. Ashland Ave. Admission: adults \$3.00; seniors \$2.00 (708)344-7300

DES MOINES, IA: Quad Con Comic & Toy Show at Merle Hay Mall, 3800 Merle Hay Rd. It's a pop culture celebration inside the Merle Hay Mall in Des Moines. Quad Con is a family friendly event focusing on comics, art, video games, cosplay, toys, board games, sci-fi, pop vinyls, & more. Free Entry! quadcitycon.com

****JANESVILLE, WI:** Annual Badger Knife Show, Holiday Inn Express & Conference Center, I-90 & US 14 at 3100 Wellington Place (Exit 171-B). Friday 12-5, Sat 9-5, Sun 9-2. Admission: \$5.00/3-day pass for \$8.00; children under 13 free w/adult. \$20 early bird pass. 175 tables featuring custom knives, factory knives, antique knives, dealers, suppliers, silent auction & displays. 414-479-9765; badgerknifeclub@aol.com

MELROSE PARK, IL: Swap-O-Rama, 7am-4pm indoors/outdoors at 4600 W. Lake St. Admission Adults \$3.00; Seniors \$2.00. (708)344-7300

****ST FRANCIS (MILWAU-KEE), WI:** Flea Market Extravaganza, St. Francis Lions Center, 3476 E. Howard Ave. 9am-3pm. Admission: \$2.00; collectors 12 & under free. Free parking. Antiques, collectibles, glassware, jewelry, furniture, toys, household & more. Sponsored by the Depression Era Glass Society of Wisconsin, Inc. (414) 551-2017; www.facebook.com/degrow

TUESDAY, APRIL 1

CHICAGO, IL: Swap-O-Rama, am-2pm outdoors at 4200 S. Ashland Ave. Admission: adults \$1.00; seniors 50¢ (708)344-7300

(Continued on Page 14)

MAXWELL ST. DAYS
Cedarburg Firemen's Park
2025: MAY 25 • JULY 13 • AUG 31 • OCT 5
 Looking to add more Vendors of:
Produce, Garden, Crafters & Treasures
Spaces - \$50 • 262-377-8412
cedarburgfiremenspark.com • A 57 Year Department Tradition

Sportsman's Rummage Sale
Sat. April 5, 2025 • 8:00 am-1:00 pm
Beaver Dam, WI American Legion, 300 Beichl Ave.
 New and used sporting equipment. Rods-reels-lures (old & new)
 - Guns - Ammunition - Decoys - Clothing - Much more! Everything for the hunter, fisherman, trapper & collector. Admission: \$3.00
 Vendor Space Available!
Contact: Harold Drake - Event Organizer - 920-344-6443
 Sponsored by Dodge County Sporting Conservation Alliance

53RD YEAR! GRAHAM PARK, AKA OLMSTED CO.
GOLD RUSH
ANTIQUÉ SHOW & FLEA MARKET
MAY 9-10-11, 2025
ROCHESTER, MN
 Graham Arenas 1, 2 & 3
 1570 Fairgrounds Ave SE • Free Parking • Admission \$10.00
 Buildings open FRI/SAT 8am-6pm • SUN 8am-2pm
 Inside Space Available
Call: 507-269-1473
www.townsendshows.com • Like & Share Us on Facebook

FLEA MARKET AT WAUKESHA CO. EXPO
WISCONSIN RUMMAGE-O-RAMA
SAT & SUN: APRIL 12-13, 2025
Show Hours: Sat 9am-5pm / Sun 9am-4pm
1000 Northview Rd. - Waukesha, WI
 Admission: \$5.00; Children under 12: Free
 Senior & Military: \$3.00 • FREE Parking
Shop a huge variety of quality Antiques, Collectibles, Crafts, Misc. & much more, all under 1 roof! Bargains Galore, & A Whole Lot More!
VENDOR INFO: (414) 481-5859
www.wirummageorama.com...Or see us on

HOWARD Restor-A-Shine Wood Finish Polishing Compound

- Revive dull areas and eliminate steel wool marks and other surface blemishes
- Complete the restoration of a high shine wood finish after using Restor-A-Finish
- Use for final buffing stage to a newly applied high gloss finish
- Specially formulated for polyurethane finishes

• FURNITURE • INSTRUMENTS • BAR TOPS

RESTOR-A-SHINE WOOD FINISH POLISHING COMPOUND
 WITH MICRO POLISHING POWDERS
 WOOD FINISH POLISHING COMPOUND
 • Polishes wood finishes to a high gloss
 • Buffs out light scratches and hazing
 • Specially formulated for polyurethane

CAUTION: COMBUSTIBLE
 READ OTHER SAFETY ON BACK PANEL
 CONTENTS: 18 FL. OZ. (473 ml)

**VISIT OUR WEBSITE WWW.HOWARDPRODUCTS.COM
 OR CALL (800) 266-9545
 TO FIND A DEALER IN YOUR AREA**

Uff-da!

The Uff da! Sign Store
Ya Ya! You Betchal!

Great Ideas for the Man Cave, She-Shed, Garage, Bar Area Or?

We are located next to the VA Clinic, between Harbor Freight & the new Ollie's!

COME SEE US AT OUR OUTDOOR SHOWS!

- ★ April 25-26, 2025 - Jefferson Car Show
- ★ July 10-12, 2025 - Iola Car Show
- ★ Aug 22-24, 2025 - Edgar Steam Tractor Show
- ★ We will be at the weekly Shawano Flea Market most Sundays starting in Spring 2025

**Open 10-4
 7 Days a Week**

715-298-9339 • www.uffdahh.com
 1103 East Grand Ave, Rothschild, WI 54474
 Near Wausau, Just off Hwy 29.

CALENDAR OF EVENTS: Shows, Flea Markets & More!

WEDNESDAY, APRIL 2

ALSIP, IL: Tri-State Swap-O-Rama, 7am-2pm outdoors at 4350 West 129th St. Admission: adults \$1.00; seniors 50¢. (708)344-7300

SHIPSHEWANA, IND: Weekly Misc. & Antique Auction, 9AM start. 345 S Van Buren St. "Shipshewana Auction Misc. & Antique Building." Live auction with 6-10 Auctioneers selling simultaneously. shipshewanatradingplace.com; (260) 768-4129.

THURSDAY, APRIL 3

CHICAGO, IL: Swap-O-Rama, 7am-3pm outdoors at 4200 S. Ashland Ave. Admission: adults \$1.00; seniors 50¢ (708)344-7300

FRIDAY, APRIL 4

MELROSE PARK, IL: Swap-O-Rama, 7am-2pm outdoors at 4600 W. Lake St. Admission: Free (708)344-7300

SATURDAY, APRIL 5

ALSIP, IL: Tri-State Swap-O-Rama, 7am-4pm indoors/outdoors at 4350 West 129th St. Admission: adults \$3.00; seniors \$2.00. (708)344-7300

****BEAVER DAM, WI:** Sportsmen's Rummage Sale, at American Legion, 300 Beichl Ave. 8:00am-1:00pm. New and used sporting equipment. Rods-reels-lures (old & new) - Guns - Ammunition - Decoys - Clothing - Much more! Some larger items Such as Boats - ATV - Ice shelters may also be available. Admission: \$3.00. Sponsored by Dodge County Sporting/Conservation Alliance. 920-344-6443

BELOIT, WI: Beloit Winter Crafter & Farmers' Market, 9am-Noon, Downtown Beloit Association, 557 E. Grand Ave. (608) 365-0150

CALEDONIA, WI: 7 Mile Fair flea market. Indoor/Outdoor 9am-5pm. Admission: \$3 for 12 & up; \$1.00 Seniors. 2720 W. 7 Mile Rd. www.7milefair.com

CHICAGO, IL: Swap-O-Rama, 7am-4pm Indoors/Outdoors at 4200 S. Ashland Ave. Admission: adults \$3.00; seniors \$2.00 (708)344-7300

GREEN BAY, WI: Market on Military Indoor Winter Market at Green Bay Plaza, 1555 W. Mason St. 9am-1pm. Shop a variety of seasonal produce, preserved foods, bakery, plants, meat, eggs and crafts.

GREENFIELD, WI: Whitnall Park Rotary Craft & Art Fair, Whitnall High School, 5000 S. 116th St. 9am-3pm. Donation: \$4.00; 10 & under free. (414) 282-3377

JANESVILLE, WI: Winter Farmers Market at Uptown Janesville (Janesville Mall), 2500 Milton Ave. 10am-1pm

KALAMAZOO, MI: Kalamazoo Antique Bottle Club Annual Bottle & Glass Show, at Kalamazoo County Fairgrounds/Expo Center, 2900 Lake St. (Exit 80, off I-94). 10:00am-2:30pm. Early American bottles, flasks, & glass + related items. Free appraisals. Admission: \$3.00; senior citizens \$2.00; kids under 12 free with adult. www.kalamazoobottleclub.org.

KENOSHA, WI: Kenosha Public Market's Indoor Winter Market, Kemper Center, 6501 3rd Ave. 10am-2pm. Variety of local vendors, food trucks, full bar and SNAP market match program available. www.visitkenosha.com

MADISON, WI: 53rd Annual Madison Area Doll Club Annual Doll Show & Sale. 9:00 AM to 3:00 PM. Alliant Energy Center Exhibition Hall, 1919 Alliant Energy Way, Madison WI 53713. Admission \$10; 12 and under free with adult. Parking \$8. National vendors, educational display, appraisals & more. Vicki 608-279-5298; dollcoll@charter.net; & Madison Area Doll Club on FB.

MANITOWOC, WI: Winter Farmers Market, The Venue at Union Square, 702 York St. 8am to 12 noon. Local produce, jams & jellies, baked goods, handmade crafts, demonstrations, kids activities & music. www.grow-it-forward.org/manitowoc-winter-farmers-market

MELROSE PARK, IL: Swap-O-Rama, 7am-4pm indoors/outdoors at 4600 W. Lake St. Admission Adults \$3.00; Seniors \$2.00. (708)344-7300

MILWAUKEE, WI: Re:Craft & Relic Spring Market, Sat. & Sun. General Admission: 11-4. Milwaukee County Sports Complex, 6000 W. Ryan Rd., Franklin. Booths with vintage, upcycled, and handmade goods and supplies. Live music + food trucks. Admission info: www.recraftandrelic.com

ROCKFORD, IL: 65th Annual Northern Illinois Antiques Dealers Assn. Show. Tebala Event Center, 7910 Newburg Rd., Rockford, IL. Donation \$8.00. Free Parking. Saturday 10-5; Sunday 11-3. (815) 355-1746. www.NIADAantiques.com

ST. CHARLES, IL: Kane County Antique Flea Market, Kane County Fairgrounds at 525 S. Randall Road. Up to 400 dealers. Sat 12:00-5:00 pm.; Sun 7-4. Adm: Adults \$6.00; children under 12 free with adult. Free parking. www.kane-countyfleamarket.com. 630-377-2252; 630-708-8911

SUNDAY, APRIL 6

ALSIP, IL: Tri-State Swap-O-Rama, 7am-4pm indoors/outdoors at 4350 West 129th St. Admission: adults \$3.00; seniors \$2.00. (708)344-7300

CALEDONIA, WI: 7 Mile Fair flea market. Indoor/Outdoor 9am-5pm. Admission: \$3 for 12 & up; \$1.00 Seniors. 2720 W. 7 Mile Rd. www.7milefair.com

CHICAGO, IL: Swap-O-Rama, 7am-4pm Indoors/Outdoors at 4200 S. Ashland Ave. Admission: adults \$3.00; seniors \$2.00 (708)344-7300



****JEFFERSON, WI:** Jefferson Bargain Fair Flea Market & Craft Fair. Jefferson Speedway grounds, Hwy. 18; 6 miles W. of Jefferson. 6:30am-2pm. Free Admission. (920)648-6407 or 648-2705

MELROSE PARK, IL: Swap-O-Rama, 7am-4pm indoors/outdoors at 4600 W. Lake St. Admission Adults \$3.00; Seniors \$2.00. (708)344-7300

MILWAUKEE, WI: Re:Craft & Relic Spring Market, Sat. & Sun. General Admission: 11-4. Milwaukee County Sports Complex, 6000 W. Ryan Rd., Franklin. Booths with vintage, upcycled, and handmade goods and supplies. Live music + food trucks. Admission info: www.recraftandrelic.com

RACINE, WI: Quad Con Comic Book & Toy Show, Festival Hall at Racine Civic Centre, 5 5th St. Day of comics, toys, posters, original art, cards, cosplay! Over 70 vendor/artist spots are taking over the Racine Civic Centre in downtown Racine (right by the Racine Art Museum). 10am-4pm. Admission: \$5.00; kids 12 & under & active military free. quadcitycon.com

ROCKFORD, IL: 65th Annual Northern Illinois Antiques Dealers Assn. Show. Tebala Event Center, 7910 Newburg Rd., Rockford, IL. Donation \$8.00. Free Parking. Saturday 10-5; Sunday 11-3. (815) 355-1746. www.NIADAantiques.com

ST. CHARLES, IL: Kane County Antique Flea Market, Kane County Fairgrounds at 525 S. Randall Road. Up to 400 dealers. Sat 12:00-5:00 pm.; Sun 7-4. Adm: Adults \$6.00; children under 12 free with adult. Free parking. www.kane-countyfleamarket.com. 630-377-2252; 630-708-8911

TUESDAY, APRIL 8

CHICAGO, IL: Swap-O-Rama, 7am-2pm outdoors at 4200 S. Ashland Ave. Admission: adults \$1.00; seniors 50¢ (708)344-7300

WEDNESDAY, APRIL 9

ALSIP, IL: Tri-State Swap-O-Rama, 7am-2pm outdoors at 4350 West 129th St. Admission: adults \$1.00; seniors 50¢. (708)344-7300

SHIPSHEWANA, IND: Weekly Misc. & Antique Auction, 9AM start. 345 S Van Buren St. "Shipshewana Auction Misc. & Antique Building." Live auction with 6-10 Auctioneers selling simultaneously. shipshewanatradingplace.com; (260) 768-4129.

THURSDAY, APRIL 10

CHICAGO, IL: Swap-O-Rama, 7am-3pm outdoors at 4200 S. Ashland Ave. Admission: adults \$1.00; seniors 50¢ (708)344-7300

FRIDAY, APRIL 11

MELROSE PARK, IL: Swap-O-Rama, 7am-2pm outdoors at 4600 W. Lake St. Admission: Free (708)344-7300

NEKOOSA, WI: Rome Indoor Maker's Market, Rome Town Hall, 1156 Alpine Dr., Nekoosa. Noon to 3pm. www.rome-farmersmarket.com

SATURDAY, APRIL 12

ALSIP, IL: Tri-State Swap-O-Rama, 7am-4pm indoors/outdoors at 4350 West 129th St. Admission: adults \$3.00; seniors \$2.00. (708)344-7300

BELOIT, WI: Beloit Winter Crafter & Farmers' Market, 9am-Noon, Downtown Beloit Association, 557 E. Grand Ave. (608) 365-0150

CALEDONIA, WI: 7 Mile Fair flea market. Indoor/Outdoor 9am-5pm. Admission: \$3 for 12 & up; \$1.00 Seniors. 2720 W. 7 Mile Rd. www.7milefair.com

CHICAGO, IL: Swap-O-Rama, 7am-4pm Indoors/Outdoors at 4200 S. Ashland Ave. Admission: adults \$3.00; seniors \$2.00 (708)344-7300

FOND DU LAC, WI: Central Wis. Gun Collectors Association Show, Fond du Lac Co. Fairgrounds, 495 Martin Ave. Sat 8-5; Sun 8-2. Admission: Saturday-\$10.00; Sunday-\$5.00. (920) 634-9909; centralwisconsin-gun.org

GERMANTOWN, WI: Second Sunday Flea Market at corner of Pilgrim Rd. & Fond du Lac Ave., W156N11500 Pilgrim Rd., behind Pilgrim Antique Mall. 8:00am-3:00pm. Inside vendors (& outside, weather permitting). Admission: \$1.00. Info: Randy at 816-536-9089.

****GRAYSLAKE, IL:** Grayslake Antique Market, Lake County Fairgrounds, 1060 E. Peterson Rd., Sat 9-4; Sun 9-3. Admission: \$8.00; Early Buyers Sat. 8-9am \$25; 12 & under free w/adult. Free Parking (715) 526-9769. https://www.facebook.com/GrayslakeAntiqueMarket/; www.zurko-promotions.com

KENOSHA, WI: Kenosha Public Market's Indoor Winter Market, Kemper Center, 6501 3rd Ave. 10am-2pm. Variety of local vendors, food trucks, full bar and SNAP market match program available. www.visitkenosha.com

MELROSE PARK, IL: Swap-O-Rama, 7am-4pm indoors/outdoors at 4600 W. Lake St. Admission Adults \$3.00; Seniors \$2.00. (708)344-7300

OSHKOSH, WI: Oshkosh Indoor Farmers Market, Oshkosh Arena, 1212 S. Main St. 9am-12:30pm. 50+ vendors. http://www.osfmi.com; Weather Updates: (920) 509-1830

****WAUKESHA, WI (MILWAUKEE):** Wisconsin Rummage-O-Rama, Waukesha Co. Expo, 1000 Northview Rd., Waukesha Sat 9-5; Sun 9-4. Admission: \$4.00; FREE Parking. Shop a huge variety of quality antiques, collectibles, crafts, misc. & much more, all under 1 roof! Bargains galore & a whole lot more! 414-481-5859. Facebook: wirummageorama

SUNDAY, APRIL 13

ALSIP, IL: Tri-State Swap-O-Rama, 7am-4pm indoors/outdoors at 4350 West 129th St. Admission: adults \$3.00; seniors \$2.00. (708)344-7300

CALEDONIA, WI: 7 Mile Fair flea market. Indoor/Outdoor 9am-5pm. Admission: \$3 for 12 & up; \$1.00 Seniors. 2720 W. 7 Mile Rd. www.7milefair.com

CHICAGO, IL: Swap-O-Rama, 7am-4pm Indoors/Outdoors at 4200 S. Ashland Ave. Admission: adults \$3.00; seniors \$2.00 (708)344-7300

FOND DU LAC, WI: Central Wis. Gun Collectors Association Show, Fond du Lac Co. Fairgrounds, 495 Martin Ave. Sat 8-5; Sun 8-2. Admission: Saturday-\$10.00; Sunday-\$5.00. (920) 634-9909; centralwisconsin-gun.org

****GRAYSLAKE, IL:** Grayslake Antique Market, Lake County Fairgrounds, 1060 E. Peterson Rd., Sat 9-4; Sun 9-3. Admission: \$8.00; Early Buyers Sat. 8-9am \$25; 12 & under free w/adult. Free Parking (715) 526-9769. https://www.facebook.com/GrayslakeAntiqueMarket/; www.zurko-promotions.com

****JEFFERSON, WI:** Jefferson Bargain Fair Flea Market & Craft Fair. Jefferson Speedway grounds, Hwy. 18; 6 miles W. of Jefferson. 6:30am-2pm. Free Admission. (920)648-6407 or 648-2705

MELROSE PARK, IL: Swap-O-Rama, 7am-4pm indoors/outdoors at 4600 W. Lake St. Admission Adults \$3.00; Seniors \$2.00. (708)344-7300

PEORIA, IL: Central Illinois Flea Market at the Peoria Speedway, 3520 Farmington Rd. Admission: \$3. Open 9:00am-3:00pm. 200+ spaces available. (309) 339-4471; peoriafleamarket.com

ST CHARLES, MO: Quad Con Comic & Toy Show at Steel Shop Athletics & Events Centre, 49 Lawrence St. 10am-4pm. An affordable, family friendly event focusing on comics, art, video games, cosplay, toys, board games, sci fi, pop vinyls, & more. \$5 Entry, free after 2:30. quadcitycon.com

SPRINGFIELD, IL: Indoor Flea Market at Illinois State Fairgrounds, Illinois Building, Main Gate at Sangamon Ave. & 11th Street. 8:00am-3:00pm. Admission \$2.00; 12 & under free w/adult. https://springfieldfleamarket.net



ELKHORN ANTIQUE FLEA MARKET

2025 - 44th Season! Rain or Shine

May 18 • June 29
Aug 10 • Sept 28

FAIRGROUNDS • Hwy. 11

Open 7am • Gate \$5.00 • FREE PARKING

Good Food • Paved Walkways • No Pets

OVER 500 INSIDE & OUTSIDE DEALERS!

FEATURING GREAT ANTIQUES & COLLECTIBLES~WISCONSIN'S FINEST!

414-525-0820 • nlpromotionsllc@gmail.com
elkhornantiquefleamarket.com

CALENDAR OF EVENTS: Shows, Flea Markets & More!

****WAUKESHA, WI (MILWAUKEE):** Wisconsin Rummage-O-Rama, Waukesha Co. Expo, 1000 Northview Rd., Waukesha Sat 9-5; Sun 9-4. Admission: \$4.00; FREE Parking. Shop a huge variety of quality antiques, collectibles, crafts, misc. & much more, all under 1 roof! Bargains galore & a whole lot more! 414-481-5859. Facebook: wirummageorama

TUESDAY, APRIL 15

CHICAGO, IL: Swap-O-Rama, 7am-2pm outdoors at 4200 S. Ashland Ave. Admission: adults \$1.00; seniors 50¢ (708)344-7300

WEDNESDAY, APRIL 16

ALSIP, IL: Tri-State Swap-O-Rama, 7am-2pm outdoors at 4350 West 129th St. Admission: adults \$1.00; seniors 50¢. (708)344-7300

SHIPSHEWANA, IND: Weekly Misc. & Antique Auction, 9AM start. 345 S Van Buren St. "Shipshewana Auction Misc. & Antique Building." Live auction with 6-10 Auctioneers selling simultaneously. shipshewanatradingplace.com; (260) 768-4129.

THURSDAY, APRIL 17

CHICAGO, IL: Swap-O-Rama, 7am-3pm outdoors at 4200 S. Ashland Ave. Admission: adults \$1.00; seniors 50¢ (708)344-7300

FRIDAY, APRIL 18

MELROSE PARK, IL: Swap-O-Rama, 7am-2pm outdoors at 4600 W. Lake St. Admission: Free (708)344-7300

SATURDAY, APRIL 19

ALSIP, IL: Tri-State Swap-O-Rama, 7am-4pm indoors/outdoors at 4350 West 129th St. Admission: adults \$3.00; seniors \$2.00. (708)344-7300

****APPLETON, WI:** Holiday Gift & Craft Show at the Fox Cities Exhibition Center, 355 W. Lawrence St. Join us this Holiday Season for a Gift & Craft Show and shop vendors who will bring you amazing vintage and handmade goods! 8am-4pm. Tickets \$5.00; Children 12 & under free with adult. www.zurkopromotions.com; (715) 526-9768

BELOIT, WI: Beloit Winter Crafter & Farmers' Market, 9am-Noon, Downtown Beloit Association, 557 E. Grand Ave. (608) 365-0150

CALEDONIA, WI: 7 Mile Fair flea market. Indoor/Outdoor 9am-5pm. Admission: \$3 for 12 & up; \$1.00 Seniors. 2720 W. 7 Mile Rd. www.7milefair.com

CHICAGO, IL: Swap-O-Rama, 7am-4pm Indoors/Outdoors at 4200 S. Ashland Ave. Admission: adults \$3.00; seniors \$2.00 (708)344-7300

GREEN BAY, WI: Market on Military Indoor Winter Market at Green Bay Plaza, 1555 W. Mason St. 9am-1pm. Shop a variety of seasonal produce, preserved foods, bakery, plants, meat, eggs and crafts.

KENOSHA, WI: Kenosha Public Market's Indoor Winter Market, Kemper Center, 6501 3rd Ave. 10am-2pm. Variety of local vendors, food trucks, full bar and SNAP market match program available. www.visitkenosha.com

MANITOWOC, WI: Winter Farmers Market, The Venue at Union Square, 702 York St. 8am to 12 noon. Local produce, jams & jellies, baked goods, handmade crafts, demonstrations, kids activities & music. www.grow-it-forward.org/manitowoc-winter-farmers-market

MELROSE PARK, IL: Swap-O-Rama, 7am-4pm indoors/outdoors at 4600 W. Lake St. Admission Adults \$3.00; Seniors \$2.00. (708)344-7300

OSHKOSH, WI: Oshkosh Easter Market & Spring Bazaar, Oshkosh Convention Center, 2 N. Main St. 9am-1:30pm. 30+ vendors. http://www.osfmi.com

PRINCETON, WI: 50th Anniversary Famous Princeton Flea Market! Tree-shaded city park, Hwy. 23/73 (S. Fulton St.). Open at 6am-1pm for vendors and customers. Free admission & parking. Food stand on site. www.princetonwi.com

SIOUX FALLS, IA: Sioux Falls Comic & Toy Show, Ramkota Inn Exhibit Hall, Best Western Plus Ramkota Hotel, 3200 W. Maple St. 10am-4pm. This is an affordable family friendly event focusing on comics, toys, cosplay, games, and art. Cosplay showcase. Entry fee: \$5; free after 2:30 pm. quadcitycon.com

SUNDAY, APRIL 20

EASTER

ALSIP, IL: Tri-State Swap-O-Rama, 7am-4pm indoors/outdoors at 4350 West 129th St. Admission: adults \$3.00; seniors \$2.00. (708)344-7300

CALEDONIA, WI: 7 Mile Fair flea market. Indoor/Outdoor 9am-5pm. Admission: \$3 for 12 & up; \$1.00 Seniors. 2720 W. 7 Mile Rd. www.7milefair.com

CHICAGO, IL: Swap-O-Rama, 7am-4pm Indoors/Outdoors at 4200 S. Ashland Ave. Admission: adults \$3.00; seniors \$2.00 (708)344-7300

****JEFFERSON, WI:** Jefferson Bargain Fair Flea Market & Craft Fair. Jefferson Speedway grounds, Hwy. 18; 6 miles W. of Jefferson. 6:30am-2pm. Free Admission. (920)648-6407 or 648-2705

MELROSE PARK, IL: Swap-O-Rama, 7am-4pm indoors/outdoors at 4600 W. Lake St. Admission Adults \$3.00; Seniors \$2.00. (708)344-7300

TUESDAY, APRIL 22

CHICAGO, IL: Swap-O-Rama, 7am-2pm outdoors at 4200 S. Ashland Ave. Admission: adults \$1.00; seniors 50¢ (708)344-7300

WEDNESDAY, APRIL 23

ALSIP, IL: Tri-State Swap-O-Rama, 7am-2pm outdoors at 4350 West 129th St. Admission: adults \$1.00; seniors 50¢. (708)344-7300

SHIPSHEWANA, IND: Special Antique Toy Auction, 345 S. Van Buren St. - Shipshewana Auction Miscellaneous & Antique Building. 9:00 am start. Live auction with 6-10 auctioneers selling simultaneously. shipshewanatradingplace.com; (260) 768-4129

THURSDAY, APRIL 24

APPLE VALLEY, MN: Dutch Door Vinage, 7570 W. 147th St., 5 miles south of Mall of America, Thurs 9am-7pm, Fri 9-6, Sat 9-5, Sun 11-4. www.hauptantiek.com (612) 860-5660. GARDEN GATE theme.

CHICAGO, IL: Swap-O-Rama, 7am-3pm outdoors at 4200 S. Ashland Ave. Admission: adults \$1.00; seniors 50¢ (708)344-7300

FRIDAY, APRIL 25

APPLE VALLEY, MN: Dutch Door Vinage, 7570 W. 147th St., 5 miles south of Mall of America, Thurs 9am-7pm, Fri 9-6, Sat 9-5, Sun 11-4. www.hauptantiek.com (612) 860-5660. GARDEN GATE theme.

MELROSE PARK, IL: Swap-O-Rama, 7am-2pm outdoors at 4600 W. Lake St. Admission: Free (708)344-7300

SATURDAY, APRIL 26

ALSIP, IL: Tri-State Swap-O-Rama, 7am-4pm indoors/outdoors at 4350 West 129th St. Admission: adults \$3.00; seniors \$2.00. (708)344-7300

APPLE VALLEY, MN: Dutch Door Vinage, 7570 W. 147th St., 5 miles south of Mall of America, Thurs 9am-7pm, Fri 9-6, Sat 9-5, Sun 11-4. www.hauptantiek.com (612) 860-5660. GARDEN GATE theme.

BELOIT, WI: Beloit Winter Crafter & Farmers' Market, 9am-Noon, Downtown Beloit Association, 557 E. Grand Ave. (608) 365-0150

CALEDONIA, WI: 7 Mile Fair flea market. Indoor/Outdoor 9am-5pm. Admission: \$3 for 12 & up; \$1.00 Seniors. 2720 W. 7 Mile Rd. www.7milefair.com

CHICAGO, IL: Swap-O-Rama, 7am-4pm Indoors/Outdoors at 4200 S. Ashland Ave. Admission: adults \$3.00; seniors \$2.00 (708)344-7300

FOND DU LAC, WI: Springtime Splendor Art & Craft Show, Fond du Lac County Fairgrounds Recreation Center, 534 Fond du Lac Ave. 9am-2pm. Admission: \$2.00. Shop at over 90 vendors. 920-929-2885

GRAFTON, IL: Riverside Flea Market at The Loading Dock, 401 E. Front St. Sat 9:00-5:00; Sun 9:00-4:00. (618) 556-7951; www.graftonloadingdock.com

KENOSHA, WI: Kenosha Public Market's Indoor Winter Market, Kemper Center, 6501 3rd Ave. 10am-2pm. Variety of local vendors, food trucks, full bar and SNAP market match program available. www.visitkenosha.com

MADISON, WI: Wisconsin Alpaca & Fiber Fest, Alliant Energy Center, 1919 Alliant Energy Center Way. See alpacas on display, fiber arts contests & classes, seminars and over 50 vendors. Free admission. www.wisconsinalpaca-fiberfest.com

MELROSE PARK, IL: Swap-O-Rama, 7am-4pm indoors/outdoors at 4600 W. Lake St. Admission Adults \$3.00; Seniors \$2.00. (708)344-7300

OSHKOSH, WI: B'Gosh It's Good Bi-Annual Breweriana Show at Fifth Ward Brewing Co., 1009 S. Main St. 12 Noon-4:00pm. Free admission to public & vendors. Booth reservations: (920) 410-7073. Sponsored by NABA.

PRINCETON, WI: 50th Anniversary Famous Princeton Flea Market! Tree-shaded city park, Hwy. 23/73 (S. Fulton St.). Open at 6am-1pm for vendors and customers. Free admission & parking. Food stand on site. www.princetonwi.com

SHIPSHEWANA, IND: Shipshewana Swap Meet, 345 S. Van Buren St. Daylight to 1:00pm. All kinds of fowl, poultry, small animals, pets, produce, baked goods, plants/trees, hunting & fishing items, antiques & more. Parking: \$5.00. Info: 260-768-4129; shipshewanatradingplace.com

****WHEATON, IL:** Chicagoland Civil War Collector's Show & Sale, plus Collector Arms (CADA) Show & Sale. DuPage Co. Fairgrounds, 2015 W. Manchester. 9am-4pm. Admission: \$10. Early Buyers at 8am: \$25. Free parking. Civil War, Revolutionary War, WWI, WWII, and many more eras. (715) 526-9769; www.ChicagoCivilWarShow.com

SUNDAY, APRIL 27

ALSIP, IL: Tri-State Swap-O-Rama, 7am-4pm indoors/outdoors at 4350 West 129th St. Admission: adults \$3.00; seniors \$2.00. (708)344-7300

APPLE VALLEY, MN: Dutch Door Vinage, 7570 W. 147th St., 5 miles south of Mall of America, Thurs 9am-7pm, Fri 9-6, Sat 9-5, Sun 11-4. www.hauptantiek.com (612) 860-5660. GARDEN GATE theme.

CALEDONIA, WI: 7 Mile Fair flea market. Indoor/Outdoor 9am-5pm. Admission: \$3 for 12 & up; \$1.00 Seniors. 2720 W. 7 Mile Rd. www.7milefair.com

CHICAGO, IL: Swap-O-Rama, 7am-4pm Indoors/Outdoors at 4200 S. Ashland Ave. Admission: adults \$3.00; seniors \$2.00 (708)344-7300

CHICAGO, IL: Modern Vintage Chicago Fashion & Home shopping event. Ravenswood Event Center, 4021 N. Ravenswood Ave. 10am-5pm. See and shop a stunning selection of vintage clothing, jewelry, handbags and accessories from 1890's-2000's as well as global goods, decorative arts, vinyl and more! Admission at the gate or see www.randolphstreetmarket.com.

GRAFTON, IL: Riverside Flea Market at The Loading Dock, 401 E. Front St. Sat 9:00-5:00; Sun 9:00-4:00. (618) 556-7951; www.graftonloadingdock.com

****JEFFERSON, WI:** Jefferson Bargain Fair Flea Market & Craft Fair. Jefferson Speedway grounds, Hwy. 18; 6 miles W. of Jefferson. 6:30am-2pm. Free Admission. (920)648-6407 or 648-2705

MADISON, WI: Wisconsin Alpaca & Fiber Fest, Alliant Energy Center, 1919 Alliant Energy Center Way. See alpacas on display, fiber arts contests & classes, seminars and over 50 vendors. Free admission. www.wisconsinalpaca-fiberfest.com

MELROSE PARK, IL: Swap-O-Rama, 7am-4pm indoors/outdoors at 4600 W. Lake St. Admission Adults \$3.00; Seniors \$2.00. (708)344-7300

****MONTICELLO, IA:** Huge Flea Market, Antique & Collectible Show, Jones County Fairgrounds, 800 N. Maple St. 8:30-3:30. Admission \$5.00, 10 & under free; early bird at 6:30am - \$10. Waterman Promotions 319-462-0135

ST CHARLES, IL: 52nd Year Chicago Toy Show, Kane County Fairgrounds, 525 S. Randall Rd. 600+ exhibitors of antique toys and dolls. 8am-3pm. Admission: \$10, 12 & under free; Free Parking. 847-800-3009; www.chicagotoy-show.com

****SHAWANO, WI:** Shawano Flea Market, 55th year, featuring more than 150 vendors at the Shawano Co. Fairgrounds, 990 E. Green Bay St. Antiques, Collectibles, Crafts, Vintage, Mid Century Modern, Gardening, New & Old, Advertising, Old Toys, & More. 7:00am-4:00pm. Adm: \$2.00. Early buyers before 7am are \$10. (715) 526-9769. www.zurkopromotions.com

WILMOT, WI: Wilmot Flea Market, at the Kenosha County Fairgrounds, 30820 111th St. 7am-2pm. Admission: Adults \$2.00; Seniors & kids 6-14 \$1.00; kids 5 & under free. Free parking. (262) 716-5716; wilmotfleamarket.net

TUESDAY, APRIL 29

CHICAGO, IL: Swap-O-Rama, 7am-2pm outdoors at 4200 S. Ashland Ave. Admission: adults \$1.00; seniors 50¢ (708)344-7300

WEDNESDAY, APRIL 30

ALSIP, IL: Tri-State Swap-O-Rama, 7am-2pm outdoors at 4350 West 129th St. Admission: adults \$1.00; seniors 50¢. (708)344-7300

THURSDAY, MAY 1

CHICAGO, IL: Swap-O-Rama, 7am-3pm outdoors at 4200 S. Ashland Ave. Admission: adults \$1.00; seniors 50¢ (708)344-7300

****WHAT CHEER, IA:** 49th Annual What Cheer Flea Market, at the Keokuk Conty Fairgrounds, 13061 170th St.; I-80, exit 201, 20 miles south on Hwy. 21. Open 7:00am. Early Bird Thursday admission: \$6.00; Adm: \$4.00 Fri/Sat; free on Sunday. www.whatcheerfleamarket.com. (319) 404-4066; Facebook: What Cheer Flea Market.

FRIDAY, MAY 2

****BARABOO, WI:** 27th Annual Badger Steam & Gas Engine Club Spring Swap Meet, Flea Market & Auction, S3347 Sand Rd. off Hwy. 33 West, 4 miles north of Baraboo. 7am-5pm daily. Free Admission, Free Parking. Flea/Swap meet is all 3 days. Over 600 vendor sites available on 5+ acre site. SATURDAY: Gas engine & tractor auction starting 10am. (608) 381-0630 (auction & consignments), (608) 393-3021 (swap meet); www.badgersteamandgas.com

MELROSE PARK, IL: Swap-O-Rama, 7am-2pm outdoors at 4600 W. Lake St. Admission: Free (708)344-7300

(Continued on Page 16)



60th ANNUAL! **Marigold Days**
Antique & Flea Market
Sat. & Sun. SEPT. 6 & 7, 2025
Located outdoors in Riverside Park • Mantorville, MN
(15 miles W. of Rochester) • ANTIQUE DEALERS WANTED
For more information contact: Marigold Days Antique Show,
P.O. Box 202, Mantorville, MN 55955 • 612-940-3107
marigoldvendor@gmail.com • www.MarigoldDays.com



Upcoming Show! **FOND DU LAC LIONS**
FLEA MARKET
Sunday, September 14th, 2025
8am-2pm • Fond du Lac Co. (WI) Fairgrounds
Collectibles - Crafts - Rummage
Merchandise - Cottage Businesses
ALL VENDORS WELCOME - INDOOR & OUTDOOR BOOTHS
920-204-6864 • fonddulacions.org

CALENDAR OF EVENTS: Shows, Flea Markets & More!

****WHAT CHEER, IA:** 49th Annual What Cheer Flea Market, at the Keokuk County Fairgrounds, 13061 170th St.; I-80, exit 201, 20 miles south on Hwy. 21. Open 7:00am. Early Bird Thursday admission: \$6.00; Adm: \$4.00 Fri/Sat; free on Sunday. www.whatcheerfleamarket.com. (319) 404-4066; Facebook: What Cheer Flea Market.

SATURDAY, MAY 3

ADAMS, WI: 45th Season Adams Flea & Farm Market. 556 S. Main St., Hwy. 13-S, by the railroad tracks. Indoor/Outdoor. Farmer's market area. Free admission. 8:00am-4:00pm (608) 403-5283

ADAMS, WI: Polish Flea Market, 2151 State Hwy. 13. Open 8:00-11:00 am. Free Admission & parking. (608) 403-1133

ALSIP, IL: Tri-State Swap-O-Rama, 7am-4pm indoors/outdoors at 4350 West 129th St. Admission: adults \$3.00; seniors \$2.00. (708)344-7300

****BARABOO, WI:** 27th Annual Badger Steam & Gas Engine Club Spring Swap Meet, Flea Market & Auction, S3347 Sand Rd. off Hwy. 33 West, 4 miles north of Baraboo. 7am-5pm daily. Free Admission, Free Parking. Flea/Swap meet is all 3 days. Over 600 vendor sites available on 5+ acre site. SATURDAY: Gas engine & tractor auction starting 10am. (608) 381-0630 (auction & consignments), (608) 393-3021 (swap meet); www.badgersteamandgas.com

BELOIT, WI: Downtown Beloit Farmers' Market, 8am-1pm, Downtown Beloit Association, State Street, Grand Avenue & Mill Street Parking Lot.

CALEDONIA, WI: 7 Mile Fair flea market. Indoor/Outdoor 9am-5pm. Admission: \$3 for 12 & up; \$1.00 Seniors. 2720 W. 7 Mile Rd. www.7milefair.com

CHICAGO, IL: Swap-O-Rama, 7am-4pm Indoors/Outdoors at 4200 S. Ashland Ave. Admission: adults \$3.00; seniors \$2.00 (708)344-7300

DAVISBURG, MI: Michigan Antique & Collectible Festival, Springfield Oaks County Park, 12451 Andersonville Rd. Sat 8-6, Sun 9-4. 800 to 1000 quality dealers on 80 acres and in 7 buildings. Admission: \$10.00; Children 11 & under free. 989-687-9001; miantiquefestival.com

MELROSE PARK, IL: Swap-O-Rama, 7am-4pm indoors/outdoors at 4600 W. Lake St. Admission Adults \$3.00; Seniors \$2.00. (708)344-7300

NEW RICHMOND, WI: Heritage Center Barn Flea Market, 1100 Heritage Dr. Wed, 8-2 & 5-7; Saturdays: 8am-2pm; Sundays: 8-2. 90+yr-old Dairy Barn filled with treasures. Inventory changes weekly. 715-246-3276; nrheritagecenter.org

ONALASKA, WI: Old Style Chapter's Gottlieb Tolstya Memorial Beer & Brewery Collectibles Show at Omni Center, 255 Riders Club. Breweriana show filled with local & all brands of cans, trays, signs, bottles & more. Free appraisals. Admission: \$4.00. Early Bird admission available for \$15 at 8:00am. (608) 780-6630; (608) 792-9782; info@oldstylechapter.com

****PRINCETON, WI:** 50th Anniversary Famous Princeton Flea Market! Tree-shaded city park, Hwy. 23/73 (S. Fulton St.). Open at 6am-1pm for vendors and customers. Free admission & parking. Food stand on site. www.princetonwi.com

ST. CHARLES, IL: Kane County Antique Flea Market, Kane County Fairgrounds at 525 S. Randall Road. Up to 400 dealers. Sat 12:00-5:00 pm.; Sun 7-4. Adm: Adults \$6.00; children under 12 free with adult. Free parking. www.kane-countyfleamarket.com. 630-377-2252; 630-708-8911

TOMAHAWK, WI: Farm & Flea Market, Tomahawk's Qualheim's TrueValue parking lot. 79 Hometown Drive, just north of Tomahawk on the corner of Hwy A an A. 8am-2pm. Facebook: Tomahawk Farm & Flea Market

****UNION GROVE, WI:** Open Air Wisconsin Flea Market. Racine County Fairgrounds, 19805 Durand Ave, Union Grove, WI 53182. Antiques, collectibles, crafts, vintage, produce, gardening, new & old, advertising, furniture, & more! Admission: \$2. Free parking. 7am to 3pm. (715) 526-9769 www.zurkopromotions.com

WAUKESHA, WI: Waukesha Art Crawl featuring numerous galleries, gift shops and more in the downtown area. 2pm-8pm. Presented by Waukesha West End Artists. Flyer and map available at: www.waukeshaart.com

WAUKESHA, WI: Waukesha Farmer's Market, in downtown Waukesha, in the Waukesha State Bank employee parking lot. 8am to noon. Locally grown in-season produce and flowers, plus bakery canned goods and foods. Facebook: Waukesha Farmers' Market.

****WHAT CHEER, IA:** 49th Annual What Cheer Flea Market, at the Keokuk County Fairgrounds, 13061 170th St.; I-80, exit 201, 20 miles south on Hwy. 21. Open 7:00am. Early Bird Thursday admission: \$6.00; Adm: \$4.00 Fri/Sat; free on Sunday. www.whatcheerfleamarket.com. (319) 404-4066; Facebook: What Cheer Flea Market.

SUNDAY, MAY 4

ADAMS, WI: 45th Season Adams Flea & Farm Market. 556 S. Main St., Hwy. 13-S, by the railroad tracks. Indoor/Outdoor. Farmer's market area. Free admission. 8:00am-4:00pm (608) 403-5283

ADAMS, WI: Polish Flea Market, 2151 State Hwy. 13. Open 8:00-11:00 am. Free Admission & parking. (608) 403-1133

ALSIP, IL: Tri-State Swap-O-Rama, 7am-4pm indoors/outdoors at 4350 West 129th St. Admission: adults \$3.00; seniors \$2.00. (708)344-7300

****BARABOO, WI:** 27th Annual Badger Steam & Gas Engine Club Spring Swap Meet, Flea Market & Auction, S3347 Sand Rd. off Hwy. 33 West, 4 miles north of Baraboo. 7am-5pm daily. Free Admission, Free Parking. Flea/Swap meet is all 3 days. Over 600 vendor sites available on 5+ acre site. SATURDAY: Gas engine & tractor auction starting 10am. (608) 381-0630 (auction & consignments), (608) 393-3021 (swap meet); www.badgersteamandgas.com

CALEDONIA, WI: 7 Mile Fair flea market. Indoor/Outdoor 9am-5pm. Admission: \$3 for 12 & up; \$1.00 Seniors. 2720 W. 7 Mile Rd. www.7milefair.com

CHICAGO, IL: Swap-O-Rama, 7am-4pm Indoors/Outdoors at 4200 S. Ashland Ave. Admission: adults \$3.00; seniors \$2.00 (708)344-7300

DAVISBURG, MI: Michigan Antique & Collectible Festival, Springfield Oaks County Park, 12451 Andersonville Rd. Sat 8-6, Sun 9-4. 800 to 1000 quality dealers on 80 acres and in 7 buildings. Admission: \$10.00; Children 11 & under free. 989-687-9001; miantiquefestival.com

****JEFFERSON, WI:** Jefferson Bargain Fair Flea Market & Craft Fair. Jefferson Speedway grounds, Hwy. 18; 6 miles W. of Jefferson. 6:30am-2pm. Free Admission. (920)648-6407 or 648-2705

MELROSE PARK, IL: Swap-O-Rama, 7am-4pm indoors/outdoors at 4600 W. Lake St. Admission Adults \$3.00; Seniors \$2.00. (708)344-7300

ROSEMONT, IL: Wolff's Flea Market, Allstate Arena, 6920 N. Mannheim. 6am-2pm. Admission: \$3; seniors & children 6-12, \$2. Early Bird before 6am is \$5. Check for updates on Facebook or www.wolffs.com.

ST. CHARLES, IL: Kane County Antique Flea Market, Kane County Fairgrounds at 525 S. Randall Road. Up to 400 dealers. Sat 12:00-5:00 pm.; Sun 7-4. Adm: Adults \$6.00; children under 12 free with adult. Free parking. www.kane-countyfleamarket.com. 630-377-2252; 630-708-8911

ST. PAUL, MN: 49th Northland Antique Doll, Toy, & Advertising Show, Progress Center, MN State Fairgrounds, 1265 Snelling Ave. N, St. Paul, MN. 9am-3pm. Admission: \$7.00; children under 12 free. Contact Bob Mannella, (763) 560-4290

****SHAWANO, WI:** Shawano Flea Market, 55th year, featuring more than 150 vendors at the Shawano Co. Fairgrounds, 990 E. Green Bay St. Antiques, Collectibles, Crafts, Vintage, Mid Century Modern, Gardening, New & Old, Advertising, Old Toys, & More. 7:00am-4:00pm. Adm: \$2.00. Early buyers before 7am are \$10. (715) 526-9769. www.zurkopromotions.com

****WAUKESHA (MILWAUKEE), WI:** Milwaukee Miniature Motors, Model Car Swap Meet & Racing Memorabilia; 1000 Northview Rd., Waukesha County Expo Center, Forum Building. 10am-2pm. Admission: \$10.00 adults; Under 12 free with adult. 7:30 am Preview Admission: \$25.00. (262) 366-1314; www.uniqueeventsshow.com

****WHAT CHEER, IA:** 49th Annual What Cheer Flea Market, at the Keokuk County Fairgrounds, 13061 170th St.; I-80, exit 201, 20 miles south on Hwy. 21. Open 7:00am. Early Bird Thursday admission: \$6.00; Adm: \$4.00 Fri/Sat; free on Sunday. www.whatcheerfleamarket.com. (319) 404-4066; Facebook: What Cheer Flea Market.

WILMOT, WI: Wilmot Flea Market, at the Kenosha County Fairgrounds, 30820 111th St. 7am-2pm. Admission: Adults \$2.00; Seniors & kids 6-14 \$1.00; kids 5 & under free. Free parking. (262) 716-5716; wilmotfleamarket.net

MONDAY, MAY 5

ST. GERMAIN, WI: Annual St. Germain Fire Department Association Flea Market & Craft Show, St. Germain Community Park, Hwy. 70 & 155. 8am-3pm. Free admission & parking. 715-891-7333

TUESDAY, MAY 6

CHICAGO, IL: Swap-O-Rama, 7am-2pm outdoors at 4200 S. Ashland Ave. Admission: adults \$1.00; seniors 50¢ (708)344-7300

SHIPSHEWANA, IND: Shishewana Flea Market, 8am-4pm. 345 S. Van Buren St. Outdoor, up to 700 vendors. Free admission; parking \$5. www.shipshewanafleamarket.com

WEDNESDAY, MAY 7

ADAMS, WI: Polish Flea Market's Farmers Market Wednesday, 2151 State Hwy. 13. Open 11:00-4:00. (608) 403-1133

ALSIP, IL: Tri-State Swap-O-Rama, 7am-2pm outdoors at 4350 West 129th St. Admission: adults \$1.00; seniors 50¢. (708)344-7300

NEW RICHMOND, WI: Heritage Center Barn Flea Market, 1100 Heritage Dr. Wed, 8-2 & 5-7; Saturdays: 8am-2pm; Sundays: 8-2. 90+yr-old Dairy Barn filled with treasures. Inventory changes weekly. 715-246-3276; nrheritagecenter.org

SHIPSHEWANA, IND: Shishewana Flea Market, 8am-4pm. 345 S. Van Buren St. Outdoor, up to 700 vendors. Free admission; parking \$5. www.shipshewanafleamarket.com

SHIPSHEWANA, IND: Weekly Misc. & Antique Auction, 9AM start. 345 S Van Buren St. "Shishewana Auction Misc. & Antique Building." Live auction with 6-10 Auctioneers selling simultaneously. shipshewanatradingplace.com; (260) 768-4129.

THURSDAY, MAY 8

CHICAGO, IL: Swap-O-Rama, 7am-3pm outdoors at 4200 S. Ashland Ave. Admission: adults \$1.00; seniors 50¢ (708)344-7300

FRIDAY, MAY 9

MELROSE PARK, IL: Swap-O-Rama, 7am-2pm outdoors at 4600 W. Lake St. Admission: Free (708)344-7300

****ROCHESTER, MN:** 53rd Olmsted Co. Gold Rush Antique Show & Flea Market, Graham Park, Olmsted County Fairgrounds, 1570 Fairgrounds Ave. SE. Graham Arenas 1, 2 & 3. Fri-Sat 8am-6pm; Sun 8-2. Free parking; admission \$10.00. 641-832-2700 or 507-269-1473; www.townsend-shows.com; Facebook: Townsend Shows.

SATURDAY, MAY 10

ADAMS, WI: 45th Season Adams Flea & Farm Market. 556 S. Main St., Hwy. 13-S, by the railroad tracks. Indoor/Outdoor. Farmer's market area. Free admission. 8:00am-4:00pm (608) 403-5283

ADAMS, WI: Polish Flea Market, 2151 State Hwy. 13. Open 8:00-11:00 am. Free Admission & parking. (608) 403-1133

ALSIP, IL: Tri-State Swap-O-Rama, 7am-4pm indoors/outdoors at 4350 West 129th St. Admission: adults \$3.00; seniors \$2.00. (708)344-7300

BARABOO, WI: Fall Fair on the Square, downtown Baraboo. Nearly 200 artists and crafters, photographers, food, live entertainment, farmers market and kids activities. Shops and restaurants will be open with outdoor seating available on the courthouse lawn. 9am-4pm. downtownbaraboo.com

BELOIT, WI: Downtown Beloit Farmers' Market, 8am-1pm, Downtown Beloit Association, State Street, Grand Avenue & Mill Street Parking Lot.

CALEDONIA, WI: 7 Mile Fair flea market. Indoor/Outdoor 9am-5pm. Admission: \$3 for 12 & up; \$1.00 Seniors. 2720 W. 7 Mile Rd. www.7milefair.com

CHICAGO, IL: Swap-O-Rama, 7am-4pm Indoors/Outdoors at 4200 S. Ashland Ave. Admission: adults \$3.00; seniors \$2.00 (708)344-7300

GERMANTOWN, WI: Second Sunday Flea Market at corner of Pilgrim Rd. & Fond du Lac Ave., W156N11500 Pilgrim Rd., behind Pilgrim Antique Mall. 8:00am-3:00pm. Inside vendors (& outside, weather permitting). Admission: \$1.00. Info: Randy at 816-536-9089.

KENOSHA, WI: Kenosha Public Market outdoors at 625 52nd St. 9:00-2:00. Vendors come with a variety of fresh local products including fruits, vegetables, meats, prepared foods, handmade gifts & more. kenoshapublicmarket.com

MELROSE PARK, IL: Swap-O-Rama, 7am-4pm indoors/outdoors at 4600 W. Lake St. Admission Adults \$3.00; Seniors \$2.00. (708)344-7300

MERRILL, WI: Merrill Wisconsin Flea Market at Merrill Fairgrounds, formerly known as Lincoln County Fairgrounds, 2001 E. 2nd St. 7am-4pm. Admission \$2; kids 12 & under free with adult. Free parking. New vendors welcome. (715) 526-9769; www.zurkopromotions.com

****PRINCETON, WI:** 50th Anniversary Famous Princeton Flea Market! Tree-shaded city park, Hwy. 23/73 (S. Fulton St.). Open at 6am-1pm for vendors and customers. Free admission & parking. Food stand on site. www.princetonwi.com

****ROCHESTER, MN:** 53rd Olmsted Co. Gold Rush Antique Show & Flea Market, Graham Park, Olmsted County Fairgrounds, 1570 Fairgrounds Ave. SE. Graham Arenas 1, 2 & 3. Fri-Sat 8am-6pm; Sun 8-2. Free parking; admission \$10.00. 641-832-2700 or 507-269-1473; www.townsend-shows.com; Facebook: Townsend Shows.

TOMAHAWK, WI: Farm & Flea Market, Tomahawk's Qualheim's TrueValue parking lot. 79 Hometown Drive, just north of Tomahawk on the corner of Hwy A an A. 8am-2pm. Facebook: Tomahawk Farm & Flea Market

WAUKESHA, WI: Waukesha Farmer's Market, in downtown Waukesha, in the Waukesha State Bank employee parking lot. 8am to noon. Locally grown in-season produce and flowers, plus bakery canned goods and foods. Facebook: Waukesha Farmers' Market.

SUNDAY, MAY 11



MOTHER'S DAY

ADAMS, WI: 45th Season Adams Flea & Farm Market. 556 S. Main St., Hwy. 13-S, by the railroad tracks. Indoor/Outdoor. Farmer's market area. Free admission. 8:00am-4:00pm (608) 403-5283

ADAMS, WI: Polish Flea Market, 2151 State Hwy. 13. Open 8:00-11:00 am. Free Admission & parking. (608) 403-1133

ALSIP, IL: Tri-State Swap-O-Rama, 7am-4pm indoors/outdoors at 4350 West 129th St. Admission: adults \$3.00; seniors \$2.00. (708)344-7300

CALEDONIA, WI: 7 Mile Fair flea market. Indoor/Outdoor 9am-5pm. Admission: \$3 for 12 & up; \$1.00 Seniors. 2720 W. 7 Mile Rd. www.7milefair.com

CHICAGO, IL: Swap-O-Rama, 7am-4pm Indoors/Outdoors at 4200 S. Ashland Ave. Admission: adults \$3.00; seniors \$2.00 (708)344-7300

****JEFFERSON, WI:** Jefferson Bargain Fair Flea Market & Craft Fair. Jefferson Speedway grounds, Hwy. 18; 6 miles W. of Jefferson. 6:30am-2pm. Free Admission. (920)648-6407 or 648-2705

LICHTFIELD, IL: Lichtfield Pickers Flea & Artist Market, downtown Lichtfield, 400 N. State St. 8am-2pm. Free Admission. 217-324-8147 or e-mail: tourism@cityoflichtfieldil.com.

MELROSE PARK, IL: Swap-O-Rama, 7am-4pm indoors/outdoors at 4600 W. Lake St. Admission Adults \$3.00; Seniors \$2.00. (708)344-7300

CALENDAR OF EVENTS: Shows, Flea Markets & More!

PEORIA, IL: Central Illinois Flea Market at the Peoria Speedway, 3520 Farmington Rd. Admission: \$3. Open 9:00am-3:00pm. 200+ spaces available. (309) 339-4471; peoriafleamarket.com

ROSEMONT, IL: Wolff's Flea Market, Allstate Arena, 6920 N. Mannheim. 6am-2pm. Admission: \$3; seniors & children 6-12, \$2. Early Bird before 6am is \$5. Check for updates on Facebook or www.wolffs.com.

****ROCHESTER, MN:** 53rd Olmsted Co. Gold Rush Antique Show & Flea Market, Graham Park, Olmsted County Fairgrounds, 1570 Fairgrounds Ave. SE. Graham Arenas 1, 2 & 3. Fri-Sat 8am-6pm; Sun 8-2. Free parking; admission \$10.00. 641-832-2700 or 507-269-1473; www.townsend-shows.com; Facebook: Townsend Shows.

SANDWICH, IL: Sunday at Sandwich Antique Flea Market, Sandwich Fairgrounds, 1401 Suydam Rd. 8am-3pm. Admission: \$5.00; children 12 & under free. Early Bird \$10 from 7:00-8:00am. Monthly market of quality antiques, collectibles, repurposed. 630-983-8039

****SHAWANO, WI:** Shawano Flea Market, 55th year, featuring more than 150 vendors at the Shawano Co. Fairgrounds, 990 E. Green Bay St. Antiques, Collectibles, Crafts, Vintage, Mid Century Modern, Gardening, New & Old, Advertising, Old Toys, & More. 7:00am-4:00pm. Adm: \$2.00. Early buyers before 7am are \$10. (715) 526-9769. www.zurkopromotions.com

****SHAWANO, WI:** Shawano Flea Market, 55th year, featuring more than 150 vendors at the Shawano Co. Fairgrounds, 990 E. Green Bay St. Antiques, Collectibles, Crafts, Vintage, Mid Century Modern, Gardening, New & Old, Advertising, Old Toys, & More. 7:00am-4:00pm. Adm: \$2.00. Early buyers before 7am are \$10. (715) 526-9769. www.zurkopromotions.com

WILMOT, WI: Wilmot Flea Market, at the Kenosha County Fairgrounds, 30820 111th St. 7am-2pm. Admission: Adults \$2.00; Seniors & kids 6-14 \$1.00; kids 5 & under free. Free parking. (262) 716-5716; wilmotfleamarket.net

MONDAY, MAY 12

ST. GERMAIN, WI: Annual St. Germain Fire Department Association Flea Market & Craft Show, St. Germain Community Park, Hwy. 70 & 155. 8am-3pm. Free admission & parking. 715-891-7333

TUESDAY, MAY 13

CHICAGO, IL: Swap-O-Rama, 7am-2pm outdoors at 4200 S. Ashland Ave. Admission: adults \$1.00; seniors 50¢ (708)344-7300

SHIPSHEWANA, IND: Shiphewana Flea Market, 8am-4pm. 345 S. Van Buren St. Outdoor, up to 700 vendors. Free admission; parking \$5. www.shipshewanafleamarket.com

WEDNESDAY, MAY 14

ADAMS, WI: Polish Flea Market's Farmers Market Wednesday, 2151 State Hwy. 13. Open 11:00-4:00. (608) 403-1133

ALSIP, IL: Tri-State Swap-O-Rama, 7am-2pm outdoors at 4350 West 129th St. Admission: adults \$1.00; seniors 50¢. (708)344-7300

EAGLE RIVER, WI: Wednesday Farmers' Market, Mill St & Michigan St. Hwy 45N, north of the bridge. 8:30am-1:00pm. (715) 477-0645

NEW RICHMOND, WI: Heritage Center Barn Flea Market, 1100 Heritage Dr. Wed, 8-2 & 5-7; Saturdays: 8am-2pm; Sundays: 8-2. 90+yr-old Dairy Barn filled with treasures. Inventory changes weekly. 715-246-3276; nrheritagecenter.org

SHIPSHEWANA, IND: Shiphewana Flea Market, 8am-4pm. 345 S. Van Buren St. Outdoor, up to 700 vendors. Free admission; parking \$5. www.shipshewanafleamarket.com

SHIPSHEWANA, IND: Weekly Misc. & Antique Auction, 9AM start. 345 S Van Buren St. "Shiphewana Auction Misc. & Antique Building." Live auction with 6-10 Auctioneers selling simultaneously. shipshewanatradingplace.com; (260) 768-4129.

THURSDAY, MAY 15

APPLE VALLEY, MN: Dutch Door Vinage, 7570 W. 147th St., 5 miles south of Mall of America, Thurs 9am-7pm, Fri 9-6, Sat 9-5, Sun 11-4. www.hauptantiek.com (612) 860-5660. COTTAGE RENEWAL theme.

CHICAGO, IL: Swap-O-Rama, 7am-3pm outdoors at 4200 S. Ashland Ave. Admission: adults \$1.00; seniors 50¢ (708)344-7300

FRIDAY, MAY 16

APPLE VALLEY, MN: Dutch Door Vinage, 7570 W. 147th St., 5 miles south of Mall of America, Thurs 9am-7pm, Fri 9-6, Sat 9-5, Sun 11-4. www.hauptantiek.com (612) 860-5660. COTTAGE RENEWAL theme.

MELROSE PARK, IL: Swap-O-Rama, 7am-2pm outdoors at 4600 W. Lake St. Admission: Free (708)344-7300

MINOCQUA, WI: Minocqua Farmers Market, 408 Chicago St., Minocqua Visitor's Bureau and Chamber of Commerce. 8am-1pm. (715) 356-5266. www.minocqua.org.

SATURDAY, MAY 17

ADAMS, WI: 45th Season Adams Flea & Farm Market. 556 S. Main St., Hwy. 13-S, by the railroad tracks. Indoor/Outdoor. Farmer's market area. Free admission. 8:00am-4:00pm (608) 403-5283

ADAMS, WI: Polish Flea Market, 2151 State Hwy. 13. Open 8:00-11:00 am. Free Admission & parking. (608) 403-1133

ALSIP, IL: Tri-State Swap-O-Rama, 7am-4pm indoors/outdoors at 4350 West 129th St. Admission: adults \$3.00; seniors \$2.00. (708)344-7300

APPLE VALLEY, MN: Dutch Door Vinage, 7570 W. 147th St., 5 miles south of Mall of America, Thurs 9am-7pm, Fri 9-6, Sat 9-5, Sun 11-4. www.hauptantiek.com (612) 860-5660. COTTAGE RENEWAL theme.

BEAVER DAM, WI: Craft/Flea Market, Dodge County Fairgrounds, Hwy. 33, 3 miles east of Beaver Dam. Open 8am-2pm for customers. Free admission & parking. Rain or shine. dodgecountyfairgrounds.com

BELOIT, WI: Downtown Beloit Farmers' Market, 8am-1pm, Downtown Beloit Association, State Street, Grand Avenue & Mill Street Parking Lot.

CALEDONIA, WI: 7 Mile Fair flea market. Indoor/Outdoor 9am-5pm. Admission: \$3 for 12 & up; \$1.00 Seniors. 2720 W. 7 Mile Rd. www.7milefair.com

CHICAGO, IL: Swap-O-Rama, 7am-4pm Indoors/Outdoors at 4200 S. Ashland Ave. Admission: adults \$3.00; seniors \$2.00 (708)344-7300

****KALAMAZOO, MI:** Kalamazoo Antique & Collectible Toy Show, Kalamazoo County Expo Center, 2900 Lake St. Nearly 50,000 square feet of toys from over 200 vendors around the country. Admission: \$10.00 - Saturday 9am-2pm. Early Admission: \$40.00 Friday from 3-7pm & Saturday at 7am. (262) 366-1314; www.uniqueeventsshow.com

KENOSHA, WI: Kenosha Public Market outdoors at 625 52nd St. 9:00-2:00. Vendors come with a variety of fresh local products including fruits, vegetables, meats, prepared foods, handmade gifts & more. kenoshapublicmarket.com

MELROSE PARK, IL: Swap-O-Rama, 7am-4pm indoors/outdoors at 4600 W. Lake St. Admission Adults \$3.00; Seniors \$2.00. (708)344-7300

OSHKOSH, WI: Festival of Spring, Paine Art Center, 1600 block of Congress Ave. 9am-4pm. Featuring the Paine Art Center's annual plant sale plus vendors of original art, fine crafts & more, food & entertainment. Free admission to art fair and to the Paine museum on Algoma Blvd. www.thepaine.org

PECATONICA, IL: Semi-Annual The "Pec Thing" Antique Market. Winnebago Co. Fairgrounds, 500 W. 1st St. Sat 8am-5pm; Sun 8am-4pm. Admission: \$5.00; kids 12 & under free. Over 500 sellers, indoor-outdoor. (815)239-1641. www.winnebagoountyfair.com/pec-thing/

****PRINCETON, WI:** 50th Anniversary Famous Princeton Flea Market! Tree-shaded city park, Hwy. 23/73 (S. Fulton St.). Open at 6am-1pm for vendors and customers. Free admission & parking. Food stand on site. www.princetonwi.com

SHIPSHEWANA, IND: Shiphewana Swap Meet, 345 S. Van Buren St. Daylight to 1:00pm. All kinds flea market items: fowl, poultry, small animals, pets, produce, baked goods, plants, antiques & more. Parking: \$5.00. Info: 260-768-4129; shipshewanatradingplace.com

SIoux CITY, IA: Sioux City Comic & Toy Show, Southern Hills Mall, 4400 Sergeant Rd. STE 317. Free event. Vendors spread throughout the mall dealing in animé, vintage toys, posters, pop vinyls, original art, video games & more. Open during normal mall hours. quadcitycon.com

SUN PRAIRIE, WI: Makers Market at Angell Park, 315 Park St.. 75+ local vendors. 10am-3pm. Admission \$5.00; kids 12 & under free. www.makersmarket.com

TOMAHAWK, WI: Farm & Flea Market, Tomahawk's Qualheim's TrueValue parking lot. 79 Hometown Drive, just north of Tomahawk on the corner of Hwy A an A. 8am-2pm. Facebook: Tomahawk Farm & Flea Market

WAUKESHA, WI: Waukesha Farmer's Market, in downtown Waukesha, in the Waukesha State Bank employee parking lot. 8am to noon. Locally grown in-season produce and flowers, plus bakery canned goods and foods. Facebook: Waukesha Farmers' Market.

SUNDAY, MAY 18

ADAMS, WI: 45th Season Adams Flea & Farm Market. 556 S. Main St., Hwy. 13-S, by the railroad tracks. Indoor/Outdoor. Farmer's market area. Free admission. 8:00am-4:00pm (608) 403-5283

ADAMS, WI: Polish Flea Market, 2151 State Hwy. 13. Open 8:00-11:00 am. Free Admission & parking. (608) 403-1133

ALSIP, IL: Tri-State Swap-O-Rama, 7am-4pm indoors/outdoors at 4350 West 129th St. Admission: adults \$3.00; seniors \$2.00. (708)344-7300

APPLE VALLEY, MN: Dutch Door Vinage, 7570 W. 147th St., 5 miles south of Mall of America, Thurs 9am-7pm, Fri 9-6, Sat 9-5, Sun 11-4. www.hauptantiek.com (612) 860-5660. COTTAGE RENEWAL theme.

BLOOMINGTON, IL: 3rd Sunday Market, Interstate Center, 1106 Interstate Dr. 8am-4pm Admission: \$6; 13 & under free. Indoor/outdoor sale features more than 450 top dealers from 17 states. 217-202-2847

CALEDONIA, WI: 7 Mile Fair flea market. Indoor/Outdoor 9am-5pm. Admission: \$3 for 12 & up; \$1.00 Seniors. 2720 W. 7 Mile Rd. www.7milefair.com

CHICAGO, IL: Swap-O-Rama, 7am-4pm Indoors/Outdoors at 4200 S. Ashland Ave. Admission: adults \$3.00; seniors \$2.00 (708)344-7300

****ELKHORN, WI:** 44th Season Antique & Flea Market. Over 500 inside & outside dealers at the Walworth County Fairgrounds, Hwy. 11 (411 E. Court St.). Open 7am-3pm. Admission: \$5.00; free parking, great food. (414) 525-0820; elkhornantiquefleamarket.com

****JEFFERSON, WI:** Jefferson Bargain Fair Flea Market & Craft Fair. Jefferson Speedway grounds, Hwy. 18; 6 miles W. of Jefferson. 6:30am-2pm. Free Admission. (920)648-6407 or 648-2705

MELROSE PARK, IL: Swap-O-Rama, 7am-4pm indoors/outdoors at 4600 W. Lake St. Admission Adults \$3.00; Seniors \$2.00. (708)344-7300

MILWAUKEE (NEW BERLIN), WI: Spring Milwaukee Postcard Show & Sale, New Berlin Entertainment Center, 16000 W. Cleveland Ave.; Exit I-894 or I-94. 9:00-3:00. Featuring quality dealers of postcards, papertiques, ephemera, uniques. Admission: \$3.00. 608-877-0538

PECATONICA, IL: Semi-Annual The "Pec Thing" Antique Market. Winnebago Co. Fairgrounds, 500 W. 1st St. Sat 8am-5pm; Sun 8am-4pm. Admission: \$5.00; kids 12 & under free. Over 500 sellers, indoor-outdoor. (815)239-1641. www.winnebagoountyfair.com/pec-thing/

ROSEMONT, IL: Wolff's Flea Market, Allstate Arena, 6920 N. Mannheim. 6am-2pm. Admission: \$3; seniors & children 6-12, \$2. Early Bird before 6am is \$5. Check for updates on Facebook or www.wolffs.com.

****SHAWANO, WI:** Shawano Flea Market, 55th year, featuring more than 150 vendors at the Shawano Co. Fairgrounds, 990 E. Green Bay St. Antiques, Collectibles, Crafts, Vintage, Mid Century Modern, Gardening, New & Old, Advertising, Old Toys, & More. 7:00am-4:00pm. Adm: \$2.00. Early buyers before 7am are \$10. (715) 526-9769. www.zurkopromotions.com

SIoux CITY, IA: Sioux City Comic & Toy Show, Southern Hills Mall, 4400 Sergeant Rd. STE 317. Free event. Vendors spread throughout the mall dealing in animé, vintage toys, posters, pop vinyls, original art, video games & more. Open during normal mall hours. quadcitycon.com

WILMOT, WI: Wilmot Flea Market, at the Kenosha County Fairgrounds, 30820 111th St. 7am-2pm. Admission: Adults \$2.00; Seniors & kids 6-14 \$1.00; kids 5 & under free. Free parking. (262) 716-5716; wilmotfleamarket.net

MONDAY, MAY 19

ST. GERMAIN, WI: Annual St. Germain Fire Department Association Flea Market & Craft Show, St. Germain Community Park, Hwy. 70 & 155. 8am-3pm. Free admission & parking. 715-891-7333

TUESDAY, MAY 20

CHICAGO, IL: Swap-O-Rama, 7am-2pm outdoors at 4200 S. Ashland Ave. Admission: adults \$1.00; seniors 50¢ (708)344-7300

SHIPSHEWANA, IND: Shiphewana Flea Market, 8am-4pm. 345 S. Van Buren St. Outdoor, up to 700 vendors. Free admission; parking \$5. www.shipshewanafleamarket.com

WEDNESDAY, MAY 21

ADAMS, WI: Polish Flea Market's Farmers Market Wednesday, 2151 State Hwy. 13. Open 11:00-4:00. (608) 403-1133

ALSIP, IL: Tri-State Swap-O-Rama, 7am-2pm outdoors at 4350 West 129th St. Admission: adults \$1.00; seniors 50¢. (708)344-7300

EAGLE RIVER, WI: Wednesday Farmers' Market, Mill St & Michigan St. Hwy 45N, north of the bridge. 8:30am-1:00pm. (715) 477-0645

NEW RICHMOND, WI: Heritage Center Barn Flea Market, 1100 Heritage Dr. Wed, 8-2 & 5-7; Saturdays: 8am-2pm; Sundays: 8-2. 90+yr-old Dairy Barn filled with treasures. Inventory changes weekly. 715-246-3276; nrheritagecenter.org

SHIPSHEWANA, IND: Shiphewana Flea Market, 8am-4pm. 345 S. Van Buren St. Outdoor, up to 700 vendors. Free admission; parking \$5. www.shipshewanafleamarket.com

SHIPSHEWANA, IND: Weekly Misc. & Antique Auction, 9AM start. 345 S Van Buren St. "Shiphewana Auction Misc. & Antique Building." Live auction with 6-10 Auctioneers selling simultaneously. shipshewanatradingplace.com; (260) 768-4129.

THURSDAY, MAY 22

CHICAGO, IL: Swap-O-Rama, 7am-3pm outdoors at 4200 S. Ashland Ave. Admission: adults \$1.00; seniors 50¢ (708)344-7300

FRIDAY, MAY 23

****ANTIGO, WI:** Antique & Flea Market, *NEW LOCATION: Downtown Antigo. 9am-4pm. Free Admission. (715) 526-9769; www.zurkopromotions.com

MELROSE PARK, IL: Swap-O-Rama, 7am-2pm outdoors at 4600 W. Lake St. Admission: Free (708)344-7300

MINOCQUA, WI: Minocqua Farmers Market, 408 Chicago St., Minocqua Visitor's Bureau and Chamber of Commerce. 8am-1pm. (715) 356-5266. www.minocqua.org.

SATURDAY, MAY 24

ADAMS, WI: 45th Season Adams Flea & Farm Market. 556 S. Main St., Hwy. 13-S, by the railroad tracks. Indoor/Outdoor. Farmer's market area. Free admission. 8:00am-4:00pm (608) 403-5283

ADAMS, WI: Polish Flea Market, 2151 State Hwy. 13. Open 8:00-11:00 am. Free Admission & parking. (608) 403-1133

ALSIP, IL: Tri-State Swap-O-Rama, 7am-4pm indoors/outdoors at 4350 West 129th St. Admission: adults \$3.00; seniors \$2.00. (708)344-7300

BELOIT, WI: Downtown Beloit Farmers' Market, 8am-1pm, Downtown Beloit Association, State Street, Grand Avenue & Mill Street Parking Lot.

(Continued on Page 18)

CALENDAR OF EVENTS: Shows, Flea Markets & More!

CALEDONIA, WI: 7 Mile Fair flea market. Indoor/Outdoor 9am-5pm. Admission: \$3 for 12 & up; \$1.00 Seniors. 2720 W. 7 Mile Rd. www.7milefair.com

CHICAGO, IL: Swap-O-Rama, 7am-4pm Indoors/Outdoors at 4200 S. Ashland Ave. Admission: adults \$3.00; seniors \$2.00 (708)344-7300

CHICAGO, IL: Randolph St. Market. Historic West Loop, 1341 W. Randolph St. 10:00am-5:00pm. Art, antiques and vintage decor, ephemera, vintage and indie designer fashion and jewelry, vinyl, global goods, fancy and fun foods. Admission at the gate or see www.randolphstreetmarket.com for ticket information.

GRAFTON, IL: Riverside Flea Market at The Loading Dock, 401 E. Front St. Sat 9:00-5:00; Sun 9:00-4:00. (618) 556-7951; www.graftonloadingdock.com

KENOSHA, WI: Kenosha Public Market outdoors at 625 52nd St. 9:00-2:00. Vendors come with a variety of fresh local products including fruits, vegetables, meats, prepared foods, handmade gifts & more. kenoshapublicmarket.com

MELROSE PARK, IL: Swap-O-Rama, 7am-4pm indoors/outdoors at 4600 W. Lake St. Admission Adults \$3.00; Seniors \$2.00. (708)344-7300

OSHKOSH, WI: Quad Con Comic Book & Toy Show, Oshkosh Arena, 1212 S. Main St. 10am-5pm. Vendors from 5 states selling comics, toys, posters, anime, video games, artists, authors, & special guests. Video game tournaments, cosplay contest, and panel discussions. Admission: \$5.00 quadcitycon.com

****PRINCETON, WI:** 50th Anniversary Famous Princeton Flea Market! Tree-shaded city park, Hwy. 23/73 (S. Fulton St.). Open at 6am-1pm for vendors and customers. Free admission & parking. Food stand on site. www.princetonwi.com

TOMAHAWK, WI: Farm & Flea Market, Tomahawk's Qualheim's TrueValue parking lot. 79 Hometown Drive, just north of Tomahawk on the corner of Hwy A an A. 8am-2pm. Facebook: Tomahawk Farm & Flea Market

TREGO, WI: 6th Annual Antique Adventures Flea Market, N7340 Liesch Rd. 8am-2pm. (920) 229-0322

WAUKESHA, WI: Waukesha Farmer's Market, in downtown Waukesha, in the Waukesha State Bank employee parking lot. 8am to noon. Locally grown in-season produce and flowers, plus bakery canned goods and foods. Facebook: Waukesha Farmers' Market.

SUNDAY, MAY 25

ADAMS, WI: 45th Season Adams Flea & Farm Market. 556 S. Main St., Hwy. 13-S, by the railroad tracks. Indoor/Outdoor. Farmer's market area. Free admission. 8:00am-4:00pm (608) 403-5283

ADAMS, WI: Polish Flea Market, 2151 State Hwy. 13. Open 8:00-11:00 am. Free Admission & parking. (608) 403-1133

ALSIP, IL: Tri-State Swap-O-Rama, 7am-4pm indoors/outdoors at 4350 West 129th St. Admission: adults \$3.00; seniors \$2.00. (708)344-7300

BARABOO, WI: Baraboo Sunday Market, downtown area, on the square. Rain or shine. 10am-2pm. Vintage, Antique, Artisans, Handmade & Homegrown. 608-448-3490; www.downtownbaraboo.com

CALEDONIA, WI: 7 Mile Fair flea market. Indoor/Outdoor 9am-5pm. Admission: \$3 for 12 & up; \$1.00 Seniors. 2720 W. 7 Mile Rd. www.7milefair.com

****CEDARBURG, WI:** Cedarburg Maxwell St. Days Flea Market. Firemen's Park, W65N796 Washington Ave. 500 vendor spaces available. Antiques, collectibles, attic & basement treasures, crafters, produce, sports, old toys, rummage, family collections, vintage treasures, and much more! Open 6:00am-2:00pm. Free Admission. cedarburg-firemenspark.com or visit us on Facebook

CHICAGO, IL: Swap-O-Rama, 7am-4pm Indoors/Outdoors at 4200 S. Ashland Ave. Admission: adults \$3.00; seniors \$2.00 (708)344-7300

CHICAGO, IL: Randolph St. Market. Historic West Loop, 1341 W. Randolph St. 10:00am-5:00pm. Art, antiques and vintage decor, ephemera, vintage and indie designer fashion and jewelry, vinyl, global goods, fancy and fun foods. Admission at the gate or see www.randolphstreetmarket.com for ticket information.

EAGLE RIVER, WI: Sunday Farmers' Market, Mill St & Michigan St. Hwy 45N, north of the bridge. 10:00am-2:00pm. (715)477-0645

GRAFTON, IL: Riverside Flea Market at The Loading Dock, 401 E. Front St. Sat 9:00-5:00; Sun 9:00-4:00. (618) 556-7951; www.graftonloadingdock.com

****JEFFERSON, WI:** Jefferson Bargain Fair Flea Market & Craft Fair. Jefferson Speedway grounds, Hwy. 18; 6 miles W. of Jefferson. 6:30am-2pm. Free Admission. (920)648-6407 or 648-2705

MELROSE PARK, IL: Swap-O-Rama, 7am-4pm indoors/outdoors at 4600 W. Lake St. Admission Adults \$3.00; Seniors \$2.00. (708)344-7300

ROSEMONT, IL: Wolff's Flea Market, Allstate Arena, 6920 N. Mannheim. 6am-2pm. Admission: \$3; seniors & children 6-12, \$2. Early Bird before 6am is \$5. Check for updates on Facebook or www.wolffs.com.

****SHAWANO, WI:** Shawano Flea Market, 55th year, featuring more than 150 vendors at the Shawano Co. Fairgrounds, 990 E. Green Bay St. Antiques, Collectibles, Crafts, Vintage, Mid Century Modern, Gardening, New & Old, Advertising, Old Toys, & More. 7:00am-4:00pm. Adm: \$2.00. Early buyers before 7am are \$10. (715) 526-9769. www.zurkopromotions.com

WILMOT, WI: Wilmot Flea Market, at the Kenosha County Fairgrounds, 30820 111th St. 7am-2pm. Admission: Adults \$2.00; Seniors & kids 6-14 \$1.00; kids 5 & under free. Free parking. (262) 716-5716; wilmotfleamarket.net

MONDAY, MAY 26 MEMORIAL DAY

CALEDONIA, WI: 7 Mile Fair flea market. Indoor/Outdoor 9am-5pm. Admission: \$3 for 12 & up; \$1.00 Seniors. 2720 W. 7 Mile Rd. www.7milefair.com

COLOMA, WI: Coloma Area Historical Society Flea Market, Coloma Community Park, south of Hwy 21 on County Rd CH. 8am-3pm. Free admission. Vendor info: 414-217-5893

HAYWARD, WI: Monday Flea Market at the Hayward Sports Center, 10475 Sutliff Drive. Over 150 vendors, inside & out plus food. Antiques, collectibles, crafts, Fishing Tackle, Farmer's Market, Jewelry, Coins, Books, etc. www.haywardsportscenter.com; (715) 634-4791

ST. GERMAIN, WI: Annual St. Germain Fire Department Association Flea Market & Craft Show, St. Germain Community Park, Hwy. 70 & 155. 8am-3pm. Free admission & parking. 715-891-7333

SHIPSHEWANA, IND: Shishewana Flea Market, 8am-4pm. 345 S. Van Buren St. Outdoor, up to 700 vendors. Free admission; parking \$5. www.shipshewanafleamarket.com

TUESDAY, MAY 27

CHICAGO, IL: Swap-O-Rama, 7am-2pm outdoors at 4200 S. Ashland Ave. Admission: adults \$1.00; seniors 50¢ (708)344-7300

SHIPSHEWANA, IND: Shishewana Flea Market, 8am-4pm. 345 S. Van Buren St. Outdoor, up to 700 vendors. Free admission; parking \$5. www.shipshewanafleamarket.com

WEDNESDAY, MAY 28

ADAMS, WI: Polish Flea Market's Farmers Market Wednesday, 2151 State Hwy. 13. Open 11:00-4:00. (608) 403-1133

ALSIP, IL: Tri-State Swap-O-Rama, 7am-2pm outdoors at 4350 West 129th St. Admission: adults \$1.00; seniors 50¢. (708)344-7300

EAGLE RIVER, WI: Wednesday Farmers' Market, Mill St & Michigan St. Hwy 45N, north of the bridge. 8:30am-1:00pm. (715) 477-0645

NEW RICHMOND, WI: Heritage Center Barn Flea Market, 1100 Heritage Dr. Wed, 8-2 & 5-7; Saturdays: 8am-2pm; Sundays: 8-2. 90+yr-old Dairy Barn filled with treasures. Inventory changes weekly. 715-246-3276; nrheritagecenter.org

SHIPSHEWANA, IND: Shishewana Flea Market, 8am-4pm. 345 S. Van Buren St. Outdoor, up to 700 vendors. Free admission; parking \$5. www.shipshewanafleamarket.com

SHIPSHEWANA, IND: Shishewana Signs & Advertising & Misc. Auction, 345 S. Van Buren St. - Shishewana Auction Miscellaneous & Antique Building. 9:00 am start. Live auction with 6-10 auctioneers selling simultaneously. Weekly auction - this one will have a special section on signs & advertising items. shipshewanatradingplace.com; (260) 768-4129

THURSDAY, MAY 29

CHICAGO, IL: Swap-O-Rama, 7am-3pm outdoors at 4200 S. Ashland Ave. Admission: adults \$1.00; seniors 50¢ (708)344-7300

FRIDAY, MAY 30

GRAYSLAKE, IL: Chicagoland Antique Advertising, Slot Machine & Jukebox Show, Lake County Fairgrounds Event Center, 1060 E. Peterson Rd. Friday Early Bird Preview & Dealer Setup 7-4: \$50, Saturday 9-3: \$10. Kids free. (419) 508-3645. Ticket info at: www.chicagolandshow.com

MELROSE PARK, IL: Swap-O-Rama, 7am-2pm outdoors at 4600 W. Lake St. Admission: Free (708)344-7300

MINOCQUA, WI: Minocqua Farmers Market, 408 Chicago St., Minocqua Visitor's Bureau and Chamber of Commerce. 8am-1pm. (715) 356-5266. www.minocqua.org.

SATURDAY, MAY 31

ADAMS, WI: 45th Season Adams Flea & Farm Market. 556 S. Main St., Hwy. 13-S, by the railroad tracks. Indoor/Outdoor. Farmer's market area. Free admission. 8:00am-4:00pm (608) 403-5283

ADAMS, WI: Polish Flea Market, 2151 State Hwy. 13. Open 8:00-11:00 am. Free Admission & parking. (608) 403-1133

ALSIP, IL: Tri-State Swap-O-Rama, 7am-4pm indoors/outdoors at 4350 West 129th St. Admission: adults \$3.00; seniors \$2.00. (708)344-7300

BELOIT, WI: Downtown Beloit Farmers' Market, 8am-1pm, Downtown Beloit Association, State Street, Grand Avenue & Mill Street Parking Lot.

CALEDONIA, WI: 7 Mile Fair flea market. Indoor/Outdoor 9am-5pm. Admission: \$3 for 12 & up; \$1.00 Seniors. 2720 W. 7 Mile Rd. www.7milefair.com

CHICAGO, IL: Swap-O-Rama, 7am-4pm Indoors/Outdoors at 4200 S. Ashland Ave. Admission: adults \$3.00; seniors \$2.00 (708)344-7300

GRAYSLAKE, IL: Chicagoland Antique Advertising, Slot Machine & Jukebox Show, Lake County Fairgrounds Event Center, 1060 E. Peterson Rd. Friday Early Bird Preview & Dealer Setup 7-4: \$50, Saturday 9-3: \$10. Kids free. (419) 508-3645. Ticket info at: www.chicagolandshow.com

HUBERTUS, WI: Holy Hill Art Farm Art & Farm Market, 4958 Holy Hill Rd. (Hwy. 167), 2 miles east of Holy Hill Basilica. 9am-4pm. Admission: \$4. Unique Rustic Marketplace ~ Featuring Artists and Farmers with art, vintage & locally made and grown products. Food & beverages available. www.holyhillartfarm.com; 262-224-6153

KENOSHA, WI: Kenosha Public Market outdoors at 625 52nd St. 9:00-2:00. Vendors come with a variety of fresh local products including fruits, vegetables, meats, prepared foods, handmade gifts & more. kenoshapublicmarket.com

MELROSE PARK, IL: Swap-O-Rama, 7am-4pm indoors/outdoors at 4600 W. Lake St. Admission Adults \$3.00; Seniors \$2.00. (708)344-7300

MIDLAND, MI: Michigan Antique & Collectible Festival, Midland County Fairgrounds, 6905 Eastman Ave. Sat 8-6, Sun 9-4. 800 to 1000 quality dealers on 80 acres and in 7 buildings. Admission: \$10.00; children 11 & under free. 989-687-9001

****PRINCETON, WI:** 50th Anniversary Famous Princeton Flea Market! Tree-shaded city park, Hwy. 23/73 (S. Fulton St.). Open at 6am-1pm for vendors and customers. Free admission & parking. Food stand on site. www.princetonwi.com

ST. CHARLES, IL: Kane County Antique Flea Market, Kane County Fairgrounds at 525 S. Randall Road. Up to 400 dealers. Sat 12:00-5:00 pm.; Sun 7-4. Adm: Adults \$6.00; children under 12 free with adult. Free parking. www.kane-countyfleamarket.com. 630-377-2252; 630-708-8911

STEVENS POINT, WI: Flea Market at Antique Up, 3256 Church St. 9am-3pm. Food, vendors, sales & more. Free admission. 715-204-1604

TOMAHAWK, WI: Farm & Flea Market, Tomahawk's Qualheim's TrueValue parking lot. 79 Hometown Drive, just north of Tomahawk on the corner of Hwy A an A. 8am-2pm. Facebook: Tomahawk Farm & Flea Market

WAUKESHA, WI: Waukesha Farmer's Market, in downtown Waukesha, in the Waukesha State Bank employee parking lot. 8am to noon. Locally grown in-season produce and flowers, plus bakery canned goods and foods. Facebook: Waukesha Farmers' Market.

SUNDAY, JUNE 1

ADAMS, WI: 45th Season Adams Flea & Farm Market. 556 S. Main St., Hwy. 13-S, by the railroad tracks. Indoor/Outdoor. Farmer's market area. Free admission. 8:00am-4:00pm (608) 403-5283

ADAMS, WI: Polish Flea Market, 2151 State Hwy. 13. Open 8:00-11:00 am. Free Admission & parking. (608) 403-1133

ALSIP, IL: Tri-State Swap-O-Rama, 7am-4pm indoors/outdoors at 4350 West 129th St. Admission: adults \$3.00; seniors \$2.00. (708)344-7300

CALEDONIA, WI: 7 Mile Fair flea market. Indoor/Outdoor 9am-5pm. Admission: \$3 for 12 & up; \$1.00 Seniors. 2720 W. 7 Mile Rd. www.7milefair.com

CHICAGO, IL: Swap-O-Rama, 7am-4pm Indoors/Outdoors at 4200 S. Ashland Ave. Admission: adults \$3.00; seniors \$2.00 (708)344-7300

HUBERTUS, WI: Holy Hill Art Farm Art & Farm Market, 4958 Holy Hill Rd. (Hwy. 167), 2 miles east of Holy Hill Basilica. 9am-4pm. Admission: \$4. Unique Rustic Marketplace ~ Featuring Artists and Farmers with art, vintage & locally made and grown products. Food & beverages available. www.holyhillartfarm.com; 262-224-6153

****JEFFERSON, WI:** Jefferson Bargain Fair Flea Market & Craft Fair. Jefferson Speedway grounds, Hwy. 18; 6 miles W. of Jefferson. 6:30am-2pm. Free Admission. (920)648-6407 or 648-2705

MELROSE PARK, IL: Swap-O-Rama, 7am-4pm indoors/outdoors at 4600 W. Lake St. Admission Adults \$3.00; Seniors \$2.00. (708)344-7300

MIDLAND, MI: Michigan Antique & Collectible Festival, Midland County Fairgrounds, 6905 Eastman Ave. Sat 8-6, Sun 9-4. 800 to 1000 quality dealers on 80 acres and in 7 buildings. Admission: \$10.00; children 11 & under free. 989-687-9001

ROSEMONT, IL: Wolff's Flea Market, Allstate Arena, 6920 N. Mannheim. 6am-2pm. Admission: \$3; seniors & children 6-12, \$2. Early Bird before 6am is \$5. Check for updates on Facebook or www.wolffs.com.

ST. CHARLES, IL: Kane County Antique Flea Market, Kane County Fairgrounds at 525 S. Randall Road. Up to 400 dealers. Sat 12:00-5:00 pm.; Sun 7-4. Adm: Adults \$6.00; children under 12 free with adult. Free parking. www.kane-countyfleamarket.com. 630-377-2252; 630-708-8911

****SHAWANO, WI:** Shawano Flea Market, 55th year, featuring more than 150 vendors at the Shawano Co. Fairgrounds, 990 E. Green Bay St. Antiques, Collectibles, Crafts, Vintage, Mid Century Modern, Gardening, New & Old, Advertising, Old Toys, & More. 7:00am-4:00pm. Adm: \$2.00. Early buyers before 7am are \$10. (715) 526-9769. www.zurkopromotions.com

WILMOT, WI: Wilmot Flea Market, at the Kenosha County Fairgrounds, 30820 111th St. 7am-2pm. Admission: Adults \$2.00; Seniors & kids 6-14 \$1.00; kids 5 & under free. Free parking. (262) 716-5716; wilmotfleamarket.net

ANTIQUQUE SHOP DIRECTORY

All Shops/Malls Sell *Yesteryear* (unless marked with an *)

• ILLINOIS •

ANTIOCH

Wilnot Heritage Antiques & Gifts

One of the largest dealers of Fenton Art Glass in the Midwest. We specialize in old & new Fenton Glass. Also featuring Polish Pottery, new Aladdin Lamps, Mosser Glass, Carnival & Depression glass. 2 Storefronts: 400 & 402 Lake St. (Downtown). Open Tu, W, Th, Sat 11-5; Fri 1-5. (847) 838-6788.

BLUE ISLAND

Three Sisters Antique Mall*

60 Dealers - 2 Floors.
13042 S. Western Ave.
Blue Island, IL 60406
(708) 597-3331
Open 7 Days a Week 11:00 am-5:00 pm.

MARENGO

Bulldog Antiques

Not a mall...but a really great shop with "real" antiques. We take pride in showing pre-1970s Antiques and vintage collectibles...no Beanie Babies! Lots of signs, petroliana, cameras, neon, clocks, breweriana, tins, smalls. You won't be disappointed visiting Bulldog Antiques at 505 N. State St. Open weekends only: Friday, Saturday and Sunday 11:00 - 5:00, May-Oct. bulldogantiques.net

ST. CHARLES

Antique Market I

Since 1982, we have provided a variety of antiques and vintage finds including glassware, china, lighting fixtures, clocks, clothing, coins, jewel-ry, military, lamps, games, pottery, furniture, books, postcards and other paper items, posters, records, and much more. We are open every day from 10:00 to 5:00, 362 days each year. ANTIQUE MARKET I, 11 N. Third St., St. Charles, Illinois; (630) 377-1868; Website: AntiqueMarketOne.com; Facebook: Antique Market I.

STOCKTON

Antiques Etcetera*

A restored farm house filled with 10 rooms of Antiques and Collectables. A multi dealer store offering: Glassware, China, Pottery, Crockery, Jewelry, Books, Artwork, Primitives, Toys, Furniture, Tools, Buttons, Marbles, Lighting and many other items. Open 10:00-4:00 Wed-Mon. Located midway between Freeport and Galena Il. 841 E North Ave (Hwy 20 East) Stockton, Ill 61085 (815) 947-3173 PO Box 231

WOODSTOCK

Roscoe Woodstock Antique Mall

35,000 sq. ft. of QUALITY Antiques. Open 7 days a week 10-5. Specializing in early coin-op, slots, jukeboxes, Petroliana, advertising, and everything you could dream of finding in a "real" antique mall. Check us out on Facebook. (815) 334-8960. 890 Lake Ave., Woodstock, IL.

• INDIANA •

SHIPSHEWANA

Shipshewana Trading Place Auction & Flea Market

Midwest's Largest Outdoor Flea Market, Weekly Antique, Live-stock & Horse Auctions! The Shipshewana Flea Market is open Tuesdays & Wednesdays, May 3 through September 28, 2022 from 8am-4pm EST, plus special holiday and weekend markets. The Shipshewana Miscellaneous & Antique Auction is held every Wednesday, starting at 9:00 am in the Miscellaneous & Antique Building. Shipshewana Swap Meets are held on Select Saturdays. See our website for more: shipshewanatradingplace.com. Auctions and Flea Market Info: 260-768-4129. 345 S. Van Buren St., Shipshewana, IN.

• MINNESOTA •

CANNON FALLS

Country Side Antique Mall

55+ Dealers - 12,000 sq. ft. of Quality Antiques. 1161 4th St. So., Cannon Falls, midway between Rochester and the Twin Cities. Open Mon.-Sat. 9:30 to 5, Sun. 11 to 5:30. (507) 263-0352. We post weekly on Facebook - Follow us!



ROCHESTER

Old Rooster Antiques

15 Dealers of quality antiques and collectibles including china, glassware, pottery, tools, kitchen collectibles, primitives, military, jewelry, lighting and furniture, Doll Repair, lamp parts and repro hardware available. Furniture Basement Now Open! "Something for everyone from the novice to the seasoned collector." 106 N. Broadway, Rochester, MN 55906. 507-287-6228



• WISCONSIN •

APPLETON

Memories Antique Mall

OPEN DAILY 10-6! Over 15,000 square feet on one level. Located conveniently at the intersection of Highway 41 and Highway N in Little Chute. Our dedicated vendors consistently bring in new-found treasures, giving us a large selection! You can find Collectibles, Vintage Ephemera, Pop Culture Items and Antiques, all under one roof. Find us on Facebook, too! www.memorieslitttechute.com 920-788-5553 400 Randolph Drive, Appleton, WI, 54913

AUBURNDALE

Cider Mill Antiques

Established in 1973, we are a general line antiques shop. Located at 4594 County Hwy P (old US Hwy. 10), 3 miles E. of the village of Auburndale. Open daily, Tues-Sun 10-5; closed Mon. Many other area shops. Stop in to browse! cidermillantiqueshop.com; cidermillhwy10@hotmail.com; (715) 207-3511.

BARABOO

EYE OF THE BEHOLDER

Antiques, Curiosities, Art*

We are located 1/2 block off the square on Oak St. in beautiful downtown Baraboo Wisconsin. Stop in and check out our quality antiques, curiosities, local artisans' works, collectibles and many other unique and unusual items. We have something for everyone. See our Facebook page at Eye of the Beholder Baraboo for current hours or call (608) 356-3526. 610 1/2 Oak St. Baraboo WI.

BEAVER DAM

Beaver Dam Antique Mall

General line of antiques, including books, glassware, Depression, dolls, jewelry, cookie jars, quilts, stringholders and furniture in unique, three-level, wood floor & tin-ceilinged surroundings. 60+ Dealers; dealer inquiries welcome. 142 Front St. (Bus. 151 & Hwy. 33). Open 10-5 daily. Dark on holidays. (920) 887-1116.

BLANCHARDVILLE

Junk & Disorderly Antiques

Antiques, Vintage, Collectibles, Crafts, Military. 408 S. Main St. Call for hours. (608) 523-2433.

BRISTOL

Benson Corners Twin Antique Malls

On Hwy 50 (75th St.) just west of the intersection of Hwys. 45 & 50. Mall #1 is 7,000 sq. ft. Mall #2 is 11,000 sq. ft. Both are filled with antiques & collectibles with a total of 200-plus dealers. Open 7 days a week 10am-5pm. Look for the twin 25 ft x 15 ft American flags. Mall #1 (262) 857-2581; Mall #2 (262) 857-9456. Facebook: Benson Corners Antique Mall. Email: BensonCorners@gmail.com

DELAFIELD

Rickety Robin Antiques

General line of antiques, including furniture, glassware, jewelry, books and collectibles. (Other shops in the area, too!) 703 Milwaukee St. Open Daily 10am to 5pm, Sunday by chance; rrobinantq@wi.rr.com; (262) 646-8870; www.ricketyrobinantiques.com

DE PERE

Bosse's News Depot

Get your monthly copy of *Yesteryear* at Bosse's!
107 S. Broadway, (920) 432-8647.

EAU CLAIRE

Antique Emporium*

Midwest's largest selection of antique prints, bronze statuary, also books, pottery and glassware. 508 Water St. Open Fri.-Sat. 10:00am-5:00pm or by appointment. (715) 832-2494.



SHOP OWNERS:

For the Meager Sum of

➔ **ONLY \$1.00 PER WEEK** ➔

(\$52 per year), your shop will be listed in this **Directory for a Full Year!**

A 12-Month mailed subscription to *Yesteryear* is also included!

➔ **ON A LIMITED BUDGET?** ➔

ACT NOW to include your shop in our

EXTENSIVE & ECONOMICAL Antique Shop & Mall Guide!

Your listing also appears on our Website: www.yesteryearpublications.com

Our directory is used monthly by hundreds of serious collectors & dealers as they travel!

****OR, Ask about our \$90 Listing, which includes 10 copies of Yesteryear EACH MONTH that you can sell or give to your customers, as you like!**

ACT TODAY!

Contact Mary or Rich at Yesteryear:

608-297-7755; email: yesteryearantiques@frontier.com

ANTIQUQUE SHOP DIRECTORY

All Shops/Malls Sell Yesteryear (unless marked with an *)

GREEN BAY

American Antiques & Jewelry

Largest selection of Vintage Jewelry in Wisconsin. NEW LOCATION - 2545 W. Mason St. Green Bay, WI 54303 - DOUBLE THE SIZE! Visit our website: AAandJ.com. Open Mon. Wed., Thurs., Fri. 9:30am-5:30pm, Tues 9:30-7:00; Sat. 9:30am-4pm. (920) 498-0111.

Antique Mall of Greater Green Bay

Great variety! 50+ booths Great location - High visibility on I-41 frontage rd with 50k+ vehicles passing daily, just a few exits south of Lambeau Field. What we call 3 Venues - 1 location. Antique Mall featuring a wide variety of antiques, vintage and collectibles & more. Then visit the 250 ft walkway out back featuring 20 more vendors offering a wide display of great old stuff. It's fun too. Both open 7 days: Sunday and Monday 10 - 6; Tuesday thru Saturday 12 - 8 and often earlier. And now flea markets have returned to Green Bay the 2nd Saturday of the month 8 - 2 and are free this season to sellers and shoppers alike. Plenty of room for vendors of all sorts. All found at 1358 Mid Valley Dr., De Pere, WI. We are on the west side frontage rd of I-41. Coming up from the south, exit Scheuring Rd off Interstate 41, cross over the highway and take your first right. Coming down from the north, exit Main Ave off interstate 41 and continue straight ahead. You will be on Mid Valley Dr. Information 920-421-8833. E-mail anntiques@live.com. Follow us on Facebook: www.facebook.com/antiquemallofgreatergreenbay.

GREENLEAF

Wrightstown Antique Gallery*

Antiques, Victorian Furniture, Glassware, Clocks, Advertising, Lighting and Collectibles. 7142 Shanty Rd., Greenleaf, WI. Open Wed.-Thurs.-Fri. 11a.m.-5p.m., Sat/Sun. by appointment or chance, (920) 532-4308.

HUDSON

J&E Antiques*

Specializing in oak & Victorian furniture. 800 pieces in stock! Now in Hudson, Wisconsin. www.jeantiques.com. Call Lonny for appointments: (612) 961-3401; email: jeantiques@comcast.net.

KAUKAUNA

Look Back In Time*

Large selection of Antiques & Collectibles, including furniture, glassware, crocks and much more! 112 E. 2nd St. Open Tues.-Sat 10am-5pm, Sun 10am-3pm; closed Mon. (920) 759-1985.

LA CROSSE

Antique Center of LaCrosse

Over 70 booths covering 3 floors of antiques & collectibles. LaCrosse's oldest antique mall. Downtown-110 S. 3rd St. Open Mon.-Sat. 9 to 5:30, Sun. 11 to 5:30p.m.. (608) 782-6533. www.antiquecenteroflacrosse.com

Caledonia Street Antique Mall LLC

30+ Dealers featuring toys, furniture, glassware, beer items & signs, LP's, railroad items, also a nice selection of collectibles. 1215 Caledonia St. Open Mon.-Sat. 10 to 5, Sun. 11 to 4:30. (608) 782-8443.



MADISON

Antiques Mall of Madison

Antiques, primitives and collectibles by many prominent dealers. 18,000 sq. ft. of display space w/125+ dealers! 4748 Cottage Grove Rd. Open Every Day—Mon, Tues, Wed, & Fri 10-6, Thur 10-8, Sat 10-5, Sun 11-5. (608) 222-2049. A Show Every Day! www.antiquesmadison.com

Janet's Antiques

Fine 18th and 19th Century Furniture and Accessories, including Cut Glass and Fine China. 3800 University Ave. Open 11am-7pm, Monday-Saturday. (608) 238-3300.

MANITOWOC

MANITOWOC

Gritty Lane Antique Mall

Over 60 dealers with antiques, collectibles, crafts and curiosities. (Second Saturday Sidewalk Sale, 2nd Saturday in warmer months - outdoor flea market) 3310 Calumet Ave. in Manitowoc. Fri-Mon & Wed 11-6; Closed Tues/Thur. (920) 320-9232. Check "Gritty Lane" on Facebook for more info.

MILTON

Goodrich Antiques & Vintage Uniques*

Quaint Antique Shop located in Historic 1867 Italianate house. Consignments welcome - furniture, collectibles, vintage clothing & jewelry. 742 East Madison Ave. Open Fri-Sat 10-5; Sunday 12-5. (608) 868-3651. See us on Facebook.

MINOCQUA

Island City Antique Market*

Northern Wisconsin's Newest Antique Marketplace! We welcome you to visit our dealer's displays of fine antiques and collectibles. 8661 Hwy. 51-N, between Paul Bunyan's & McDonald's. Current OPEN Hours are Noon to 4 PM, Friday/Saturday/Sunday & Monday ONLY at this time. (715) 356-7003.

Monroe

Monroe Antique Mall

Three floors offering antiques, vintage & collectible items: primitives, glass, toys, coins & bills, books galore, lots of jewelry, fancy stones and stone jewelry, crocks, MCM clothing, handbags and hats...and the list goes on. Come see us any time. We participate in the twice-yearly, 400-shop SHOP HOP and the Wine Walk in the spring and fall. Standard Hours: Mon-Sat 10-4; Sundays 12-4, but often still open afterward and we can make appointments. We periodically purchase items, also. 1003 16th Ave. on the NW corner of the historic square (608) 328-8000. www.Facebook.com/MonroeAntiqueMall



SHOP OWNERS

I Advise You To Note:

For only \$1.00 per week (\$52 per year) your shop will be listed in this

Directory AND on our Website for a Full Year!

A 12-month mailed subscription to Yesteryear is included!

••• *Want More?* •••

For only \$90 per year, your shop will be

LISTED AS ABOVE, PLUS...

each month you will receive 10 copies of each issue! These are your

BEST ADVERTISING BUYS!

CONTACT US FOR COMPLETE DETAILS!

yesteryearantiques@frontier.com

608-297-7755

pdf form on our website at: antiqueswisconsin.com

OCONOMOWOC

Fox Lake Country Antiques

Over 100 Dealers and 16,000 sq. ft. on one level! Well-lit, wide aisles, wheelchair access., free parking. Bus tours welcome. Located downtown at 201 N. Fowler St. - Fowler St. & Hwy. 16 (Wisconsin Ave.). Open 7 Day A Week 10a.m.-5p.m. (262) 560-0890.

PARDEEVILLE

Pardeeville Wisconsin Antiques Mall*

One of Wisconsin's BEST antique malls! 10,000+ SF; two levels; 95+ quality dealers w/fabulous displays. Clean, cozy & comfortable w/unsurpassed variety...we just keep getting better! Ample parking. 30 mins. N. of Madison, 103 Industrial Dr. 10am-4pm 6 days/week, Closed Wednesdays. (608) 429-9393. Barb & Matt Kitson. pardeevilleantiques.com

PLYMOUTH

The Shoppes on Mill Street

Antiques, Collectibles, Coins, Toys, Vintage Clothing, Jewelry. 412 East Mill Street. Open Monday thru Saturday 10am to 5pm, Sundays 12noon to 5pm. (920) 892-8500, theshoppesonmillstreet.wordpress.com. E-mail: theshoppes@frontier.com

PORT WASHINGTON

Antiques at Gordon's

Est. in 1970, 5,000 sq. ft. store. Old fashioned shop filled with great antiques! Come see us! Call ahead during Winter weather. 2275 N. Port Washington Rd. Located on Hwy. 32, just South of Port Washington. Open 10-5 every day. (262) 377-4313.

PRINCETON

See Our Display Ads on Page 24!

Woolbright's River City Antique Mall, Inc.

Multi-dealer Antique Mall, specializing in high-end antique furniture. Located just across the street from the Princeton Flea Market/City Park, 328 S. Fulton St. (Hwy. 23/73). Open 7 days 10-5; 7:30am on Flea Market Saturdays. (920) 295-3475.

MNM Antique Mall

Directly across the street from Princeton Flea Market/City Park in large building dedicated to antiques & collectibles. 501-A S. Fulton St. Open 7 Days a Week. 10am - 4:30pm. (920) 295-0176; www.MNMAntiqueMall.com.

SCANDINAVIA

Trading Company Antiques*

Welcome. Here at Trading Company Antiques you can find many quality antiques, vintage and collectible items as well as fishing, automotive, hunting, stoneware, military, jewelry, lanterns, decoys, crocks, railroad items, farming items, autographs and sports cards/memorabilia. We are located on Hwy 49 between Iola and Scandinavia, WI. We are open Friday and Saturday from 10:30-5:00 and Sunday from 10:30-4:00. (920) 450-6043

SHAWANO

Bottle House Antiques*

40+ Dealers featuring collectibles, antiques, vintage & repurposed. All booths on one level with easy accessibility. LOVE THE HUNT, ENJOY THE FIND! 701 S. Main St. in Shawano. Open Tuesday thru Sunday 10-5; Monday 1-5. (715) 853-8722

STEVENS POINT

Call It New/Call It Antique*

60+ dealers quality antiques & collectibles combine with our consignment & resale center to entertain your entire family! Enjoy browsing 3 levels at this unique destination. Ice cream shop & restaurants nearby. Downtown square, overlooking the Wis. River. 823 Main St., Tues-Sat 10-5; Sun 11-4; Closed Mondays. FB: Call it New/Call it Antique; email: CallitNewCallitAntique1@gmail.com

THREE LAKES

The Winds of Time

Located at 1690 Superior St./Hwy. 45 in downtown Three Lake, WI. Antiques, Collectibles, Art and General Line of Antiques - Prints, Glass, Elegant Glassware, Uranium Glass, Clothing, Iron Collectibles, Lamps, Furniture, Paintings, Lighting, Pottery, Paper Items, Clocks, Victorian, Mid-Century Modern - and more to come! Open Fri-Sat 10:00-4:00; Sunday 10:00-2:00; or by chance or appointment. Call (715) 617-4310.

TOMAH

Antique Mall of Tomah

68 dealers of Quality Antiques & Furniture at affordable prices, for beginner or advanced collector. 1510 Eaton Ave, easy on/off I-90/94 (#143/Hwy. 21-E. off I-94). Open 7 Days a Week. (608) 372-7853. Dealers Welcome! email: info@antiquemalloftomah.com

TOMAHAWK

The Old Towne Mall*

15+ UNIQUE ANTIQUE VENDORS, as well as vinyl records, vintage clothing, MCM, greeting cards, gourmet foods & candy, candles, comics, jewelry, toys and more items added every day! 206 W. Wisconsin Ave., Downtown Tomahawk. Open M-F 10-5, Sat 10-3, Sun 10-2. Find us on Facebook!

WATERTOWN

Clara's Antiques

Two stories of merchandise displayed by over 100+ vendors, located in the historic Merchants Bank building. Estate Sale Services available. Consignments welcome. Vendor space & locked showcases available. 100 E. Main St. Open Tues-Sat 10-5. (920) 262-2007.

WAUKESHA

Come to Historical Brookdale Village

Browse thru Farm Museum & 8,000 sq.ft. Shop with a lot of Big Sales & 50-75% off. Hwy. 59 W. of Waukesha, to Brookhill Rd. (just before Hwy. 83), N. on Brookhill Rd. to W305 S4095 Brookhill Rd. Fri.-Sun. 10-4; April-Oct., winter by appt. (262) 391-4663-shop; (262) 968-4015-office.

Waukesha Antique Mall

Now featuring over 10,000 square feet of shopping. We offer over 84 unique and quality dealers. You're certain to find that special treasure, perfect gift, or a welcome addition to your home. 1427 E. Racine Ave. Open 10am-5pm every day. (Closed Christmas, Thanksgiving & Easter) (262) 524-0600. Please Like us on Facebook.

WEST SALEM

Historic Salem

Now Reopening shop in historic home built in 1859 after being closed for several years. Furniture, collectables, newspapers, records, comic books, magazines, glassware, pictures, paintings, Presidential pictures, political pins and posters, stamps and over 1,800 used books (by subject and author). Historic Salem, 99 East Jefferson Street, just off I-90. Open Monday-Saturday 1:00-5:00 pm. Phone (608) 518-8566.



MARKETPLACE

It's Time To Clean Out That Attic! Sell those hidden treasures through the **YESTERYEAR MARKETPLACE!**



HAVE SOMETHING TO BUY-SELL-TRADE?

Low Classified Ad Rates - 20¢ per word!
(\$4.00 minimum charge)

Bold Face Type add \$1.00 per month.
All Classified Ads Must Be Prepaid.

Type or clearly print your ad and submit with payment to:
Yesteryear, PO Box 306, Montello, WI 53949





Smack Dab in the Middle: Design Trends of the Mid-20th Century

By Donald-Brian Johnson



This month: "Food For Thought: Feed Sack Art"

Beaming bakers. Knights in armor. Singing chickens, a solemn Sphinx, and even a corn cob or two, outfitted with airplane wings.

What gives? Well, one and all are examples of "feed sack art." Those colorful logos on cotton feed sacks provided a healthy dose of Americana from just before the turn of the 20th century well into the 1950s.

Cloth feed sacks were the mid-1800s successors to the wooden barrels that had previously handled storage chores. Industrial sewing machines now made it possible to sew reliable seams. Although dubbed "feed sacks," the bags were put to work carrying plenty besides animal feed. Among the contents: seeds, flour, sugar, tobacco, bath salts, corn meal, and even ammunition. While early bags were often burlap or jute, by the 1890s cotton was king. Cotton bags were more pliable, cheaper to produce, and reusable.

Actually "repurpose-able" is a better description. No homemaker intended to refill her empty Blue Feather Potatoes bag with more potatoes. But with a good washing, and by picking out those sturdy seams, there were plenty of other uses for that good cotton--and there was plenty to use. The standard 100-lb. feed sack, when laid flat, measured approximately 37" by 43". With enough bags, there was soon more than enough material on hand to sew up a wide variety of household necessities, from dish towels and bedsheets, to new curtains and quilt backings.

Just about the only thing early white cotton bags were less than desirable for: clothing. Initially, the logos and product information inked on the bags was there to stay. The only hope for removal: dousing them with bleach, or other "sure-fire" home remedies, before engaging in some vigorous scrubbing. If that didn't do the trick, printed info was sometimes left as is. After

all, who would see it? Only the disgruntled little girl heading off to school, knowing that her new set of drawers had "100 lbs. net weight" plastered across the posterior. (Patterned feed bags, which came into vogue for clothing use in the 1920s, solved the problem. Their labels and logos were either water-soluble ink, or on easily removable tags. This led to a surge in dresses, play clothes, aprons, and other types of feed sack clothing, during the Depression and World War II years.)

By the early 1940s, over 30 companies were churning out feed sacks nationwide. There was an ongoing effort to come up with distinctive, uniquely-themed logos, sure to drum up buyer interest. This explains the warbling poultry and flying corncocks on some bags, which vied for attention with more traditional illustrations of farms and countrysides.

For today's collectors, accumulating feed sacks requires pre-planning. As noted, they're huge. Unless you have plenty of room to hang them (say, in an empty barn), much of your collection could remain unseen. But if it's just the feed sack logo you're interested in, an attractive and workable alternative is to frame and display just the logo portion. As for the remainder of the bag, there's no need to try stuffing it into the frame, or cutting it up to get at the logo. (As feed sack prices can range from \$10-50, depending on condition, put away those scissors!) The answer to the dilemma is as close as your camera or phone. Just photograph the logos, then print them for display. This allows for size adjustment of the image to fit the frame. It also offers the option of touching up any undesired deterioration. The result: an eye-catching display, true to the source, but with the original feed sacks remaining intact.

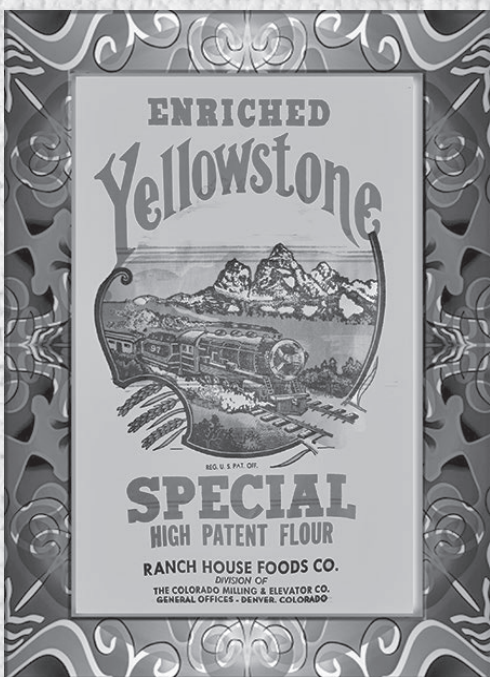
With the introduction of equally sturdy, yet much less expensive paper and burlap bags in the 1950s, the use of cotton feed sacks declined. Their logos, however, continue to hold a nostalgic appeal for today's collectors. They hearken back to a simpler, more peaceful time. A time when chickens could sing, and corncocks could fly.

Original feed sack photos courtesy of Shari Aken.
Photo Associate: Hank Kublmann

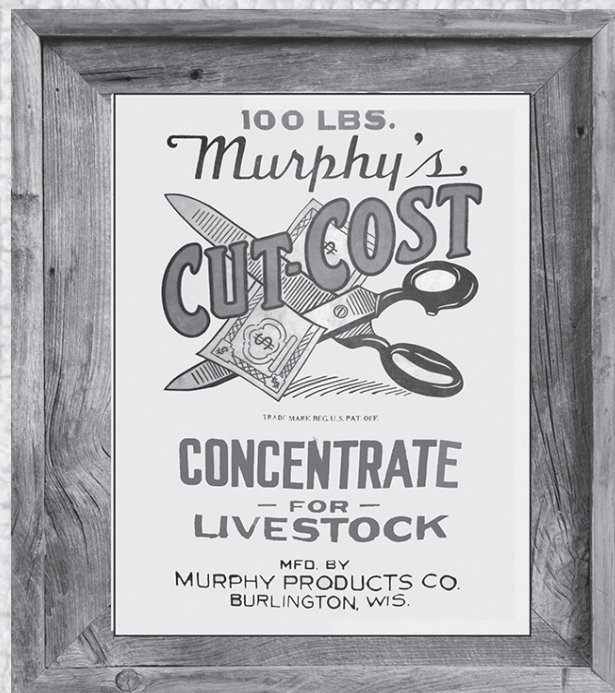
Donald-Brian Johnson is the co-author of numerous books on design and collectibles, including "Postwar Pop," a collection of his columns. Please address inquiries to: donaldbrian@msn.com



Keeping its secrets: "Sphinx Brand Meat Salt," The Barton Salt Co., Hutchinson, KS.



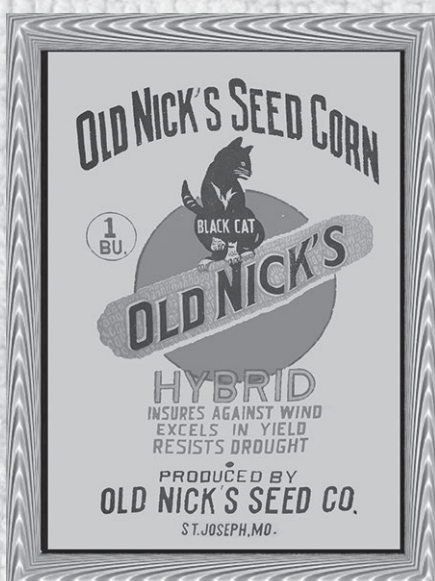
"I hear the train a-comin'." Locomotive logo for "Yellowstone Flour" from Ranch House Food, a division of the Colorado Milling & Elevator Co., Denver, CO.



Taking a scissors to high prices: "Murphy's Cut-Cost Concentrate For Livestock," Murphy Product Co., Burlington, WI.



Hear ye, hear ye! "Town Crier Flour," Mill 7 Flour Co., Kansas City, KS.



(At Left) A black cat perched on a corncob? That's the logo art for "Old Nick's Seed Corn," from the company of the same name, St. Joseph, MO.



(At Left) A Native American, featured in the logo for "Big Chief Flour," Elgin Mills, Elgin, NE.



(At Right) Spelling it out: "Malone's I-O-W-A Seeds," Malone Seed Co., Atlantic, IA.



"Green Acres is the place to be!" A restful farm scene, courtesy of Green Acres Hybrids, Hartington, NE.



A happy baker highlights the "Primo Flour" logo, Franklin County Grain Growers Inc., Preston, ID.



A knight in shining armor, riding high on this "Thrifty" Aller & Pease logo.



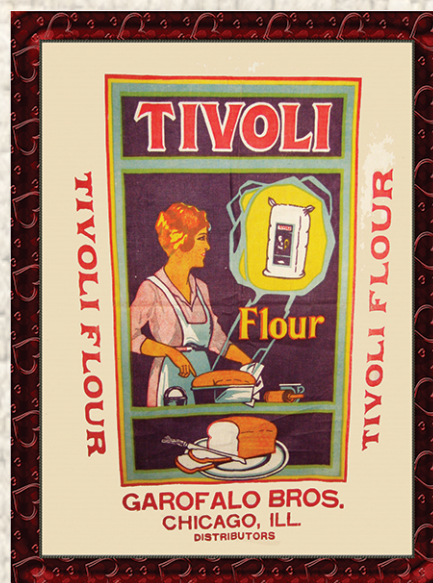
A bushel of "Tekseed" corn promotes Tekseed Hybrid Co., Tekamah, NE.



A complete feed sack. This one's just 50 lbs., and still measures 15" x 30." Hybrid Sorghum, Aller & Pease, Inc., Beatrice, NE.



It must be wonderful! "Omaha Wonder Flour," Omar Mills, Omaha, NE.



She's busy with her baking, thanks to "Tivoli Flour," Garofolo Bros., Chicago, IL.



And they're on the air! Chicken duo sings the praises of "Lewis Quality Laying and Growing Mash," Lincoln, NE.



One of several companies to use an ear of corn with airplane wings in its logo: Farmers Hybrid Co., Hampton, IA.



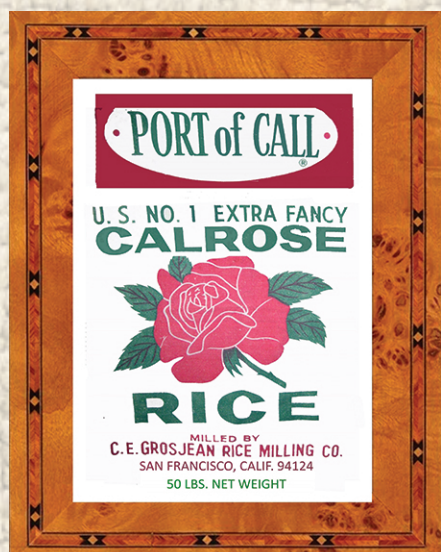
A sword-wielding eagle takes flight on the logo for "Victor Corn Meal," Crete Mill. Co., Crete, NE.



Right on target: "Archer Hen Scratch," Archer-Daniels-Midland Co., Minneapolis, MN.



Purple mountains' majesty: "Wasatch Flour," Salt Lake Flour Mills, Salt Lake City, UT.



The product name evidently prompted the logo art: "Calrose Rice," C.E. Grosjean Rice Milling Co., San Francisco, CA.



Ring out the news: "Golden Bell Rye Flour," Zwonechek & Aksamit Milling Co., Wilber & DeWitt, NE.



Airplanes coming and going? The must have specialized in speedy delivery. Jochum Seed Company, Elgin, NE.



Fit for a king: "King of Gold Wheat Flour," Peavy Company, Minneapolis, MN.

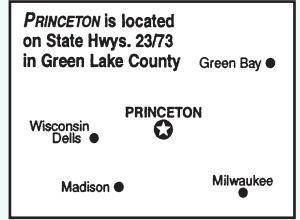


"Blue Feather Potatoes," Howard McLean Co., Scottsbluff, NE.



The smiling farmer is evidently pleased with his purchase from Miller Seed Co., York, NE.

For A Delightful Antiquing Experience Discover Princeton



• MID-WISCONSIN'S ANTIQUE CENTER •

Visit Dozens of Antique and Unique Shops in the Historic Downtown Water Street Area,
All Around Town, and the Surrounding Countryside!

Princeton Area Chamber of Commerce, PO Box 45, Princeton, WI 54968

920-295-3877 • www.princetonwi.com • email: chamber@princetonwi.com • Facebook: Princeton WI Chamber of Commerce

328 S. Fulton St. (Hwy. 23/73 South) PRINCETON, WI 54968
OPEN 7 DAYS A WEEK All Year Long - 10am-5pm
Open Early Flea Market Saturdays at 7:30am! Market is across the street.
 Layaway/Delivery Available • (Closed Thanksgiving, Christmas, NY Day & Easter)

920-295-3475 • www.rivercityantiquemall.com
SHOP ONLINE 24/7!!

Large Egg-Shaped Chocolate Mold
Dealer PUP-49 \$69

Celebrate Easter with this adorable Vintage Chain Easter Bunny pulling a Basket!
Dealer RBR-647 \$79

A real conversation piece!
A Vintage TV Lamp
Dealer LML \$51

A bright addition to your wall - Hand-painted Hanging Plant Pocket
Dealer TLS-2531 \$28

Musical Bunny with Box
Dealer WAM \$30

Look at this great Stoneware Jar "Grand Vin de Provence"
Dealer Johnny Crow's \$85

(Left) Hippy-Hoppity, it's a Bunny Rabbit Cookie Jar! Stamped "Japan"
Dealer LL \$58

(Right) 1800s Walnut Chest of Drawers - 7 Drawers with Wood Knobs
Dealer Cof-2596 \$495

A cute Plastic Knickerbocker Bunny Rattle!
Dealer WAM \$18.95

MNM Antique Mall
 501-A S. Fulton St.
920-295-0176
 Come visit us...located next to the Princeton Flea Market/City Park
Recycle... Buy An Antique!
 Open 7 Days a Week:
 January-April 10:00-4:30
 May-December 10:00-5:00
 MNMAntiqueMall@centurylink.net
www.MNMAntiqueMall.com
 Find us on Facebook

Looking for a piece for your collection? Need a gift? Up late and can't sleep? No matter what your reason or what the season, you can now shop at River City Antique Mall

WHENEVER YOU WANT!!
 Introducing **ONLINE SHOPPING 24/7!!**
 Just go to:
www.rivercityantiquemall.com
 and explore our virtual shelves!

THE PRINCETON FLEA MARKET
Saturdays: April 19-Oct 11, 2025
50th Anniversary!

You never know what you'll find...from antiques to honey; fresh vegetables and other garden delights to freshly-baked bread; creative crafts to cheese curds; T-shirts to spices; jewelry and gemstones to a "gem" of a find for your collection; toys, nuts, tools, trinkets, books galore, plants....and so much more!

Admission and parking are free and there is an abundance of great things to eat. Local service groups and organizations serve snacks, sandwiches and beverages from the historic food stand in center of the Park.

50TH ANNIVERSARY!
 • EVERY SATURDAY •
2025 SEASON: APRIL 19 - OCTOBER 11

LARGEST MARKET IN CENTRAL WISCONSIN!

On State Hwy. 23/73
 35 miles west of US 41 - or - 20 miles east of US 51/I-39

FLEA MARKET • PRINCETON CITY PARK
One Shady Square Block right on Hwy. 23/73
FREE ADMISSION & PARKING!
GOOD FOOD & REFRESHMENTS!
 ---- COME EARLY ----
6AM TO 1PM • 170 VENDOR SPACES

Limited Dealer spaces Available Every Saturday • No Weekly Reservations--Daily spaces sold in park at 6:30am • Open 6am
For Exhibitor information, call 920-295-3877 or visit: www.princetonwi.com